

CLEARFIL MAJESTY™ FLOW

Right consistency for controlled application:
not sticky, not runny



NANO DISPERSION TECHNOLOGY

CLEARFIL MAJESTY™ Flow is a flowable, superfilled, light-curing, radiopaque restorative composite resin with the filler particles treated with a proprietary Nano Dispersion Technology. The resulting resin matrix which consists of monomers, nano fillers and micro fillers is reinforced with a high filler load of 81 wt% (62 vol%). Not only the strength of the material – but also the handling properties are convincing.



HIGHLY FILLED FLOW AND CONVINCING PROPERTIES

CLEARFIL MAJESTY™ FLOW – NOT RUNNY, NOT STICKY!

The right consistency is essential for the efficacy of a flowable composite. CLEARFIL MAJESTY™ Flow meets this demand sufficiently.



CLEARFIL MAJESTY™ Flow is not sticky.
When you extrude the material, it will not stick to the needle.



Other flowable composites have a sticky consistency so that the material will not be released easily from the needle.

ERGONOMIC SYRINGE

With its material benefits and the ergonomic and comfortable syringe, it truly satisfies the dentist's needs for materials that are easy to handle.

The extra wide holder offers a good grip for easy and comfortable application.

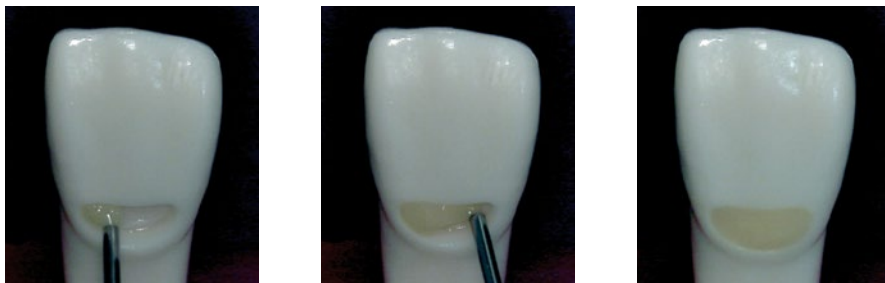
The needle tip opening is smaller than that of competitive products. Due to a new technical detail, voids in the material are basically eliminated.



DIFFICULT IN PRACTICE: CLASS V CAVITIES

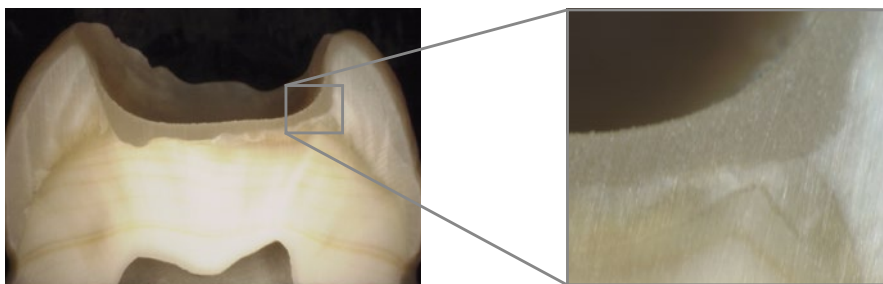
NO PROBLEM WITH CLEARFIL MAJESTY™ FLOW

The filling test on a class V cavity model shows, that CLEARFIL MAJESTY™ Flow will not slump out of the cavity. It will remain in the right position without running out of it.



OUTSTANDING LINING OF THE CAVITY

The image of the cross section of a cavity covered with one layer of CLEARFIL MAJESTY™ Flow shows this very well: Due to its flexible consistency, it is able to reach every area of the cavity and blend well with the natural tooth structure.



CONVINCING SCIENTIFIC RESULTS

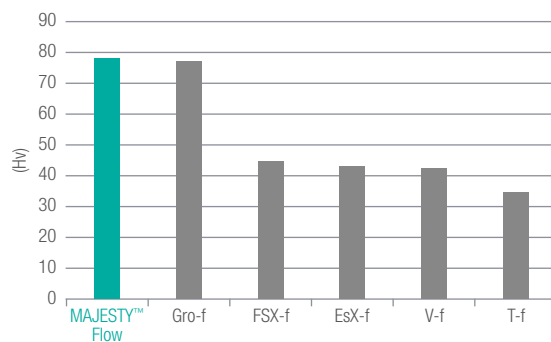
FLEXURAL STRENGTH



Source: Kuraray Medical Inc., Japan

CLEARFIL MAJESTYTM Flow displays the highest flexural strength in comparison to other flowable composites.

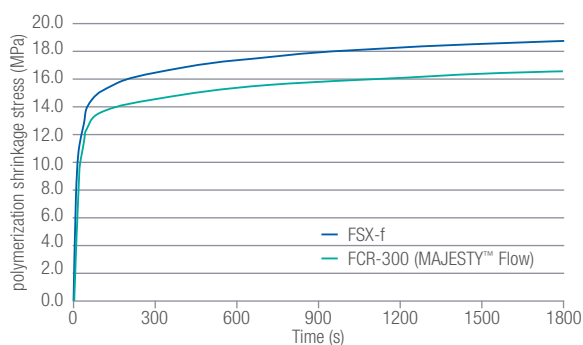
VICKERS HARDNESS



Source: Kuraray Medical Inc., JapanMajesty

CLEARFIL MAJESTYTM Flow also has the highest Vickers hardness in comparison to other flowable composites.

VOLUMETRIC POLYMERIZATION SHRINKAGE

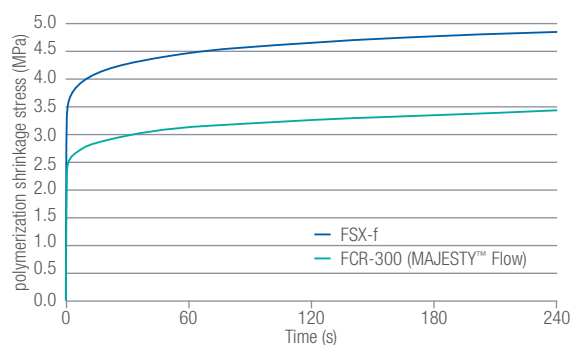


Polymerization shrinkage measured for a period of 4 hours. The Elipar Highlight was used in standard mode to light cure the materials for 40 s.

Source: Dr. de Gee, ACTA, The Netherlands

CLEARFIL MAJESTYTM Flow has a lower polymerization shrinkage than the competitive product (FSX-f).

SHRINKAGE STRESS



Polymerization shrinkage stress development (MPa) of the investigated materials (n = 5) during 30 minutes of setting after the start of light curing with the Elipar Highlight.

Source: Dr. de Gee, ACTA, The Netherlands

CLEARFIL MAJESTYTM Flow's shrinkage stress is also lower than that of the competitive product (FSX-f). This demonstrates a favorable marginal adaptation to the tooth substance.

CLEARFIL MAJESTY™ FLOW IN PRACTICE

The cervical caries was removed and restored using CLEARFIL MAJESTY™ Flow, shade Cv.



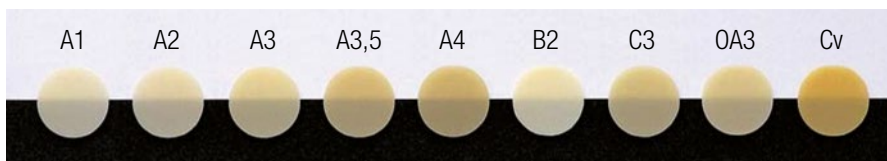
Before (Class V cavity)



After

AVAILABLE IN 9 AESTHETIC SHADES

CLEARFIL MAJESTY™ Flow is available in 9 esthetic shades. Simply choose one single matching shade for the whole restoration.



ORDERING INFORMATION

- #2610-EU CLEARFIL MAJESTY™ Flow: syringe A1 (3.2 g/1.5 ml)
- #2611-EU CLEARFIL MAJESTY™ Flow: syringe A2 (3.2 g/1.5 ml)
- #2612-EU CLEARFIL MAJESTY™ Flow: syringe A3 (3.2 g/1.5 ml)
- #2613-EU CLEARFIL MAJESTY™ Flow: syringe A3.5 (3.2 g/1.5 ml)
- #2614-EU CLEARFIL MAJESTY™ Flow: syringe A4 (3.2 g/1.5 ml)
- #2616-EU CLEARFIL MAJESTY™ Flow: syringe B2 (3.2 g/1.5 ml)
- #2618-EU CLEARFIL MAJESTY™ Flow: syringe C3 (3.2 g/1.5 ml)
- #2621-EU CLEARFIL MAJESTY™ Flow: syringe Cv (Cervical) (3.2 g/1.5 ml)
- #2632-EU CLEARFIL MAJESTY™ Flow: syringe OA3 (3.2 g/1.5 ml)

#2602-EU CLEARFIL MAJESTY™ Flow shade guide

#1015-EU Needle tips: 20 tips



YOUR CONTACT

Kuraray Europe GmbH

BU Medical Products

Philipp-Reis-Strasse 4

65795 Hattersheim am Main

Germany

Website www.kuraraynoritake.eu

Phone +49 (0)69 305 35 835

E-Mail centralmarketing@kuraray.com

- Before using this product, be sure to read the Instructions for Use supplied with the product.
- The specifications and appearance of the product are subject to change without notice.
- Printed color can be slightly different from actual color.

"CLEARFIL" is a trademark of KURARAY CO., LTD.



Kuraray Noritake Dental Inc.

1621 Sakazu, Kurashiki, Okayama 710-0801, Japan
Website www.kuraraynoritake.com



04/2021/MKA00643