



PRODUCT CATALOG LABSIDE

SHAPING THE FUTURE OF AESTHETICS



Kuraray Noritake Dental Inc.

A century of serving mankind.



CLOSE TO YOUR NEEDS THROUGHOUT EUROPE



Symposia, Technical Trainings, manuals, IFUs, How-To-Use videos, color selection solutions, specialized appointed trainers throughout the European continent, a rich and vast academic network, papers originated from research in vitro and in vivo.

SHAPING THE FUTURE OF AESTHETICS



- Innovator of next generation dental products
- Inventor of adhesive monomer MDP
- Adhesive first-rate standard: CLEARFIL™ and PANAVIA™
- Inventor of KATANA™ Multi-Layered zirconia

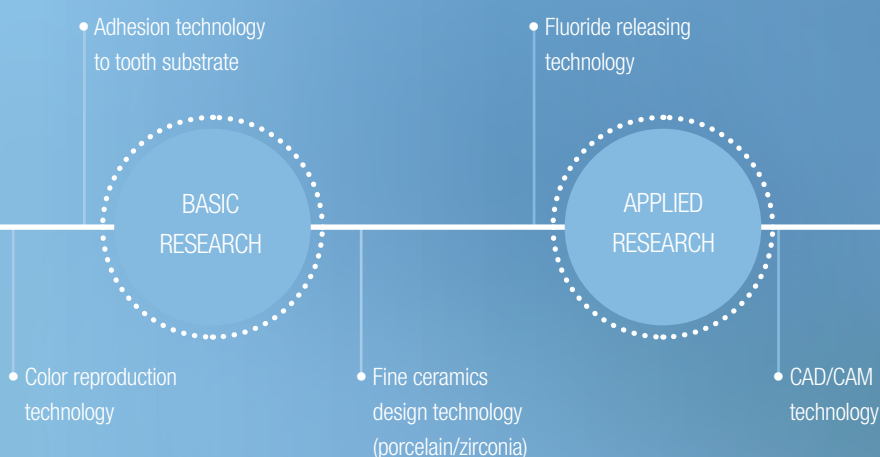
RESEARCH & DEVELOPMENT

Dental Innovation track record of 40 years.

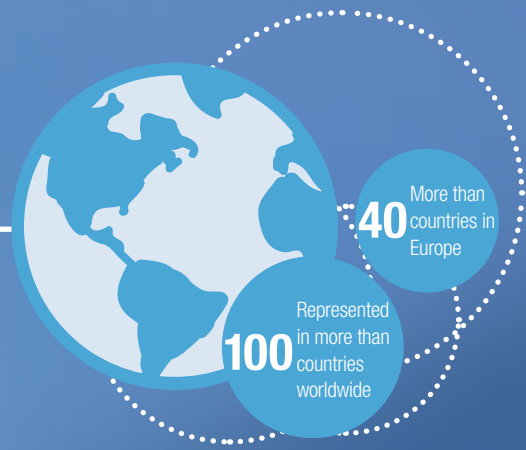
KURARAY

NORITAKE

Dental Inc.



- Kuraray Noritake Dental Inc. is an affiliate of KURARAY CO., LTD. developing dental materials
- The business unit develops dental & medical materials
- 4 strategic bases covering Europe, America and China.
- 1 HQ in Japan



COMPLIMENTARY PRODUCT FAMILIES THAT RESTORE TEETH TO A NEAR NATURAL STATE



CHAIRSIDE

- Bonding: CLEARFIL™
- Cement: PANAVIA™
- Composite Resin: CLEARFIL MAJESTY™

LABSIDE

- Porcelain: CERABIEN™ ZR (CZR)
- Noritake Super Porcelain EX-3
- Zirconia: KATANA™



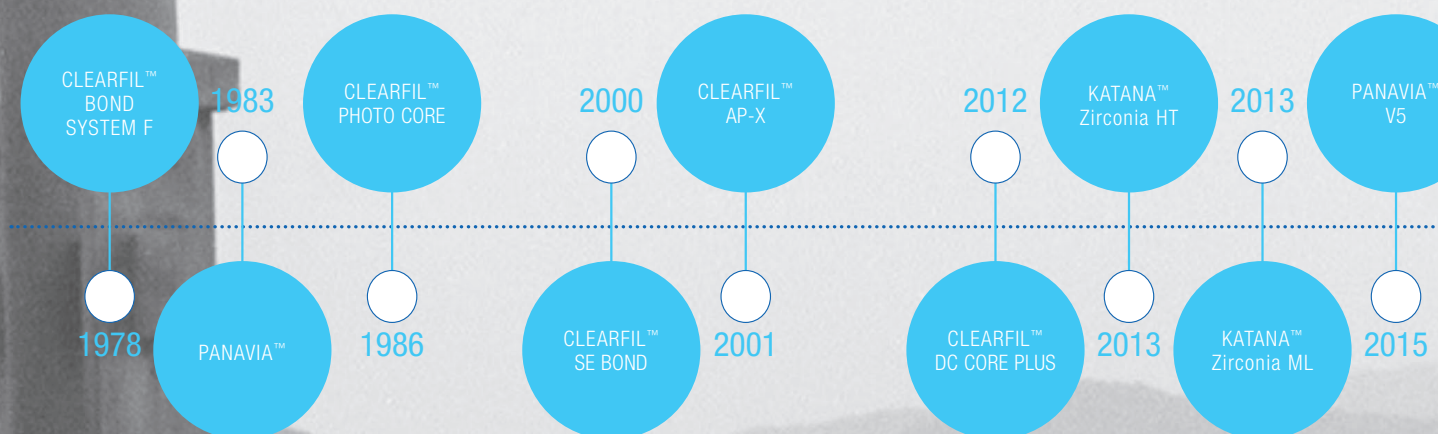
- Surface treatment technology for fine filler
- Dispersion and mixing technology of fine filler
- CAD/CAM advancement
- Non-metal alternative materials
- Fine ceramics production technology
- Easy-to-use powder production technology

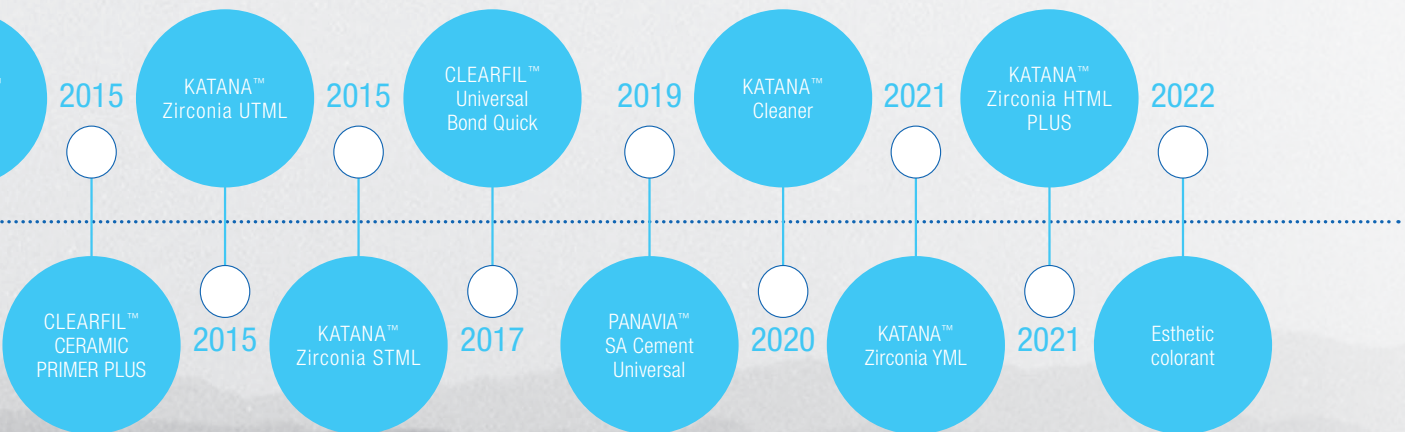
Kuraray Noritake Dental Inc.

On a mission to create less complex dental procedures delivering natural beauty and lasting results.

MILESTONES IN DENTISTRY

The great achievements that changed dentistry in the past 40 years all started within Kuraray and Noritake, Japan.







kuraray

RESEARCH & DEVELOPMENT

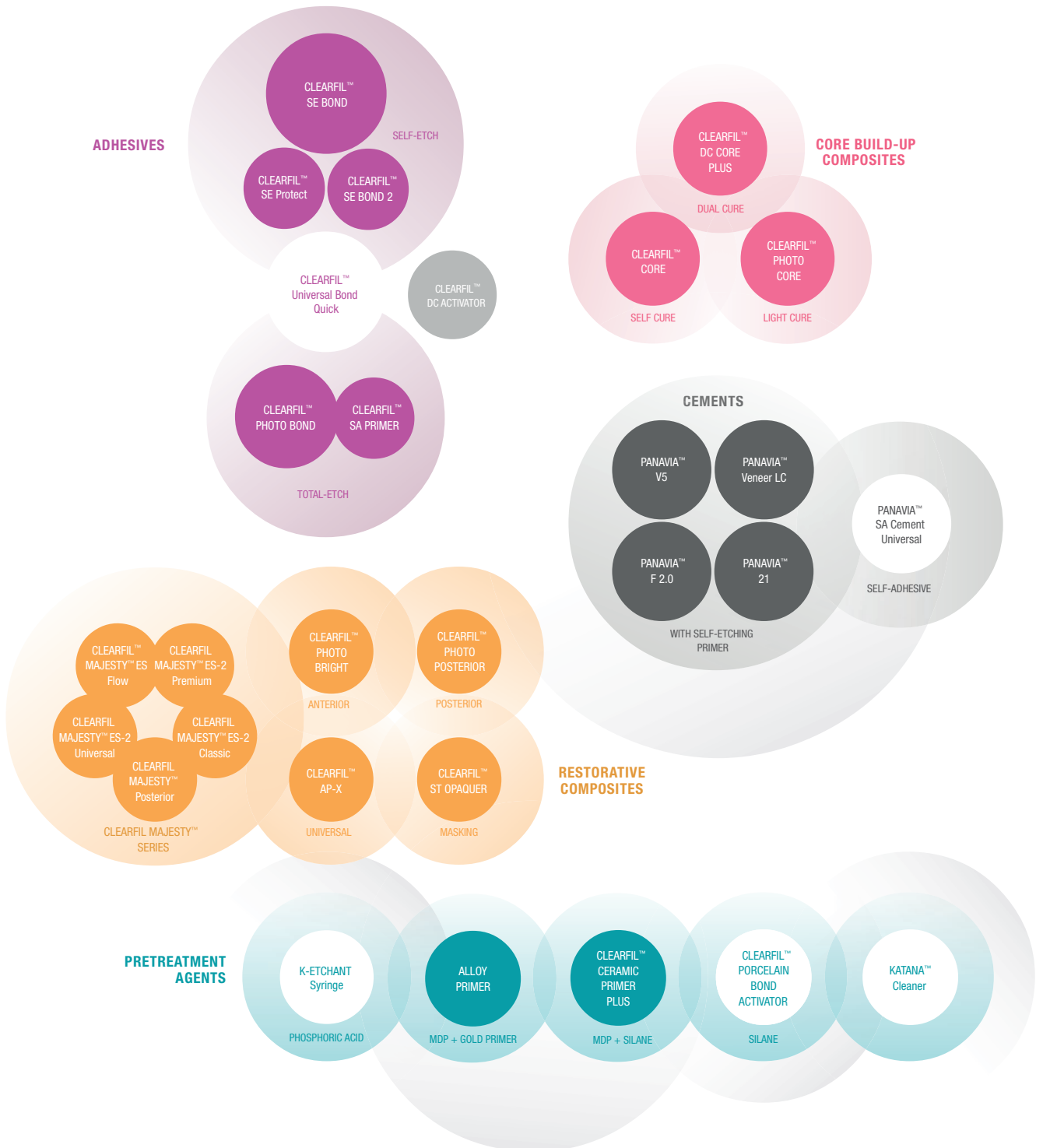
Kuraray began to develop dental products in the 1970s. Today we are recognized as an innovator in the research and development of dental products that simplify everyday dental procedures while delivering first-class, lasting results.

MDP

Back in 1981 we invented MDP, the adhesive monomer which achieves a durable bonding with enamel, dentin, metal and metal oxides.

EVIDENCE-BASED

All our product developments are based on empirical support. And we try to go further, classifying evidence by only the strongest proof coming from clinical cases, practice based research and randomized controlled trials.



HIGH TECH

Kuraray Inc., our mother, develops highly innovative products for many more fields of business besides dentistry. The portfolio ranges from synthetic plastics to fine chemicals and technology used for high-tech processes and finishing.

CRAFTMANSHIP

Kuraray Noritake ensures that the many global dental talents can be consistent in their work by delivering a high standard of quality for our full product range.

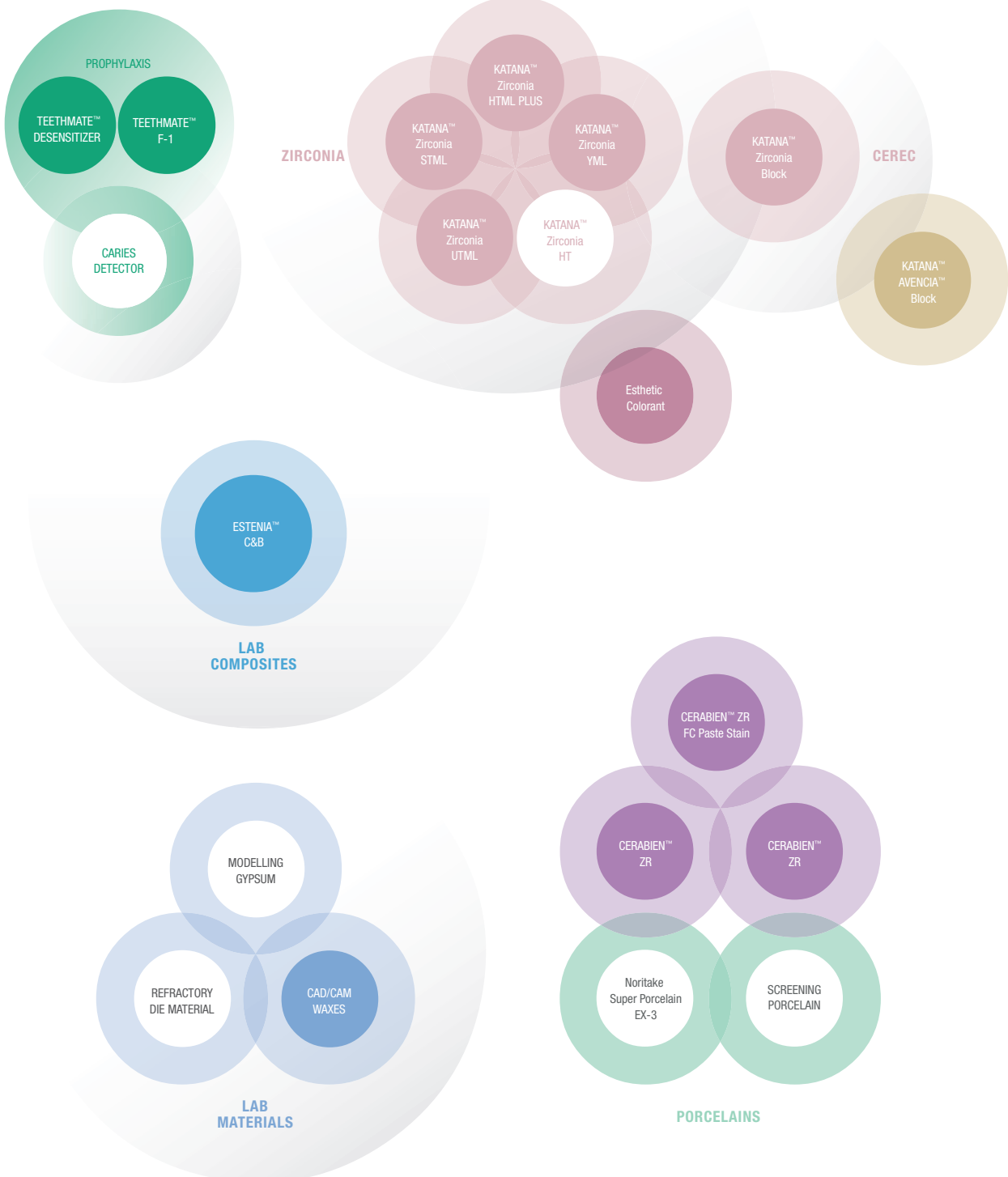


TABLE OF CONTENTS

KATANA™ Zirconia

| | |
|---|-----------|
| KATANA™ Zirconia YML | 15 |
| Multi-Layered Zirconia with High Translucency – Perfect for Veneers and Anterior Prosthetics | |
| KATANA™ Zirconia UTML | 15 |
| Multi-Layered Zirconia with High Translucency – Perfect for Veneers and Anterior Prosthetics | |
| KATANA™ Zirconia STML | 15 |
| Zirconia with Color and Translucency Gradient – Perfect for Full Contour Prosthetics | |
| KATANA™ Zirconia HTML PLUS | 16 |
| Multi-Layered Colors for Fast and Natural Restorations | |
| KATANA™ Zirconia HT | 16 |
| Monochrome High-Performance Zirconia | |
| KATANA™ Zirconia | 16 |
| Zirconia Disc for Crowns, Bridges and Frames with Unique, Higher Opacity | |
| KATANA™ WAX | 17 |
| Suitable for Casting Metal and Pressing Ceramic Ingots | |
| PANAVIA™ V5 STANDARD KIT | 17 |
| The newest generation of PANAVIA™ | |
| Esthetic Colorant | 20 |
| Developed for “KATANA™ Zirconia” | |

CERABIEN™ ZR (CZR)

| | |
|--|-----------|
| CZR FC PASTE STAIN | 25 |
| The Addition of a New Paste-type Surface Stain | |
| CZR BASIC FULL KIT (63 COLORS) | 27 |
| Full Kit with Shade Base | |
| CZR SS BASIC FULL KIT (63 COLORS) | 27 |
| Full Kit with CZR PRESS Shade Base Stain | |
| CZR MARGIN KIT (19 COLORS) | 27 |
| Margin Porcelain Assortment | |
| CZR ENAMEL/TRANSLUCENT COMPLETE KIT (14 COLORS) | 27 |
| All Shades of CZR Enamel, Translucent and CCV | |
| CZR LUSTER CCV KIT (16 COLORS) | 27 |
| All Luster & CCV Shades including Aqua Blue & Super Gray | |
| CZR LUSTER COMPLETE KIT (19 COLORS) | 27 |
| All Shades of CZR Luster | |
| CZR OPACIOUS BODY COMPLETE KIT (20 COLORS) | 27 |
| Opacious Body Assortment | |
| CZR EXTERNAL STAIN (ES) KIT (22 COLORS) | 27 |
| Complete Assortment of External Stain | |
| CZR INTERNAL STAIN (IS) COMPLETE KIT (19 COLORS) | 28 |
| Complete Assortment of Internal Stain including Fluoro | |
| CZR ESTHETIC WHITE KIT (11 COLORS) | 28 |
| Assortment of Noritake Esthetic White (EW) Shades with Shade Base | |
| CZR SS ESTHETIC WHITE KIT (11 COLORS) | 28 |
| Assortment of Noritake Esthetic White Shades with CZR PRESS Shade Base Stain | |
| CZR TISSUE KIT (7 COLORS) | 28 |
| Assortment of 7 Gingival Colors | |
| CZR VALUE SHADE FULL KIT (55 COLORS) | 28 |
| Value Shades including CZR PRESS Shade Base Stain | |
| CZR VALUE SHADE BODY KIT (26 COLORS) | 28 |
| All 26 Shades of Value Shade Body Assortment | |
| CZR VALUE SHADE OPACIOUS BODY KIT (26 COLORS) | 28 |
| All 26 Shades of Value Shade Opacious Body Assortment | |
| CZR FL AND VL GLAZE | 28 |
| Aesthetic Glossiness for Full-contour Restorations | |

CZR PRESS LF

| | |
|--|-----------|
| CZR PRESS SHADE BASE STAIN KIT (20 COLORS) Complete Assortment of Shade Base Stain | 33 |
| CZR PRESS SS MODIFIER KIT (11 COLORS) Complete Assortment of Shade Base Stain Modifier | 33 |
| CZR PRESS LF BASIC KIT (19 COLORS) Complete Assortment of LF Body | 33 |
| CZR PRESS LF EXTERNAL STAIN (ES) KIT (22 COLORS) Complete Assortment of External Stain | 33 |
| CZR PRESS LF INTERNAL STAIN (IS) COMPLETE KIT (19 COLORS) Complete Assortment of Internal Stain including Fluoro | 33 |
| CZR PRESS ESTHETIC WHITE KIT (8 COLORS) Assortment of Noritake Esthetic White (EW) Shades | 33 |
| CZR PRESS LF ESTHETIC WHITE LAYERING KIT (11 COLORS) Assortment of Esthetic White (EW) Shades | 34 |
| CZR PRESS LF LUSTER CCV KIT (16 COLORS) Assortment of Luster and CCV Shades including Aqua Blue & Super Gray | 34 |
| CZR PRESS LF TISSUE KIT (7 COLORS) Assortment of 7 Gingival Colors | 34 |

Noritake Super Porcelain EX-3

| | |
|---|-----------|
| EX-3 FULL KIT PST (65 COLORS) 40 Shades of EX-3 and 25 Shades of Paste Opaque | 39 |
| EX-3 nCOLOR FULL KIT PST (65 COLORS) Full Kit with nCOLOR Line-Ups / EX-3 Paste Opaque included | 39 |
| EX-3 nCOLOR INTRO KIT (12 COLORS) Intro Kit for Precious, Semi-Precious and Ni-Cr with Be Alloy Users | 39 |
| EX-3 nCOLOR INTRO POBA KIT (12 COLORS) Intro Kit for Ni-Cr without Be and Co-Cr Alloy Users | 39 |
| EX-3 PASTE OPAQUE BASIC KIT (17 COLORS) Basic Assortment of Paste Opaque | 39 |
| EX-3 PASTE OPAQUE MODIFIER KIT (8 COLORS) Modifier Assortment of Paste Opaque | 39 |
| EX-3 nCOLOR PASTE OPAQUE BASIC KIT (17 COLORS) Basic Assortment of Paste Opaque (nCOLOR) | 39 |
| EX-3 UNIVERSAL PASTE OPAQUE BASIC KIT (22 COLORS) Complete Assortment of Universal Paste Opaque | 40 |
| EX-3 UNIVERSAL PASTE OPAQUE MODIFIER KIT (8 COLORS) Modifier Assortment of Universal Paste Opaque | 40 |
| EX-3 PASTE OPAQUE NP BONDER (1 COLOR) Opaque Bonding Agent for Non-precious Metal | 40 |
| EX-3 nCOLOR BODY KIT (40 COLORS) Full Kit excluding Opaque (nCOLOR) | 40 |
| EX-3 VALUE SHADE BODY KIT (26 COLORS) All 26 Shades of Value Shade Body Assortment | 40 |
| EX-3 MARGIN PORCELAIN KIT (15 COLORS) Margin Porcelain Assortment | 40 |
| EX-3 ENAMEL/TRANSLUCENT COMPLETE KIT (14 COLORS) All Shades of EX-3 Enamel, Translucent and CCV | 41 |
| EX-3 LUSTER CCV KIT (16 COLORS) Luster & CCV Shades including Aqua Blue & Super Gray | 41 |
| EX-3 LUSTER COMPLETE KIT (19 COLORS) All Shades of EX-3 Luster | 41 |

Noritake Super Porcelain EX-3

| | |
|--|-----------|
| EX-3 OPACIOUS BODY COMPLETE KIT (20 COLORS) Opacious Body Assortment including OB Pale Pink | 41 |
| EX-3 VALUE SHADE OPACIOUS BODY KIT (26 COLORS) All 26 Shades of Value Shade Opacious Body Assortment | 41 |
| EX-3 EXTERNAL STAIN (ES) KIT (22 COLORS) Complete Assortment of External Stain | 41 |
| EX-3 INTERNAL STAIN (IS) COMPLETE KIT (19 COLORS) Complete Assortment of External Stain including Fluoro | 42 |
| EX-3 ESTHETIC WHITE KIT (11 COLORS) Assortment of Noritake Esthetic White (EW) Shades | 42 |
| EX-3 TISSUE KIT (7 COLORS) Assortment of 7 Repair Porcelains | 42 |
| ADDMATE KIT (7 COLORS) Assortment of 7 Tissue Colors | 42 |
| EX-3 SPEED ENAMEL Developed for 2-Layers Build-up Technique | 42 |
| SCREENING PORCELAIN KIT (17 COLORS) Assortment of Masking Porcelains for PLV & PJC | 42 |

LAB COMPOSITES

| | |
|-------------------------|-----------|
| ESTENIA™ C&B | 47 |
|-------------------------|-----------|

LAB MATERIALS

| | |
|----------------------|-----------|
| SUPER ROCK EX | 53 |
| NORI-VEST | 53 |

LAB ACCESSORIES

| | |
|------------------------------|-----------|
| CERAMIC ACCESSORIES | 56 |
| COMPOSITE ACCESSORIES | 58 |

DESCRIPTION AND GUARANTEE

| | |
|--------------------|-----------|
| DESCRIPTION | 62 |
| GUARANTEE | 62 |



KATANA™ Zirconia

KATANA™ Zirconia is the trade mark of high performance zirconia discs for crowns, bridges and frames with highly innovative features.

With the KATANA™ Zirconia discs you have excellent machinability, which avoids dipping during your production process. These zirconias contain advanced ceramic technology, which results in longevity. They show aesthetic translucency, exceptional shrinkage consistency on every distribution point within the disc, as well as high flexural strength.



KATANA™ Zirconia YML Yttria Multi-Layered

Long and complex geometries need ultimate strength, monolithic aesthetics and ultra-high incisal translucency. For a long time, these properties have been mutually exclusive, but they no longer are. With its strong body and highly translucent enamel layer, KATANA™ Zirconia YML offers the properties needed for an unlimited indication range. It is based on a new multi-layer technology featuring newly developed zirconia raw materials with different yttria concentrations integrated into a four-layer colour structure. The result is a chroma, translucency and flexural strength gradation with a seamless structure that makes it extraordinarily easy to produce high-quality, lifelike restorations – including monolithic long-span bridges.

KATANA™ Zirconia YML

| | | |
|-------------|----------|-------------|
| A1 COLLAR | T: 14 mm | #125-7932EU |
| A1 COLLAR | T: 18 mm | #125-7943EU |
| A1 COLLAR | T: 22 mm | #125-7954EU |
| A2 COLLAR | T: 14 mm | #125-7962EU |
| A2 COLLAR | T: 18 mm | #125-7973EU |
| A2 COLLAR | T: 22 mm | #125-7984EU |
| A3 COLLAR | T: 14 mm | #125-7992EU |
| A3 COLLAR | T: 18 mm | #125-8003EU |
| A3 COLLAR | T: 22 mm | #125-8014EU |
| A3.5 COLLAR | T: 14 mm | #125-8022EU |
| A3.5 COLLAR | T: 18 mm | #125-8033EU |
| A3.5 COLLAR | T: 22 mm | #125-8044EU |
| A4 COLLAR | T: 14 mm | #125-8052EU |
| A4 COLLAR | T: 18 mm | #125-8063EU |
| A4 COLLAR | T: 22 mm | #125-8074EU |
| B1 COLLAR | T: 14 mm | #125-8082EU |
| B1 COLLAR | T: 18 mm | #125-8093EU |
| B1 COLLAR | T: 22 mm | #125-8104EU |
| B2 COLLAR | T: 14 mm | #125-8112EU |
| B2 COLLAR | T: 18 mm | #125-8123EU |
| B2 COLLAR | T: 22 mm | #125-8134EU |
| B3 COLLAR | T: 14 mm | #125-8142EU |
| B3 COLLAR | T: 18 mm | #125-8153EU |
| B3 COLLAR | T: 22 mm | #125-8164EU |
| C1 COLLAR | T: 14 mm | #125-8172EU |
| C1 COLLAR | T: 18 mm | #125-8183EU |
| C1 COLLAR | T: 22 mm | #125-8194EU |
| C2 COLLAR | T: 14 mm | #125-8202EU |
| C2 COLLAR | T: 18 mm | #125-8213EU |
| C2 COLLAR | T: 22 mm | #125-8224EU |
| C3 COLLAR | T: 14 mm | #125-8232EU |
| C3 COLLAR | T: 18 mm | #125-8243EU |
| C3 COLLAR | T: 22 mm | #125-8254EU |

KATANA™ Zirconia YML

| | | |
|-----------|----------|-------------|
| D2 COLLAR | T: 14 mm | #125-8262EU |
| D2 COLLAR | T: 18 mm | #125-8273EU |
| D2 COLLAR | T: 22 mm | #125-8284EU |
| D3 COLLAR | T: 14 mm | #125-8292EU |
| D3 COLLAR | T: 18 mm | #125-8303EU |
| D3 COLLAR | T: 22 mm | #125-8314EU |
| NW COLLAR | T: 14 mm | #125-8322EU |
| NW COLLAR | T: 18 mm | #125-8333EU |
| NW COLLAR | T: 22 mm | #125-8344EU |

KATANA™ Zirconia UTML Ultra Translucent Multi-Layered

KATANA™ Zirconia UTML is a high translucent disc, which meets the requirements of highest translucency level for anterior crowns and veneers. All layers are highly translucent, whereby the color saturation is reduced in the incisal area. The transparency of the natural enamel is copied and the abutment shade is absorbed.

KATANA™ Zirconia UTML

| | | |
|-------------|----------|-------------|
| EA1 COLLAR | T: 14 mm | #125-3302EU |
| EA1 COLLAR | T: 18 mm | #125-3313EU |
| EA2 COLLAR | T: 14 mm | #125-3332EU |
| EA2 COLLAR | T: 18 mm | #125-3343EU |
| EA3 COLLAR | T: 14 mm | #125-3362EU |
| EA3 COLLAR | T: 18 mm | #125-3373EU |
| ENW COLLAR | T: 14 mm | #125-3392EU |
| ENW COLLAR | T: 18 mm | #125-3403EU |
| A1 COLLAR | T: 14 mm | #125-3842EU |
| A1 COLLAR | T: 18 mm | #125-3853EU |
| A2 COLLAR | T: 14 mm | #125-3872EU |
| A2 COLLAR | T: 18 mm | #125-3883EU |
| A3 COLLAR | T: 14 mm | #125-3902EU |
| A3 COLLAR | T: 18 mm | #125-3913EU |
| A3.5 COLLAR | T: 14 mm | #125-3932EU |
| A3.5 COLLAR | T: 18 mm | #125-3943EU |
| A4 COLLAR | T: 14 mm | #125-3962EU |
| A4 COLLAR | T: 18 mm | #125-3973EU |
| B1 COLLAR | T: 14 mm | #125-3992EU |
| B1 COLLAR | T: 18 mm | #125-4003EU |
| B2 COLLAR | T: 14 mm | #125-4022EU |
| B2 COLLAR | T: 18 mm | #125-4033EU |
| B3 COLLAR | T: 14 mm | #125-4052EU |
| B3 COLLAR | T: 18 mm | #125-4063EU |
| B4 COLLAR | T: 14 mm | #125-4082EU |
| B4 COLLAR | T: 18 mm | #125-4093EU |
| C1 COLLAR | T: 14 mm | #125-4112EU |
| C1 COLLAR | T: 18 mm | #125-4123EU |
| C2 COLLAR | T: 14 mm | #125-4142EU |
| C2 COLLAR | T: 18 mm | #125-4153EU |

KATANA™ Zirconia UTML

| | | |
|-----------|----------|-------------|
| C3 COLLAR | T: 14 mm | #125-4172EU |
| C3 COLLAR | T: 18 mm | #125-4183EU |
| C4 COLLAR | T: 14 mm | #125-4202EU |
| C4 COLLAR | T: 18 mm | #125-4213EU |
| D2 COLLAR | T: 14 mm | #125-4232EU |
| D2 COLLAR | T: 18 mm | #125-4243EU |
| D3 COLLAR | T: 14 mm | #125-4262EU |
| D3 COLLAR | T: 18 mm | #125-4273EU |
| D4 COLLAR | T: 14 mm | #125-4292EU |
| D4 COLLAR | T: 18 mm | #125-4303EU |



KATANA™ Zirconia STML Super Translucent Multi-Layered

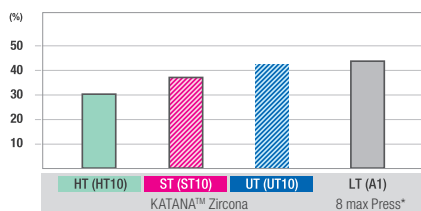
KATANA™ Zirconia STML is a multi-layered zirconia disc where light is transmitted in the incisal area and blocked in the cervical area. Due to its color and translucency gradient, more opacity in the cervical area and more translucency in the incisal area are achieved.

KATANA™ Zirconia STML

| | | |
|-------------|----------|-------------|
| A1 COLLAR | T: 14 mm | #125-3122EU |
| A1 COLLAR | T: 18 mm | #125-3133EU |
| A1 COLLAR | T: 22 mm | #125-3144EU |
| A2 COLLAR | T: 14 mm | #125-3152EU |
| A2 COLLAR | T: 18 mm | #125-3163EU |
| A2 COLLAR | T: 22 mm | #125-3174EU |
| A3 COLLAR | T: 14 mm | #125-3182EU |
| A3 COLLAR | T: 18 mm | #125-3193EU |
| A3 COLLAR | T: 22 mm | #125-3204EU |
| A3.5 COLLAR | T: 14 mm | #125-3212EU |
| A3.5 COLLAR | T: 18 mm | #125-3223EU |
| A3.5 COLLAR | T: 22 mm | #125-3234EU |
| NW COLLAR | T: 14 mm | #125-3242EU |
| NW COLLAR | T: 18 mm | #125-3253EU |
| NW COLLAR | T: 22 mm | #125-3264EU |

KATANA™ Zirconia STML

| | | |
|-----------|----------|-------------|
| A4 COLLAR | T: 14 mm | #125-5232EU |
| A4 COLLAR | T: 18 mm | #125-5243EU |
| A4 COLLAR | T: 22 mm | #125-5254EU |
| B1 COLLAR | T: 14 mm | #125-5262EU |
| B1 COLLAR | T: 18 mm | #125-5273EU |
| B1 COLLAR | T: 22 mm | #125-5284EU |
| B2 COLLAR | T: 14 mm | #125-5292EU |
| B2 COLLAR | T: 18 mm | #125-5303EU |
| B2 COLLAR | T: 22 mm | #125-5314EU |
| B3 COLLAR | T: 14 mm | #125-5322EU |
| B3 COLLAR | T: 18 mm | #125-5333EU |
| B3 COLLAR | T: 22 mm | #125-5344EU |
| C1 COLLAR | T: 14 mm | #125-5352EU |
| C1 COLLAR | T: 18 mm | #125-5363EU |
| C1 COLLAR | T: 22 mm | #125-5374EU |
| C2 COLLAR | T: 14 mm | #125-5382EU |
| C2 COLLAR | T: 18 mm | #125-5393EU |
| C2 COLLAR | T: 22 mm | #125-5404EU |
| C3 COLLAR | T: 14 mm | #125-5412EU |
| C3 COLLAR | T: 18 mm | #125-5423EU |
| C3 COLLAR | T: 22 mm | #125-5434EU |
| D2 COLLAR | T: 14 mm | #125-5442EU |
| D2 COLLAR | T: 18 mm | #125-5453EU |
| D2 COLLAR | T: 22 mm | #125-5464EU |
| D3 COLLAR | T: 14 mm | #125-5472EU |
| D3 COLLAR | T: 18 mm | #125-5483EU |
| D3 COLLAR | T: 22 mm | #125-5494EU |



Translucency Wave length of light: 700 nm.
Thickness of sample: 0.5 mm
Source: Kuraray Noritake Dental Inc.

KATANA™ Zirconia HTML PLUS Highly Translucent Multi-Layered

A high flexural strength is the most important precondition for the production of long-span bridges. With a strength of 1.150 MPa, KATANA™ Zirconia HTML PLUS offers the required property, and it offers it throughout the whole blank. Due to the use of improved raw materials developed inhouse, the material also offers a higher translucency than its predecessor HTML, as well as a brighter, deeper and more vivid colour for a better shade match with natural teeth. The result is a reliable framework or monolithic bridge with a beautiful shape and colour fitting the patient's natural dentition.

KATANA™ Zirconia HTML PLUS

| | | |
|-------------|----------|-------------|
| A1 COLLAR | T: 14 mm | #125-8922EU |
| A1 COLLAR | T: 18 mm | #125-8933EU |
| A1 COLLAR | T: 22 mm | #125-8944EU |
| A2 COLLAR | T: 14 mm | #125-8952EU |
| A2 COLLAR | T: 18 mm | #125-8963EU |
| A2 COLLAR | T: 22 mm | #125-8974EU |
| A3 COLLAR | T: 14 mm | #125-8982EU |
| A3 COLLAR | T: 18 mm | #125-8993EU |
| A3 COLLAR | T: 22 mm | #125-9004EU |
| A3.5 COLLAR | T: 14 mm | #125-9012EU |
| A3.5 COLLAR | T: 18 mm | #125-9023EU |
| A3.5 COLLAR | T: 22 mm | #125-9034EU |
| A4 COLLAR | T: 14 mm | #125-9042EU |
| A4 COLLAR | T: 18 mm | #125-9053EU |
| A4 COLLAR | T: 22 mm | #125-9064EU |
| B1 COLLAR | T: 14 mm | #125-9072EU |
| B1 COLLAR | T: 18 mm | #125-9083EU |
| B1 COLLAR | T: 22 mm | #125-9094EU |
| B2 COLLAR | T: 14 mm | #125-9102EU |
| B2 COLLAR | T: 18 mm | #125-9113EU |
| B2 COLLAR | T: 22 mm | #125-9124EU |
| B3 COLLAR | T: 14 mm | #125-9132EU |
| B3 COLLAR | T: 18 mm | #125-9143EU |
| B3 COLLAR | T: 22 mm | #125-9154EU |
| C1 COLLAR | T: 14 mm | #125-9162EU |
| C1 COLLAR | T: 18 mm | #125-9173EU |
| C1 COLLAR | T: 22 mm | #125-9184EU |
| C2 COLLAR | T: 14 mm | #125-9192EU |
| C2 COLLAR | T: 18 mm | #125-9203EU |
| C2 COLLAR | T: 22 mm | #125-9214EU |
| C3 COLLAR | T: 14 mm | #125-9222EU |
| C3 COLLAR | T: 18 mm | #125-9233EU |
| C3 COLLAR | T: 22 mm | #125-9244EU |
| D2 COLLAR | T: 14 mm | #125-9252EU |
| D2 COLLAR | T: 18 mm | #125-9263EU |
| D2 COLLAR | T: 22 mm | #125-9274EU |
| D3 COLLAR | T: 14 mm | #125-9282EU |
| D3 COLLAR | T: 18 mm | #125-9293EU |
| D3 COLLAR | T: 22 mm | #125-9304EU |
| NW COLLAR | T: 14 mm | #125-9312EU |
| NW COLLAR | T: 18 mm | #125-9323EU |
| NW COLLAR | T: 22 mm | #125-9334EU |

KATANA™ Zirconia HIGH-TRANSLUCENT Monochrome High-Performance Zirconia

The KATANA™ Zirconia HT disc is a high-translucent disc, which can be used ideally for highly individualized restorations. Its high aesthetic translucency fulfills all aesthetic demands. The low monoclinic transformation ensures outstanding durability to low temperature degradation. Noritake Zirconia material has superior aesthetic translucency. This is a big advantage to get a perfect result not only in Porcelain-Fused-Zirconia, but also Full-Contour-Zirconia solutions.

- High Strength (1,200MPa)
- High Translucency
- Match with CZR Internal & External Stain and CZR Glaze
- Pre-sintered and stable feature

KATANA™ Zirconia HT

| | | |
|----------------|----------|-------------|
| HT 10 STRAIGHT | T: 10 mm | #125-2111EU |
| HT 10 COLLAR | T: 14 mm | #125-2122EU |
| HT 10 COLLAR | T: 18 mm | #125-2133EU |
| HT 10 COLLAR | T: 22 mm | #125-2144EU |
| HT 10 COLLAR | T: 26 mm | #125-2155EU |
| HT 12 STRAIGHT | T: 10 mm | #125-2251EU |
| HT 12 COLLAR | T: 14 mm | #125-2262EU |
| HT 12 COLLAR | T: 18 mm | #125-2273EU |
| HT 12 COLLAR | T: 22 mm | #125-2284EU |
| HT 12 COLLAR | T: 26 mm | #125-2295EU |
| HT 13 STRAIGHT | T: 10 mm | #125-2301EU |
| HT 13 COLLAR | T: 14 mm | #125-2312EU |
| HT 13 COLLAR | T: 18 mm | #125-2323EU |
| HT 13 COLLAR | T: 22 mm | #125-2334EU |
| HT 13 COLLAR | T: 26 mm | #125-2345EU |

KATANA™ Zirconia Zirconia Disc for Crowns, Bridges and Frames with Unique, Higher Opacity

With the KATANA™ Zirconia disc you have appropriate hardness for milling, which avoids chipping. This zirconia has advanced ceramic technology and shows aesthetic translucency and exceptional shrinkage consistency on every distribution point within the disc and also high flexural strength (1,200MPa). KATANA™ Zirconia is a stabilized presintered zirconia with low monoclinic transformation and 98.5 mm rounded shape for open architectures.

RELATED MATERIAL

KATANA™ WAX

Suitable for casting metal and pressing ceramic ingots

- Raw zirconia (non pre-sintered)
- Easy burn-out and very little incineration residue

KATANA™ WAX

| | | |
|----------|------|-------------|
| Disc T20 | BLUE | #925-1516EU |
|----------|------|-------------|

RECOMMENDATION

PANAVIA™ V5

One Cement. All indications. One prime procedure. PANAVIA™ V5 is the strongest dentin bonding cement we ever developed.

It is our most aesthetic cement and comes in five beautiful shades. There is no better way to durably cement your crowns, single-wing cantilever bridges and veneers. It is also the most reliable way to cement your implant abutments.

CLEARFIL™ CERAMIC PRIMER PLUS

Before you start with PANAVIA™ V5, treat the tooth with our Tooth Primer CLEARFIL™ CERAMIC PRIMER PLUS: a secure adhesion to ceramic, hybrid ceramics, composites and metals is guaranteed with our universal primer which suits all your needs.

ORDER OUR PANAVIA™ V5 STANDARD KIT:

| | | |
|----------------|----------|----------|
| Universal (A2) | Content* | #3601-EU |
| Clear | Content* | #3602-EU |

*Syringe 4.6 ml, Tooth Primer 2 ml, CLEARFIL™ CERAMIC PRIMER PLUS 2 ml, 1 K-ETCHANT Syringe 3 ml, 15 pcs Mixing Tip, 5 pcs Endo Tip, 50 pcs Applicator Brush, Mixing Dish, 20 pcs Needle Tip



Esthetic Colorant

Esthetic Colorant for KATANA™ Zirconia

Esthetic Colorant was specially developed for “KATANA™ Zirconia” to imitate a variety of internal shades of the teeth easily and efficiently. The liquids are simply applied to the monolithic or anatomical restoration after milling using a metal-free brush, preferably a Liquid Brush Pen. The Esthetic Colorant diffuses into the pre-sintered structure and is fixed during sintering with no additional baking, and by doing so laying groundwork for the final fast and easy individualization. Although developed with “KATANA™ Zirconia” product range in mind, Esthetic Colorant can be used on any zirconia restorations.



Esthetic Colorant is available in 12 shades

Dentin

A Plus, B Plus, C Plus and D Plus

Incisal

Blue, Gray and Violet

Cervical

Brown and Orange

Tissue

Pink

Modifier

White and Opaque

An Esthetic Colorant Basic Kit is also available and contains all 12 shades, a handy set when you are getting started.

ESTHETIC COLORANT

| | | |
|------------------|----------------|------------|
| A plus | 12ml each | 127-0055EU |
| B plus | 12ml each | 127-0065EU |
| C plus | 12ml each | 127-0075EU |
| D plus | 12ml each | 127-0085EU |
| BROWN | 12ml each | 127-0095EU |
| ORANGE | 12ml each | 127-0105EU |
| GRAY | 12ml each | 127-0115EU |
| BLUE | 12ml each | 127-0125EU |
| VIOLET | 12ml each | 127-0135EU |
| PINK | 12ml each | 127-0145EU |
| WHITE | 12ml each | 127-0155EU |
| OPAQUE | 12ml each | 127-0165EU |
| Basic Kit | 12 x 12ml each | 127-0010EU |
| LIQUID BRUSH PEN | | 227-0019EU |

A SOLID FOUNDATION

All materials from the "KATANA™ Zirconia" series are an excellent basis for creating outstanding restorations with Esthetic Colorant. They are available with colour gradation and uniform translucency and flexural strength of various levels ("KATANA™ Zirconia" UTML, STML and HTML PLUS) or with colour, translucency and flexural strength gradation ("KATANA™ Zirconia" YML). Also "KATANA™ Zirconia" HT - high flexural strength zirconia - is a suitable match for Esthetic Colorant.



CERABIEN™ ZR (CZR)

CERABIEN™ ZR (CZR) FC PASTE STAIN

The addition of a new paste-type FC Paste Stain (a surface stain) to the CERABIEN™ ZR (CZR) line allows the easy characterization of full-zirconia restorations. FC Paste Stain is available in a total of 27 shades, for the reproduction of a wide variety of shades.

The full complement of blue and gray shades (Light Gray, Dark Gray, Grayish Blue, & Blue) makes the easy reproduction of blue-grayish transparency effects for incisal area possible. Two types of glaze (Glaze & Clear Glaze) make it easier to control the appearance of transparency across the entire crown.



COLOR COMPOSITION

FC PASTE STAIN COLOR COMPOSITION LIST

| |
|--------------------|
| Translucent |
| Glaze |
| Clear Glaze |
| Enamel |
| Light Gray |
| Dark Gray |
| Grayish Blue |
| Blue |
| Dentin |
| Cervical 1 |
| Cervical 2 |
| Cervical 3 |
| A+ |
| B+ |
| C+ |
| D+ |
| Enhancement |
| White |
| Mamelon Orange 1 |
| Mamelon Orange 2 |
| Earth Brown |
| Reddish Brown |
| Adjustment |
| Value |
| Black |
| Green 1 |
| Green 2 |
| Yellow |
| Salmon Pink |
| Pink |
| Red |
| Fluoro |



FC Paste Stain Clear Glaze



FC Paste Stain Cervical 1

CERABIEN™ ZR (CZR) FC PASTE STAIN

CERABIEN™ ZR (CZR) FC PASTE STAIN

| | |
|--|-------------|
| CZR FC PASTE STAIN FULL KIT | #104-5590EU |
| CZR FC PASTE STAIN BLACK (3 g) | #104-5601EU |
| CZR FC PASTE STAIN LIGHT GRAY (3 g) | #104-5611EU |
| CZR FC PASTE STAIN DARK GRAY (3 g) | #104-5621EU |
| CZR FC PASTE STAIN GRAYISH BLUE (3 g) | #104-5631EU |
| CZR FC PASTE STAIN BLUE (3 g) | #104-5641EU |
| CZR FC PASTE STAIN GREEN1 (3 g) | #104-5651EU |
| CZR FC PASTE STAIN GREEN2 (3 g) | #104-5661EU |
| CZR FC PASTE STAIN YELLOW (3 g) | #104-5671EU |
| CZR FC PASTE STAIN MAMELON ORANGE1 (3 g) | #104-5681EU |
| CZR FC PASTE STAIN MAMELON ORANGE2 (3 g) | #104-5691EU |
| CZR FC PASTE STAIN CERVICAL1 (3 g) | #104-5701EU |
| CZR FC PASTE STAIN CERVICAL2 (3 g) | #104-5711EU |
| CZR FC PASTE STAIN CERVICAL3 (3 g) | #104-5721EU |
| CZR FC PASTE STAIN EARTH BROWN (3 g) | #104-5731EU |
| CZR FC PASTE STAIN REDDISH BROWN (3 g) | #104-5741EU |
| CZR FC PASTE STAIN SALMON PINK (3 g) | #104-5751EU |
| CZR FC PASTE STAIN PINK (3 g) | #104-5761EU |
| CZR FC PASTE STAIN RED (3 g) | #104-5771EU |
| CZR FC PASTE STAIN A+ (3 g) | #104-5781EU |
| CZR FC PASTE STAIN B+ (3 g) | #104-5791EU |
| CZR FC PASTE STAIN C+ (3 g) | #104-5801EU |
| CZR FC PASTE STAIN D+ (3 g) | #104-5811EU |
| CZR FC PASTE STAIN WHITE (3 g) | #104-5821EU |
| CZR FC PASTE STAIN VALUE (3 g) | #104-5831EU |
| CZR FC PASTE STAIN FLUORO (3 g) | #104-5841EU |
| CZR FC PASTE STAIN GLAZE (5 g) | #104-5851EU |
| CZR FC PASTE STAIN CLEAR GLAZE (5 g) | #104-5861EU |
| CZR FC PASTE STAIN BASIC KIT | #104-5870EU |
| CZR FC PASTE STAIN COLOR GUIDE | #211-2389EU |



CZR FC Paste Stain Full Kit



CZR FC Paste Stain Basic Kit

OPTIMIZED FOR FULL-ZIRCONIA RESTORATIONS

Aesthetic full-zirconia restorations can be fabricated efficiently by combining FC Paste Stain with KATANA™ Zirconia UTML, STML or HTML PLUS.*



*FC Paste Stain can be used on the surfaces of restorations where CERABIEN™ ZR (CZR) or CZR PRESS LF is layered on KATANA™ Zirconia. For detailed information, please refer to the CERABIEN™ ZR (CZR) Instructions for Use or the CERABIEN™ ZR (CZR) FC Paste Stain Technical Manual.

CZR FC PASTE STAIN BASIC KIT 104-5870EU

| | |
|---------------------------|-------------|
| Clear Glaze | Dark Grey |
| Grayish Blue | Cervical 2 |
| Earth Brown | Salmon Pink |
| A+ | White |
| ES liquid and color guide | |

CZR FC PASTE STAIN FULL KIT 104-5590EU

Contains all 27 colors, ES liquid and color guide

CERABIEN™ ZR (CZR)

CZR ("CERABIEN™ ZR") is a porcelain system for making all ceramic crowns in use with zirconia frameworks. Single crown made from CZR with zirconia can be used in the posterior as well as anterior due to its extremely high flexural strength. The combination of CZR and zirconia will give you enhanced aesthetics and fit with maximum strength for an overall superior restoration.



BASIC FULL KIT

Full Kit with Shade Base

BASIC FULL KIT is an excellent kit composed of basic colors for all ceramic crowns and bridges, using Zirconia frameworks. Shade Base porcelains are included instead of Shade Base Stains.

BASIC FULL KIT (630 g) #104-1740EU

| | | |
|-------------|-----------|-----------|
| SB (POWDER) | 10 g each | 18 colors |
| BODY | 10 g each | 18 colors |
| ENAMEL | 10 g each | 4 colors |
| TRANSLUCENT | 10 g each | 4 colors |
| CERVICAL | 10 g each | 4 colors |
| MODIFIER | 10 g each | 13 colors |
| ADD-ON | 10 g each | 2 colors |

SS BASIC FULL KIT

Full Kit with CZR PRESS LF Shade Base Stain

SS BASIC FULL KIT is an excellent kit composed of basic colors for all ceramic crowns and bridges, using Zirconia frameworks. SS BASIC FULL KIT has the same shade selection as BASIC FULL KIT. Shade Base Stains are included instead of Shade Base porcelains.

SS BASIC FULL KIT (504 g) #104-1760EU

| | | |
|-------------|-----------|-----------|
| SS (STAIN) | 3 g each | 18 colors |
| BODY | 10 g each | 18 colors |
| ENAMEL | 10 g each | 4 colors |
| TRANSLUCENT | 10 g each | 4 colors |
| CERVICAL | 10 g each | 4 colors |
| MODIFIER | 10 g each | 13 colors |
| ADD-ON | 10 g each | 2 colors |

MARGIN KIT

Margin Porcelain Assortment

In addition to ordinary usage, MARGIN PORCELAIN can be used to correct a chip in the Zirconia framework. The use of MAGIC FORMER as forming liquid is highly recommended.

MARGIN KIT (190 g) #104-1770EU

| | | |
|-----------------------|-----------|-----------|
| BASIC SHADE: | 10 g each | 14 colors |
| SPECIAL COLOR | 10 g each | 3 colors |
| DILUTION POWDER (MDL) | 10 g each | 1 color |
| RETOUCHING POWDER | 10 g each | 1 color |

ENAMEL / TRANSLUCENT COMPLETE KIT

All Shades of CZR Enamel, Translucent and CCV

E/T COMPLETE KIT (140 g) #104-1780EU

| | | |
|-------------|-----------|----------|
| ENAMEL | 10 g each | 5 colors |
| TRANSLUCENT | 10 g each | 5 colors |
| CERVICAL | 10 g each | 4 colors |

LUSTER CCV KIT

All Luster & CCV Shades including Aqua Blue & Super Gray

LUSTER PORCELAIN reproduces natural enamel in both surface features and color. LUSTER PORCELAIN reproduces the fine surface structure and luster of natural teeth. A unique combination of fine surface particles produces a selective reflection of light that results in the same opalescence seen in natural teeth.

LUSTER CCV KIT (160 g) #104-1790EU

| | | | |
|-----------|-----------------|---------------|------------|
| 10 g each | LTO | LT1 | T Blue |
| | AQUA BLUE 1 | AQUA BLUE 2 | LT NATURAL |
| | LT SUPER GRAY | CREAMY ENAMEL | SUN BRIGHT |
| | INCISAL AUREOLA | CREAMY WHITE | LT YELLOW |
| | CCV-1 | CCV-2 | CCV-3 |
| | CCV-4 | | |



LUSTER COMPLETE KIT

All Shades of CZR Luster

LUSTER PORCELAIN is designed to replicate the exact subtle complexities in shades and texture of natural enamel. It contains extremely fine particles, and it accurately reproduces the natural opalescence of enamel.

LUSTER COMPLETE KIT (190 g) #104-1800EU

| | | |
|--------|-----------|-----------|
| LUSTER | 10 g each | 19 colors |
|--------|-----------|-----------|

OPACIOUS BODY COMPLETE KIT

Opacious Body Assortment

OPACIOUS BODY can be used to achieve delicate colors and to control translucency.

OB COMPLETE KIT (200 g) #104-1810EU

| | | |
|---------------|-----------|--------------|
| BASIC SHADE | 10 g each | 16 colors |
| SPECIAL COLOR | 10 g each | OB White |
| SPECIAL COLOR | 10 g each | OB Orange |
| SPECIAL COLOR | 10 g each | OB Pale Pink |
| SPECIAL COLOR | 10 g each | OBE |

EXTERNAL STAIN (ES) KIT

Complete Assortment of External Stain

EXTERNAL STAIN reproduces the great variety of color shades observed on the surface of natural teeth.

EXTERNAL STAIN KIT (73 g) #104-1820EU

| | | |
|---------------|-----------|----------|
| PURE WHITE | 3 g each | |
| GRAY | 3 g each | |
| BLACK | 3 g each | |
| BLUE | 3 g each | |
| GREEN 1 | 3 g each | |
| GREEN 2 | 3 g each | |
| YELLOW | 3 g each | |
| ORANGE 1 | 3 g each | |
| ORANGE 2 | 3 g each | |
| CV-1 | 3 g each | |
| CV-2 | 3 g each | |
| CV-3 | 3 g each | |
| EARTH BROWN | 3 g each | |
| REDDISH BROWN | 3 g each | |
| SALMON PINK | 3 g each | |
| PINK | 3 g each | |
| RED | 3 g each | |
| A+ | 3 g each | |
| B+ | 3 g each | |
| C+ | 3 g each | |
| D+ | 3 g each | |
| GLAZE | 10 g each | 1 color |
| ES LIQUID | 10 ml | 1 bottle |

INTERNAL STAIN (IS) COMPLETE KIT

Complete Assortment of Internal Stain including Fluoro

With INTERNAL STAIN it is possible to replicate many of the most intricate three-dimensional patterns of shade variation found in natural teeth. IS FLUORO is added to the kit.

| INTERNAL STAIN COMPLETE KIT (57 g) | | #104-1840EU |
|------------------------------------|----------|-------------|
| WHITE | 3 g each | |
| INCISAL BLUE 1 | 3 g each | |
| INCISAL BLUE 2 | 3 g each | |
| MAMELON ORANGE 1 | 3 g each | |
| MAMELON ORANGE 2 | 3 g each | |
| CV-1 | 3 g each | |
| CV-2 | 3 g each | |
| CV-3 | 3 g each | |
| EARTH BROWN | 3 g each | |
| REDDISH BROWN | 3 g each | |
| FLUORO | 3 g each | |
| SALMON PINK | 3 g each | |
| RED | 3 g each | |
| A+ | 3 g each | |
| B+ | 3 g each | |
| C+ | 3 g each | |
| D+ | 3 g each | |
| GRAY | 3 g each | |
| BRIGHT (DILUTION) | 3 g each | 1 color |
| IS LIQUID | 10 ml | 1 bottle |

ESTHETIC WHITE KIT

Assortment of Noritake Esthetic White (EW) Shades with Shade Base

ESTHETIC WHITE KIT is for creating whiter shades rather than NW shades. It is not only pure bleaching shades but also natural and beautiful white shades.

| ESTHETIC WHITE KIT (110 g) | | #104-1870EU |
|----------------------------|----------|------------------------|
| SP (POWDER) | 3 g each | SB WHITE, SBB1 |
| BODY | 3 g each | EWO0B, EW0B, EWB, EWYB |
| ENAMEL | 3 g each | SILKY E1, SILKY E2 |
| LUSTER TRANSLUCENT | 3 g each | ELT1, ELT2, ELT3 |

SS ESTHETIC WHITE KIT

Assortment of Noritake Esthetic White (EW) Shades with CZR PRESS Shade Base Stain

SS ESTHETIC WHITE KIT is for creating whiter shades than NW shades. It is not only pure bleaching shades but also natural and beautiful white shades.

| SS ESTHETIC WHITE KIT (96 g) | | #104-1880EU |
|------------------------------|----------|------------------------|
| SS (STAIN) | 3 g each | SS WHITE, SSB1 |
| BODY | 3 g each | EWO0B, EW0B, EWB, EWYB |
| ENAMEL | 3 g each | SILKY E1, SILKY E2 |
| LUSTER TRANSLUCENT | 3 g each | ELT1, ELT2, ELT3 |

TISSUE KIT

Assortment of 7 Gingival Colors

TISSUE KIT is a complete kit of 7 Noritake Tissue Colors. All colors are very useful for implant work.

| TISSUE KIT (70 g) | | #104-1890EU |
|-------------------|-----------|-------------|
| Tissue | 10 g each | TISSUE 1-7 |

“CERABIEN™ ZR” OPAQUE SHADES

Five opaque shades that deliver high opacity, resulting in even more lifelike restorations. The opaque shades make it even easier to adjust zirconia colours, especially when building-up tissue porcelain on a framework as well as masking metal or discoloured abutments.

OPAQUE SHADES

| | | |
|---------------------|-----------|------------|
| Opaque White | 10 g each | 104-5931EU |
| Opaque Light | 10 g each | 104-5941EU |
| Opaque Dark | 10 g each | 104-5951EU |
| Opaque Light Tissue | 10 g each | 104-5961EU |
| Opaque Dark Tissue | 10 g each | 104-5971EU |
| Opaque White | 50 g each | 104-5982EU |
| Opaque Light | 50 g each | 104-5992EU |
| Opaque Dark | 50 g each | 104-6002EU |
| Opaque Light Tissue | 50 g each | 104-6012EU |
| Opaque Dark Tissue | 50 g each | 104-6022EU |
| Color Guide 431 | SB OPAQUE | 211-2569EU |
| Color Guide 4003 | COMPLETE | 211-2579EU |

VALUE SHADE FULL KIT

Value Shades including CZR PRESS LF Shade Base Stain

Noritake Value Shades are additional shades that expand the existing “Noritake Super Porcelain EX-3” and “CERABIEN™ ZR” selection of Body and Opacious Body porcelain powders to include the VITA 3D-Master® shades. With the Noritake Value Shades you will discover a simple, quick, and precise solution to completing VITA 3D-Master® shade restorations. VALUE SHADE FULL KIT is an excellent kit composed of basic colors for all ceramic crowns and bridges, using Zirconia frameworks.

| VALUE SHADE FULL KIT (480 g) | | #104-5490EU |
|------------------------------|-----------|-------------|
| SS (STAIN) | 3 g each | 10 colors |
| BODY | 10 g each | 28 colors |
| ENAMEL | 10 g each | 3 colors |
| TRANSLUCENT | 10 g each | 3 colors |
| ADD-ON | 10 g each | 2 colors |
| LUSTER | 10 g each | 9 colors |

VALUE SHADE BODY KIT

All 26 Shades of Value Shade Body Assortment

VALUE SHADE BODY KIT is an ideal assortment of basic shades.

| VALUE SHADE BODY KIT (260 g) | | #104-5500EU | |
|------------------------------|-------|-------------|-------|
| 10 g each | 1110B | 1120B | 2015B |
| | 2025B | 2110B | 2120B |
| | 2130B | 2215B | 2225B |
| | 3015B | 3025B | 3110B |
| | 3120B | 3130B | 3215B |
| | 3225B | 4015B | 4025B |
| | 4110B | 4120B | 4130B |
| | 4215B | 4225B | 5110B |
| | 5120B | 5130B | |

VALUE SHADE OPACIOUS BODY KIT

All 26 Shades of Value Shade Opacious Body Assortment

OPACIOUS BODY can be used to achieve delicate colors and to control translucency.

VALUE SHADE OPACIOUS BODY KIT (260 g)

#104-5510EU

| 10 g each | OB1110 | OB1120 | OB2015 |
|-----------|--------|--------|--------|
| | OB2025 | OB2110 | OB2120 |
| | OB2130 | OB2215 | OB2225 |
| | OB3015 | OB3025 | OB3110 |
| | OB3120 | OB3130 | OB3215 |
| | OB3225 | OB4015 | OB4025 |
| | OB4110 | OB4120 | OB4130 |
| | OB4215 | OB4225 | OB5110 |
| | OB5120 | OB5130 | |

RELATED MATERIALS

CZR FL GLAZE (INCLUDING FLUORESCENCE) CZR VC GLAZE (FOR VALUE CONTROL)

These glaze powders are recommended to achieve aesthetic glossiness for full-contour restorations.

CZR FL AND VC GLAZE

| | | |
|-----------------|-----------|------------|
| CZR ES FL GLAZE | 10 g each | 104-5571EU |
| CZR ES VC GLAZE | 10 g each | 104-5581EU |

“THE COMBINATION OF CZR
AND ZIRCONIA WILL GIVE
YOU ENHANCED AESTHETICS
AND FIT WITH MAXIMUM
STRENGTH FOR AN OVERALL
SUPERIOR RESTORATION.”

CZR PRESS LF

CZR PRESS LF

CZR PRESS LF technology is realized by the two time-proven technologies, oxide ceramics and pressable ceramics. This synergy combines the strength fracture toughness and cementability of pure zirconia copings, with the marginal integrity, versatility and beauty of pressable ceramics.



SHADE BASE STAIN KIT

Complete Assortment of Shade Base Stain

SHADE BASE STAIN KIT is a kind of stain to make the basic shade color of zirconia framework before pressing ceramic ingot. The basic shade color can be recreated thinly, transparently and naturally with the simple stain technique.

| SHADE BASE STAIN KIT (60 g) | | #107-0010EU |
|-----------------------------|----------|-------------|
| BASIC SHADE | 3 g each | 20 colors |
| IS LIQUID | 10 ml | 1 bottle |

SS MODIFIER KIT

Complete Assortment of Shade Base Stain

Modifier

SS MODIFIER KIT is an assortment of all available SS Modifiers. It can be mixed with CZR PRESS Shade Base Stain to customize the shade or may be applied alone for minor modifications.

| SS MODIFIER KIT (33 g) | | #107-0020EU |
|------------------------|----------|-------------|
| A+ | 3 g each | |
| B+ | 3 g each | |
| C+ | 3 g each | |
| D+ | 3 g each | |
| FLUORO | 3 g each | |
| CV ORANGE | 3 g each | |
| INCISAL BLUE 1 | 3 g each | |
| INCISAL BLUE 2 | 3 g each | |
| GRAY | 3 g each | |
| SALMON PINK | 3 g each | |
| EARTH BROWN | 3 g each | |
| IS LIQUID | 10 ml | 1 bottle |

LF BASIC KIT

Complete Assortment of LF Body

LF BASIC KIT is a basic assortment for layering of stand-alone CZR PRESS crowns. It also can be used with normal CZR layering. 7 LF BODY shades are very useful for minor corrections of pressed body shape.

| LF BASIC KIT (190 g) | | #107-0090EU |
|----------------------|-----------|---|
| BODY | 10 g each | HA1B, HA3B, HA4B, HB2B, HC2B, HD2B, HNW0B |
| ENAMEL | 10 g each | E1, E2, E3 |
| TRANSLUCENT | 10 g each | TX, T0, T1, T2 |
| MODIFIER | 10 g each | MAMELON 1-2 |
| ADD-ON | 10 g each | AD-T, AD-B |
| MARGIN | 10 g each | MRP |

LF EXTERNAL STAIN (ES) KIT

Complete Assortment of External Stain

LF EXTERNAL STAIN KIT is a set of low fusing stains for CZR PRESS LF porcelain. It is necessary to use this stain after CZR PRESS LF layering. Baking temperature of this stain is 840°C.

| LF EXTERNAL STAIN KIT (73 g) | | #107-0100EU |
|------------------------------|----------|-------------|
| PURE WHITE | 3 g each | |
| GRAY | 3 g each | |
| BLACK | 3 g each | |
| BLUE | 3 g each | |
| GREEN 1 | 3 g each | |
| GREEN 2 | 3 g each | |
| YELLOW | 3 g each | |
| ORANGE 1 | 3 g each | |
| ORANGE 2 | 3 g each | |
| CV-1 | 3 g each | |
| CV-2 | 3 g each | |
| CV-3 | 3 g each | |
| EARTH BROWN | 3 g each | |
| REDDISH BROWN | 3 g each | |
| SALMON PINK | 3 g each | |
| PINK | 3 g each | |
| RED | 3 g each | |
| A+ | 3 g each | |
| B+ | 3 g each | |
| C+ | 3 g each | |
| D+ | 3 g each | |
| GLAZE | 10 g | 1 color |
| ES LIQUID | 10 ml | 1 bottle |

LF INTERNAL STAIN (IS) COMPLETE KIT

Complete Assortment of Internal Stain including Fluoro

LF INTERNAL STAIN KIT is a set of low fusing stains for CZR PRESS LF porcelain. It is necessary to use this stain before CZR PRESS LF layering. Baking temperature of this stain is 800°C.

| LF IS COMPLETE KIT (57 g) | | #107-0120EU |
|---------------------------|----------|-------------|
| WHITE | 3 g each | |
| INCISAL BLUE 1 | 3 g each | |
| INCISAL BLUE 2 | 3 g each | |
| MAMELON ORANGE 1 | 3 g each | |
| MAMELON ORANGE 2 | 3 g each | |
| CV-1 | 3 g each | |
| CV-2 | 3 g each | |
| CV-3 | 3 g each | |
| EARTH BROWN | 3 g each | |
| REDDISH BROWN | 3 g each | |
| GRAY | 3 g each | |
| FLUORO | 3 g each | |
| SALMON PINK | 3 g each | |
| RED | 3 g each | |
| A+ | 3 g each | |
| B+ | 3 g each | |
| C+ | 3 g each | |
| D+ | 3 g each | |
| BRIGHT | 3 g each | 1 color |
| IS LIQUID | 10 ml | 1 bottle |

LF ESTHETIC WHITE LAYERING KIT
Assortment of Esthetic White (EW) Shades

LF ESTHETIC WHITE LAYERING KIT is developed to create whiter shades than NW shades. It contains not only pure bleaching shades but also natural and beautiful white shades.

LF ESTHETIC WHITE LAYERING KIT (89 g) #107-0140EU

| | | |
|------------------|-----------|------------------------|
| SHADE BASE STAIN | 3 g each | SS WHITE, SSB1 |
| BODY | 10 g each | EW00B, EW0B, EWB, EWYB |
| EXTERNAL STAIN | 3 g | B+ |
| GLAZE | 10 g | CZR GLAZE |

LF LUSTER CCV KIT
Luster & CCV Shades including Aqua Blue & Super Gray

LF LUSTER/CCV KIT is an assortment of all available CZR PRESS LF LUSTER and CCV porcelains. LUSTER can produce beautiful surface textures with natural opalescence. CCV is very effective when applying on cervical area.

CZR PRESS LF LUSTER CCV KIT (160 g) #107-0150EU

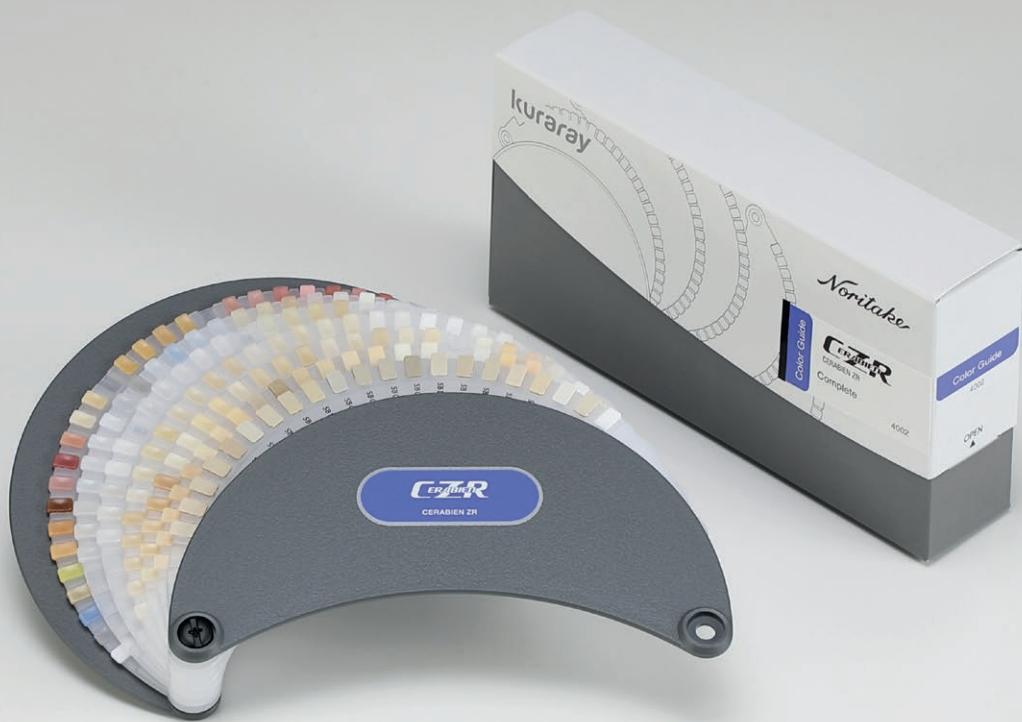
| | | | |
|-----------|-----------------|---------------|------------|
| 10 g each | LTO | LT1 | T BLUE |
| | AQUA BLUE 1 | AQUA BLUE 2 | LT NATURAL |
| | LT SUPER GRAY | CREAMY ENAMEL | SUN BRIGHT |
| | INCISAL AUREOLA | CREAMY WHITE | LT YELLOW |
| | CCV-1 | CCV-2 | CCV-3 |
| | CCV-4 | | |

LF TISSUE KIT
Assortment of 7 Gingival Colors

LF TISSUE KIT is a complete kit of 7 Noritake Tissue colors. All colors are very useful for implant work.

LF TISSUE KIT (70 g) #107-0160EU

| | | |
|--------|-----------|--------------|
| TISSUE | 10 g each | TISSUE 1 - 7 |
|--------|-----------|--------------|



Noritake Super Porcelain EX-3

DENTAL PORCELAIN for Metal Framework Restorations.

The fabrication procedures for Noritake Super Porcelain EX-3 are remarkably easy. Its outstanding features are made possible because of its very fine particle size. Noritake Super Porcelain EX-3 is superior to other dental porcelains because its coefficient of thermal expansion (CTE) remains stable during repeated bakings. Therefore, when making a long-span bridge, each unit may be precisely customized with repeated baking of the entire span with minimal risk of cracking. It is compatible with precious, semi-precious, non-precious and silverfree alloys for metal-ceramic prostheses. Its fluorescence is ideal and it is highly resistant to silver-induced greening. This combination of features makes Noritake Super Porcelain EX-3 an ideal choice for porcelain restorations.



FULL KIT PST

40 Shades of Noritake Super Porcelain EX-3 and 25 Shades of Paste Opaque

The fabrication procedures for Noritake Super Porcelain EX-3 are remarkably easy. Its outstanding features are made possible because of its very fine particle size. Noritake Super Porcelain EX-3 is superior to other dental porcelains because its coefficient of thermal expansion (CTE) remains stable during repeated baking. Therefore, when making a long-span bridge, each unit may be precisely customized with repeated baking of the entire span with minimal risk of cracking. It is compatible with precious, semi-precious, non-precious and silver free alloys for metal-ceramic prostheses. Its fluorescence is ideal and it is highly resistant to silver-induced greening. This combination of features makes Noritake Super Porcelain EX-3 an ideal choice for porcelain restorations.

FULL KIT PST (526 g) #102-0020EU

| | | |
|---------------------|-----------|-----------|
| Paste Opaque | 6 g each | 17 colors |
| Paste Opaque | 3 g each | 8 colors |
| Cervical | 10 g each | 4 colors |
| Enamel | 10 g each | 3 colors |
| Translucent | 10 g each | 4 colors |
| Body | 10 g each | 16 colors |
| Modifier | 10 g each | 11 colors |
| ADD-ON | 10 g each | 2 colors |
| EX-3 FORMING LIQUID | 10 ml | 1 bottle |
| EX-3 PO LIQUID | 10 ml | 1 bottle |

nCOLOR FULL KIT PST

Full Kit with nCOLOR Line-ups / EX-3 Paste Opaque included

The fabrication procedures for Noritake Super Porcelain EX-3 are remarkably easy. Its outstanding features are made possible because of its very fine particle size. Noritake Super Porcelain EX-3 is superior to other dental porcelains because its coefficient of thermal expansion (CTE) remains stable during repeated bakings. Therefore, when making a long-span bridge, each unit may be precisely customized with repeated baking of the entire span with minimal risk of cracking. It is compatible with precious, semi-precious, non-precious and silverfree alloys for metal-ceramic prostheses. Its fluorescence is ideal and it is highly resistant to silver-induced greening. This combination of features makes Noritake Super Porcelain EX-3 an ideal choice for porcelain restorations.

nCOLOR FULL KIT PST (526 g) #102-0030EU

| | | |
|-----------------------|-----------|-----------|
| PASTE OPAQUE | 6 g each | 16 colors |
| BASE PASTE (POBA) | 6 g each | 1 color |
| PASTE OPAQUE MODIFIER | 3 g each | 8 colors |
| BODY | 10 g each | 16 colors |
| ENAMEL | 10 g each | 3 colors |
| TRANSLUCENT | 10 g each | 4 colors |
| CERVICAL | 10 g each | 4 colors |
| ADD-ON | 10 g each | 2 colors |
| MODIFIER | 10 g each | 11 colors |
| PASTE OPAQUE LIQUID | 10 ml | 1 bottle |
| FORMING LIQUID | 20 ml | 1 bottle |
| PASTE OPAQUE BRUSH | | 2 pieces |
| MODIFIER BRUSH | | 1 piece |

nCOLOR INTRO KIT

Intro Kit for Precious, Semi-Precious and Ni-Cr with Be Alloy Users

nCOLOR INTRO KIT is a good assortment kit for trial of Noritake Super Porcelain EX-3. nCOLOR INTRO KIT for Precious, Semi-Precious and Ni-Cr with Be alloy users.

nCOLOR INTRO KIT (102 g) #102-0050EU

| | | |
|-----------------------|-----------|-------------------------------------|
| PASTE OPAQUE | 6 g each | P0nA2, P0nA3, (POBA) |
| BODY | 10 g each | nA2B, nA3B |
| ENAMEL | 10 g each | E2, E3 |
| TRANSLUCENT / OTHERS: | 10 g each | TX, LT1, CREAMY, ENAMEL, CCV1, AD-T |
| FORMING LIQUID | 10 ml | 1 bottle |
| PASTE OPAQUE BRUSH | | 1 piece |

nCOLOR INTRO POBA KIT

Intro Kit for Ni-Cr without Be and Co-Cr Alloy Users

nCOLOR INTRO POBA KIT is a good assortment kit for trial of Noritake Super Porcelain EX-3. nCOLOR INTRO POBA KIT for Ni-Cr without Be, Co-Cr and semi-precious with Cu alloy users.

nCOLOR INTRO POBA KIT (108 g) #102-0060EU

| | | |
|----------------------|-----------|-------------------------------------|
| PASTE OPAQUE | 6 g each | P0nA2, P0nA3, (POBA) |
| BODY | 10 g each | nA2B, nA3B |
| ENAMEL | 10 g each | E2, E3 |
| TRANSLUCENT / OTHERS | 10 g each | TX, LT1, CREAMY, ENAMEL, CCV1, AD-T |
| FORMING LIQUID | 10 ml | 1 bottle |
| PASTE OPAQUE BRUSH | | 1 piece |

PASTE OPAQUE BASIC KIT

Basic Assortment of Paste Opaque

PASTE OPAQUE BASIC KIT is a paste-type opaque kit that is extremely easy to use. Even a novice can completely mask the metal with a thin even coat. It is highly effective at masking the metal line at the margin. Paste-opaque can mask the metal color with a thinner coat than that required for powder opaque. This thinner coat provides more space for subsequent porcelain layers, permitting a more natural appearance.

P. O. BASIC KIT (102 g) #102-0080EU

| | | |
|--------------------|----------|-----------|
| BASIC SHADE | 6 g each | 16 colors |
| BASE PASTE (POBA) | 6 g each | 1 color |
| PASTE OPAQUE BRUSH | | 2 pieces |

PASTE OPAQUE MODIFIER KIT

Modifier Assortment of Paste Opaque

The PASTE OPAQUE MODIFIER KIT may be mixed with Noritake Super Porcelain EX-3 PASTE OPAQUE to customize the shade or may be applied alone for minor modifications.

P. O. MODIFIER KIT (24 g) #102-0090EU

| | | |
|---------------------|----------|----------|
| WHITE | 3 g each | |
| YELLOW | 3 g each | |
| BLUE | 3 g each | |
| GRAY | 3 g each | |
| PINK | 3 g each | |
| ORANGE | 3 g each | |
| EARTH BROWN | 3 g each | |
| REDISH BROWN | 3 g each | |
| MODIFIER BRUSH | | 1 piece |
| PASTE OPAQUE LIQUID | 10 ml | 1 bottle |

nCOLOR PASTE OPAQUE BASIC KIT

Basic Assortment of Paste Opaque (nCOLOR)

nCOLOR PASTE OPAQUE BASIC KIT is a paste-type opaque kit that is extremely easy to use. Even a novice can completely mask the metal with a thin even coat. It is highly effective at masking the metal line at the margin. Paste-opaque can mask the metal color with a thinner coat than that required for powder opaque. This thinner coat provides more space for subsequent porcelain layers, permitting a more natural appearance.

nCOLOR P. O. BASIC KIT (102 g) #102-0100EU

| | | |
|--------------------|----------|-----------|
| BASIC SHADE | 6 g each | 16 colors |
| BASE PASTE (POBA) | 6 g each | 1 color |
| PASTE OPAQUE BRUSH | | 2 pieces |

UNIVERSAL PASTE OPAQUE BASIC KIT

Complete Assortment of Universal Paste Opaque

Noritake Super Porcelain EX-3 UNIVERSAL PASTE OPAQUE can be used for a wide range of alloys such as High Noble, Noble and non-precious alloys. POBA is not necessary to be used when applying on Co-Cr or Ni-Cr without beryllium. Its handling is extremely easy! A wide variety of 22 shades including Noritake Original Shades and Esthetic Shades are available.

UNIVERSAL PASTE OPAQUE BASIC KIT is a complete assortment kit of all 22 available shades. Basic shades are based on "nColor" and its handling is very easy. It is possible to use Noritake Super Porcelain EX-3 Layering over metal frameworks.

| UNIVERSAL P. O. BASIC KIT (132 g) #102-0110EU | | |
|---|----------|-----------|
| UNIVERSAL PASTE | 6 g each | 22 colors |
| PASTE OPAQUE BRUSH | | 1 piece |

UNIVERSAL PASTE OPAQUE MODIFIER KIT

Modifier Assortment of Universal Paste Opaque

UNIVERSAL PASTE OPAQUE MODIFIER KIT may be mixed with Noritake Super Porcelain EX-3 UNIVERSAL PASTE OPAQUE to customize the shade or may be applied alone for minor modifications.

| UNIVERSAL P. O. MODIFIER KIT (24 g) #102-0120EU | | |
|---|----------|---------|
| WHITE | 3 g each | |
| YELLOW | 3 g each | |
| BLUE | 3 g each | |
| GRAY | 3 g each | |
| PINK | 3 g each | |
| ORANGE | 3 g each | |
| EARTH BROWN | 3 g each | |
| REDISH BROWN | 3 g each | |
| MODIFIER BRUSH | | 1 piece |

PASTE OPAQUE NP BONDER

Opaque Bonding Agent for Non-precious Metal

This new reliable bonder is optimized for secure bonding between porcelain and metal frameworks made of non-precious alloys. Besides being capable of reducing the black lines that can occur at the margins of metal frameworks, it is also effective in reducing the likelihood of yellow or green discoloration of the porcelain after baking.

| PASTE OPAQUE NP BONDER (6 g) #102-4532EU | |
|--|-----|
| OPAQUE | 6 g |

nCOLOR BODY KIT

Full Kit excluding Opaque (nCOLOR)

nCOLOR BODY KIT is an ideal assortment of basic shades excluding opaque. The purchase of PASTE OPAQUE or UNIVERSAL PASTE OPAQUE is highly recommended.

| nCOLOR BODY KIT (400 g) #102-0140EU | | |
|-------------------------------------|-----------|-----------|
| BODY | 10 g each | 16 colors |
| ENAMEL | 10 g each | 3 colors |
| TRANSLUCENT | 10 g each | 4 colors |
| CERVICAL | 10 g each | 4 colors |
| MODIFIER | 10 g each | 11 colors |
| ADD-ON | 10 g each | 2 colors |
| FORMING LIQUID | 20 ml | 1 bottle |

VALUE SHADE BODY KIT

All 26 Shades of Value Shade Body Assortment

VALUE SHADE BODY KIT is an ideal assortment of basic shades excluding opaque. The purchase of PASTE OPAQUE or UNIVERSAL PASTE OPAQUE is highly recommended.

| VALUE SHADE BODY KIT (260 g) #102-0150EU | | | |
|--|--------|-------|-------|
| BODY: | 1110B | 1120B | 2015B |
| 10 g each | 2025B | 2110B | 2120B |
| | 2130B | 2215B | 2225B |
| | 3015B | 3025B | 3110B |
| | 3120B | 3130B | 3215B |
| | 3225B | 4015B | 4025B |
| | 4110B | 4120B | 4130B |
| | 4215B | 4225B | 5110B |
| | 5120B | 5130B | NW0B |
| | NW0.5B | | |



MARGIN PORCELAIN KIT

Margin Porcelain Assortment

Designed for porcelain-fused-to-metal crowns with porcelain margins, MARGIN PORCELAIN KIT is used in combination with Noritake's layering porcelains. Its low shrinkage simplifies the development of precise marginal fit. It is specially formulated with the appropriate balance between reflection and transmission to mask the metal while possessing sufficient translucency for a natural appearance.

| MARGIN PORCELAIN KIT (150 g) #102-0160EU | | |
|--|-----------|-----------|
| BASIC SHADE | 10 g each | 13 colors |
| POWDER FOR DILUTION | 10 g | 1 color |
| POWDER FOR RETOUCHING | 10 g | 1 color |

ENAMEL/TRANSLUCENT COMPLETE KIT
All Shades of Noritake Super Porcelain EX-3
Enamel, Translucent and CCV

This kit contains newly developed highly translucent and opal porcelain for an even easier, true to life fabrication of natural teeth, in order to reproduce complexities in shades and texture of natural enamel in the best possible way. It consists of extremely fine particles and precisely reproduces the properties of natural opalescence and translucency.

| E/T COMPLETE KIT (140 g) | | #102-0170EU |
|---------------------------------|-----------|--------------------|
| ENAMEL | 10 g each | 5 colors |
| TRANSLUCENT | 10 g each | 5 colors |
| CERVICAL | 10 g each | 4 colors |

LUSTER CCV KIT
Luster & CCV Shades including
Aqua Blue & Super Gray

Noritake Super Porcelain EX-3 LUSTER PORCELAIN is designed to replicate the exact subtle complexities in shades and texture of natural enamel. It contains extremely fine particles, and it accurately reproduces the natural opalescence of enamel. CCV PORCELAIN is a high translucency cervical porcelain. It is very effective when applying on cervical area.

| LUSTER CCV KIT (160 g) | | | | #102-0180EU |
|-------------------------------|-----------------|---------------|------------|--------------------|
| 10 g each | LT0 | LT1 | T BLUE | |
| | AQUA | AQUA | LT | |
| | BLUE 1 | BLUE 2 | NATURAL | |
| | LT SUPER GRAY | CREAMY ENAMEL | SUN BRIGHT | |
| | INCISAL AUREOLA | CREAMY WHITE | LT YELLOW | |
| | CCV-1 | CCV-2 | CCV-3 | |
| | CCV-4 | | | |

LUSTER COMPLETE KIT
All Shades of Noritake Super Porcelain EX-3
Luster

LUSTER PORCELAIN is designed to replicate the exact subtle complexities in shades and texture of natural enamel. It contains extremely fine particles, and it accurately reproduces the natural opalescence of enamel.

| LUSTER COMPLETE KIT (190 g) | | #102-0190EU |
|------------------------------------|-----------|--------------------|
| LUSTER | 10 g each | 19 colors |

OPACIOUS BODY COMPLETE KIT
Opacious Body Assortment including OB Pale Pink

Noritake Super Porcelain EX-3 OPACIOUS BODY PORCELAIN is formulated with an intermediate degree of translucency, between that of opaque and body porcelain. It is useful in a variety of situations, for example, in the cervical areas of pontics where thick body porcelain becomes too translucent. OPACIOUS BODY COMPLETE KIT includes OB PALE PINK as new line-ups.

| O. B. COMPLETE KIT (200 g) | | | #102-0200EU |
|-----------------------------------|-----------|-----------|--------------------|
| BASIC SHADE | 10 g each | 17 colors | |
| OB MODIFIER | 10 g each | 3 colors | |

VALUE SHADE OPACIOUS BODY KIT
All 26 Shades of Value Shade Opacious Body
Assortment

VALUE SHADE OPACIOUS BODY KIT is formulated with an intermediate degree of translucency, between that of opaque and body porcelain. It is useful in a variety of situations, for example, in the cervical areas of pontics where thick body porcelain becomes too translucent.

| VALUE SHADE OPACIOUS BODY KIT (260 g) | | | | #102-0210EU |
|--|--------|--------|---------|--------------------|
| OPACIOUS | OB1110 | OB1120 | OB2015 | |
| BODY: | OB2025 | OB2110 | OB2120 | |
| 10 g each | OB2130 | OB2215 | OB2225 | |
| | OB3015 | OB3025 | OB3110, | |
| | OB3120 | OB3130 | OB3125 | |
| | OB3225 | OB4015 | OB4025 | |
| | OB4110 | OB4120 | OB4130 | |
| | OB4215 | OB4225 | OB5110 | |
| | OB5120 | OB5130 | | |

EXTERNAL STAIN (ES) KIT
Complete Assortment of External Stain

SUPER PORCELAIN EXTERNAL STAIN is designed to be used with the Noritake Super Porcelain EX-3 product line. Staining can reproduce the complex color shades observed in natural teeth. Noritake Super Porcelain EX-3 EXTERNAL STAIN possesses thermal expansion properties identical to Noritake Super Porcelain EX-3. Consequently, when used in combination, there is minimal risk of separation even after long term intra-oral function.

| EXTERNAL STAIN KIT (73 g) | | #102-0220EU |
|----------------------------------|-----------|--------------------|
| PURE WHITE | 3 g each | |
| GRAY | 3 g each | |
| BLACK | 3 g each | |
| BLUE | 3 g each | |
| GREEN 1 | 3 g each | |
| GREEN 2 | 3 g each | |
| YELLOW | 3 g each | |
| ORANGE 1 | 3 g each | |
| ORANGE 2 | 3 g each | |
| CV-1 | 3 g each | |
| CV-2 | 3 g each | |
| CV-3 | 3 g each | |
| EARTH BROWN | 3 g each | |
| REDDISH BROWN | 3 g each | |
| SALMON PINK | 3 g each | |
| PINK | 3 g each | |
| RED | 3 g each | |
| A+ | 3 g each | |
| B+ | 3 g each | |
| C+ | 3 g each | |
| D+ | 3 g each | |
| GLAZE | 10 g each | 1 bottle |
| ES LIQUID | 10 ml | 1 bottle |

**INTERNAL STAIN (IS)
COMPLETE KIT**
Complete Assortment of Internal Stain
including Fluoro

Developed in collaboration with the renowned ceramist Mr. Aoshima, INTERNAL STAIN makes the innovative "Internal Staining Technique" practical for everyday laboratory use. The internal staining technique is the best method to replicate many of the most intricate patterns of shade variation found in natural teeth. IS FLUORO is added to the kit.

INTERNAL STAIN COMPLETE KIT (57 g) #102-0240EU

| | | |
|-------------------|----------|----------|
| INCISAL BLUE 1 | 3 g each | |
| INCISAL BLUE 2 | 3 g each | |
| MAMELON ORANGE 1 | 3 g each | |
| MAMELON ORANGE 2 | 3 g each | |
| REDDISH BROWN | 3 g each | |
| EARTH BROWN | 3 g each | |
| CERVICAL 1 | 3 g each | |
| CERVICAL 2 | 3 g each | |
| CERVICAL 3 | 3 g each | |
| WHITE | 3 g each | |
| SALMON PINK | 3 g each | |
| RED | 3 g each | |
| GRAY | 3 g each | |
| FLUORO | 3 g each | |
| A+ | 3 g each | |
| B+ | 3 g each | |
| C+ | 3 g each | |
| D+ | 3 g each | |
| BRIGHT (DILUTION) | 3 g each | 1 bottle |
| IES LIQUID | 10 ml | 1 bottle |

ESTHETIC WHITE KIT
Assortment of Noritake Esthetic White (EW)
Shades

ESTHETIC WHITE KIT is for creating whiter shades rather than NW shades, which is not only pure bleaching shades but also natural and beautiful white shades.

ESTHETIC WHITE KIT (102 g) #102-0270EU

| | | | | |
|-----------|----------|----------|----------|------|
| 6 g each | POEWO | POEW | EWOOB | EWOB |
| 10 g each | EWB | EWYB | ELT1 | ELT2 |
| | ELT3 | SILKY E1 | SILKY E2 | |
| 1 piece | PO BRUSH | | | |

TISSUE KIT
Assortment of 7 Tissue Colors

TISSUE KIT is a complete kit of 7 Noritake Tissue colors. All colors are very useful for implant work.

TISSUE KIT (70 g) #102-0280EU

| | | |
|--------|-----------|------------|
| TISSUE | 10 g each | TISSUE 5-7 |
| | 10 g each | TISSUE 1-4 |



ADDMATE KIT
Assortment of Repair Porcelains

ADDMATE PORCELAIN is designed for the modification of porcelain-fused-to-metal restorations in the final stages of completion. It requires a firing temperature of only 660 - 700 °C (220 - 1292 °F). It is very well suited for minor morphological corrections and repairing of minor defects. Additionally, it may also be used for the delicate task of modifying a post-soldered fixed partial denture. ADDMATE is not compatible with porcelains designed to be used with titanium-based alloys. However, ADDMATE is highly recommended for latter-stage modifications of any other porcelain whose CTE lies between 12.0 and 13.0 x 10 (-6) °C.

ADDMATE KIT #102-0250EU

| | |
|------------------------|-----------|
| LIGHT OPAQUE | 10 g each |
| DARK OPAQUE | 10 g each |
| LIGHT BODY | 10 g each |
| DARK BODY | 10 g each |
| ENAMEL | 10 g each |
| TRANSLUCENT | 10 g each |
| ADDMATE FORMING LIQUID | 1 bottle |

SPEED ENAMEL
Developed for 2 Layers Build-up Technique

Noritake Super Porcelain EX-3 Speed Enamel is a new item especially developed for 2 layers build-up technique. Compared with the conventional enamel, Speed Enamel has a beautiful opalescent effect. The aesthetic restoration can be obtained easily with a simple application method. It is suitable to not only aesthetic work but also mass-production. Start your simple and beautiful work with Speed Enamel NOW!

SPEED ENAMEL

| | | |
|----|-------|-------------|
| S1 | 10 g | #102-2441EU |
| S1 | 50 g | #102-2442EU |
| S1 | 200 g | #102-2443EU |
| S2 | 10 g | #102-2451EU |
| S2 | 50 g | #102-2452EU |
| S2 | 200 g | #102-2453EU |
| S3 | 10 g | #102-2461EU |
| S3 | 50 g | #102-2462EU |
| S3 | 200 g | #102-2463EU |
| S4 | 10 g | #102-2471EU |
| S4 | 50 g | #102-2472EU |
| S4 | 200 g | #102-2473EU |

SCREENING PORCELAIN KIT
Assortment of Masking Porcelains for PLV & PJC

SCREENING PORCELAIN is to be used in combination with Noritake Super Porcelain EX-3 for making porcelain laminate veneers, all ceramic inlays and onlays and porcelain jacket crowns. The kit contains two basic types of material to neutralize the effects of discolored dentin: 1) masking porcelain to achieve high value, 2) complementary colors to achieve high translucency. The choice is yours. NWOG and NWO.5G are also available as individuals to create whitened shades.

SCREENING PORCELAIN KIT #106-0010EU

| | | |
|---------------------|-----------|-----------|
| SCREENING COLOR | 10 g each | 10 colors |
| SCREENING MODIFIER | 10 g each | 3 colors |
| COMPLEMENTARY COLOR | 10 g each | 4 colors |
| FORMING LIQUID | 20 ml | 1 bottle |



LAB COMPOSITES

ESTENIA™ C & B is a polymer-based crown and bridge material for creation of facing cast crowns, facing cast bridges, jacket crowns, inlays, onlays and bridges with frameworks.



ESTENIA™ C & B

ESTENIA™ C&B, the advanced material for the preparation of crowns and bridges, is one of a new class of materials, the hybrid ceramics. Hybrid ceramics are advanced composite materials with high reinforcement resistance, which is the result of the loading of a resin matrix containing a micro filler (particle size 2 µm) with a high proportion of nano filler particles (particle size 2 nm). Thanks to the high filler substance proportion of 92% by weight (82% by volume), ESTENIA™ C&B has especially high density, which is achieved by a special filler surface treatment technique. This gives a highly homogeneous structure with excellent physical properties which is particularly suitable for posterior and anterior tooth restorations. EG Fiber is a fiber framework material for use in bridge spans, consisting of monomers, surface-treated glass-fiber, and surface-treated micro filler. The indication enables the bridge used framework material by using an exclusive glass fiber frame EG Fiber. ESTENIA™ C&B thus provides an easy-to-use aesthetic alternative to ceramic and metal crowns.

IN SHORT:

- High-filled hybrid ceramic (filler content 92 wt %, 82 vol %), only one in the world with physical properties similar to ceramic
- Excellent physical properties, and offering aesthetic restorations

ESTENIA C & B BODY OPAQUE

| | | |
|--------|--------|----------|
| ONW0.5 | 2.0 ml | #2221-EU |
| OA1 | 2.0 ml | #2222-EU |
| OA2 | 2.0 ml | #2223-EU |
| OA3 | 2.0 ml | #2224-EU |
| OA3.5 | 2.0 ml | #2225-EU |
| OA4 | 2.0 ml | #2226-EU |
| ONW0 | 2.0 ml | #2227-EU |
| OB1 | 2.0 ml | #2228-EU |
| OB2 | 2.0 ml | #2229-EU |
| OB3 | 2.0 ml | #2230-EU |
| OB4 | 2.0 ml | #2231-EU |
| OC1 | 2.0 ml | #2232-EU |
| OC2 | 2.0 ml | #2233-EU |
| OC3 | 2.0 ml | #2234-EU |
| OC4 | 2.0 ml | #2235-EU |
| OD2 | 2.0 ml | #2236-EU |
| OD3 | 2.0 ml | #2237-EU |
| OD4 | 2.0 ml | #2238-EU |
| ONP1.5 | 2.0 ml | #2239-EU |
| ONP2.5 | 2.0 ml | #2240-EU |

ESTENIA CERVICAL OPAQUE

| | | |
|-----|--------|----------|
| CO1 | 2.0 ml | #2241-EU |
| CO2 | 2.0 ml | #2242-EU |
| CO3 | 2.0 ml | #2243-EU |
| CO4 | 2.0 ml | #2244-EU |
| CO5 | 2.0 ml | #2245-EU |

ESTENIA C & B OPAQUE PRIMER

| | | |
|--|--------|----------|
| | 9.0 ml | #2250-EU |
|--|--------|----------|

ESTENIA C & B GINGIVAL

| | | |
|----|--------------|----------|
| P1 | 6.4 g/2.6 ml | #2261-EU |
| P2 | 6.4 g/2.6 ml | #2262-EU |
| P3 | 6.4 g/2.6 ml | #2263-EU |

ESTENIA C & B TRANSPARENT

| | | |
|-----|--------------|----------|
| T0 | 6.4 g/2.6 ml | #2270-EU |
| T1 | 6.4 g/2.6 ml | #2271-EU |
| T2 | 6.4 g/2.6 ml | #2272-EU |
| TLV | 6.4 g/2.6 ml | #2273-EU |

ESTENIA C & B ENAMEL

| | | |
|----|--------------|----------|
| E0 | 6.4 g/2.6 ml | #2280-EU |
| E1 | 6.4 g/2.6 ml | #2281-EU |
| E2 | 6.4 g/2.6 ml | #2282-EU |
| E3 | 6.4 g/2.6 ml | #2283-EU |
| E4 | 6.4 g/2.6 ml | #2284-EU |

ESTENIA C & B DENTIN

| | | |
|--------|--------------|----------|
| DNW0.5 | 6.4 g/2.6 ml | #2301-EU |
| DA1 | 6.4 g/2.6 ml | #2302-EU |
| DA2 | 6.4 g/2.6 ml | #2303-EU |
| DA3 | 6.4 g/2.6 ml | #2304-EU |
| DA3.5 | 6.4 g/2.6 ml | #2305-EU |
| DA4 | 6.4 g/2.6 ml | #2306-EU |
| DNW0 | 6.4 g/2.6 ml | #2307-EU |
| DB1 | 6.4 g/2.6 ml | #2308-EU |
| DB2 | 6.4 g/2.6 ml | #2309-EU |
| DB3 | 6.4 g/2.6 ml | #2310-EU |
| DB4 | 6.4 g/2.6 ml | #2311-EU |
| DC1 | 6.4 g/2.6 ml | #2312-EU |
| DC2 | 6.4 g/2.6 ml | #2313-EU |
| DC3 | 6.4 g/2.6 ml | #2314-EU |
| DC4 | 6.4 g/2.6 ml | #2315-EU |
| DD2 | 6.4 g/2.6 ml | #2316-EU |
| DD3 | 6.4 g/2.6 ml | #2317-EU |
| DD4 | 6.4 g/2.6 ml | #2318-EU |
| DNP1.5 | 6.4 g/2.6 ml | #2319-EU |
| DNP2.5 | 6.4 g/2.6 ml | #2320-EU |



ESTENIA C & B CERVICAL

| | | |
|-----|--------------|----------|
| CE1 | 6.4 g/2.6 ml | #2361-EU |
| CE2 | 6.4 g/2.6 ml | #2362-EU |
| CE3 | 6.4 g/2.6 ml | #2363-EU |
| CE4 | 6.4 g/2.6 ml | #2364-EU |
| CE5 | 6.4 g/2.6 ml | #2365-EU |
| CE6 | 6.4 g/2.6 ml | #2366-EU |
| CE7 | 6.4 g/2.6 ml | #2367-EU |
| CE8 | 6.4 g/2.6 ml | #2368-EU |

ESTENIA C & B CERVICAL TRANSPARENT

| | | |
|-----|--------------|----------|
| CT1 | 6.4 g/2.6 ml | #2371-EU |
| CT2 | 6.4 g/2.6 ml | #2372-EU |
| CT3 | 6.4 g/2.6 ml | #2373-EU |
| CT4 | 6.4 g/2.6 ml | #2374-EU |
| CT5 | 6.4 g/2.6 ml | #2375-EU |
| CT6 | 6.4 g/2.6 ml | #2376-EU |

ESTENIA C & B EG FIBER

| | | |
|-----------|----------------|----------|
| Anterior | 2 pieces/12 cm | #2401-EU |
| Posterior | 2 pieces/12 cm | #2402-EU |

ESTENIA C & B EG FLOW

| | | |
|--|--------|----------|
| | 1,0 ml | #2403-EU |
|--|--------|----------|

ESTENIA C & B EG CORE

| | | |
|--|----------|----------|
| | 6 pieces | #2404-EU |
|--|----------|----------|

ESTENIA C & B EG FIBER SET

| | | |
|--|---------|----------|
| | 1 piece | #2405-EU |
|--|---------|----------|

LAB MATERIALS

The flow of Noritake SUPER ROCK EX is superior to conventional products and its thixotropic properties facilitate handling.

NORI-VEST series are refractory die material for porcelain inlays, onlays and all ceramic crowns.



SUPER ROCK EX

The flow of Noritake SUPER ROCK EX is superior to conventional products and its thixotropic properties facilitate handling. It easily fills and reproduces the finest details of the impression. Two colors, BROWN and NEUTRAL GRAY, are available.

SUPER ROCK EX

| | | |
|--------------|----------|-------------|
| BROWN | 3 kg/box | #318-0015EU |
| NEUTRAL GRAY | 3 kg/box | #318-0025EU |



NORI-VEST

NORI-VEST series are refractory die material for porcelain inlays, onlays and all ceramic crowns.

- It has a sufficient strength to withstand easily baking and build-up.
- NORI-VEST is easy to remove after the porcelain is baked, reducing the risk of breaking the inlays.
- The mixed material flows easily, filling all the details in the impression.
- The fit is excellent.

NORI-VEST

| | | |
|--------------|------------------|-------------|
| ZIRCONIA SET | 30 g x 33/240 ml | #320-0020EU |
| SET | 30 g x 33/200ml | #320-0070EU |



CERAMIC ACCESSORIES

COLOR GUIDE

COLOR GUIDE is a unique color guide for all Noritake porcelain. The shape is designed with original crescent shape. This color guide makes ceramist work very easy and get correct shade image, so that ceramists can create beautiful porcelain work with Noritake porcelains.

COLOR GUIDE

| | |
|--|-------------|
| COLOR GUIDE 121 EX-3 N-COLOR POWDER OPAQUE | #211-2019EU |
| COLOR GUIDE 122 EX-3 PASTE OPAQUE | #211-2029EU |
| COLOR GUIDE 123 EX-3 N-COLOR PASTE OPAQUE | #211-2039EU |
| COLOR GUIDE 124 EX-3 PASTE OPAQUE MODIFIER | #211-2049EU |
| COLOR GUIDE 125 EX-3 MARGIN | #211-2059EU |
| COLOR GUIDE 126 EX-3 OPACIOUS BODY | #211-2069EU |
| COLOR GUIDE 127 EX-3 BODY | #211-2079EU |
| COLOR GUIDE 128 EX-3 N-COLOR BODY | #211-2089EU |
| COLOR GUIDE 129 EX-3 ENAMEL & TRANSLUCENT | #211-2099EU |
| COLOR GUIDE 130 EX-3 LUSTER | #211-2109EU |
| COLOR GUIDE 131 EX-3 MODIFIER | #211-2119EU |
| COLOR GUIDE 132 EX-3 UNIVERSAL PASTE OPAQUE | #211-2129EU |
| COLOR GUIDE 133 EX-3 UNIVERSAL PASTE OPAQUE MODIFIER | #211-2139EU |
| COLOR GUIDE 134 EX-3 VALUE SHADE BODY | #211-2149EU |
| COLOR GUIDE 135 EX-3 VALUE SHADE OPACIOUS BODY | #211-2159EU |
| COLOR GUIDE 1005 EX-3 COMPLETE / CONVENTIONAL | #211-2169EU |
| COLOR GUIDE 1006 EX-3 COMPLETE / N-COLOR | #211-2179EU |
| COLOR GUIDE 1007 EX-3 COMPLETE / POWDER OPAQUE | #211-2189EU |
| COLOR GUIDE 421 CZR SHADE BASE | #211-2299EU |
| COLOR GUIDE 422 CZR MARGIN | #211-2309EU |
| COLOR GUIDE 423 CZR OPACIOUS BODY | #211-2319EU |
| COLOR GUIDE 424 CZR BODY | #211-2329EU |
| COLOR GUIDE 425 CZR ENAMEL & TRANSLUCENT | #211-2339EU |
| COLOR GUIDE 426 CZR LUSTER | #211-2349EU |
| COLOR GUIDE 427 CZR MODIFIER | #211-2359EU |
| COLOR GUIDE 428 CZR VALUE SHADE BODY | #211-2369EU |
| COLOR GUIDE 429 CZR VALUE SHADE OPACIOUS BODY | #211-2379EU |
| COLOR GUIDE CZR FC PASTE STAIN | #211-2389EU |
| COLOR GUIDE 4002 CZR COMPLETE | #211-2399EU |
| COLOR GUIDE 521 CZR PRESS LF EW BODY & H-BODY | #211-2409EU |
| COLOR GUIDE 522 CZR PRESS LF ENAMEL & TRANSLUCENT | #211-2419EU |
| COLOR GUIDE 523 CZR PRESS LF LUSTER | #211-2429EU |
| COLOR GUIDE 524 CZR PRESS LF MODIFIER | #211-2439EU |
| COLOR GUIDE CZR PRESS LF SHADE BASE STAIN | #211-2449EU |

COLOR GUIDE

| | |
|--|-------------|
| COLOR GUIDE CZR PRESS LF SHADE BASE STAIN MODIFIER | #211-2459EU |
| COLOR GUIDE 5002 CZR PRESS LF COMPLETE | #211-2469EU |
| COLOR GUIDE 703 SCREENING PORCELAIN | #211-2549EU |
| ES COLOR GUIDE | #211-0769EU |
| IS COLOR GUIDE | #211-0779EU |

SHADE GUIDE

The Noritake SHADE GUIDE has been specifically designed to match precisely with Noritake Porcelains. It will make shade taking from natural teeth very easy.

SHADE GUIDE

| | |
|----------------------|------------|
| NORITAKE SHADE GUIDE | 211-1189EU |
|----------------------|------------|



ESTHETIC WHITE SHADE GUIDE

ESTHETIC WHITE SHADE GUIDE is a shade guide for new bleaching shades. Esthetic white shades are even whiter than NW shades.

| | |
|----------------------------|------------|
| ESTHETIC WHITE SHADE GUIDE | 211-1199EU |
|----------------------------|------------|



PEARL SURFACE

PEARL SURFACE is a porcelain polishing material for use after the final recontouring. It adds a natural luster to the surface without altering the subtleties in the texture. It is also suitable for polishing hard resin and denture-base acrylic resin.

PEARL SURFACE

| | | |
|--------------------------|--------|-------------|
| PEARL SURFACE SET | | #221-0720EU |
| PEARL SURFACE F | 200 g | #221-0739EU |
| PEARL SURFACE C | 1 pc | #221-0749EU |
| PEARL SURFACE FELT WHEEL | 6 pcs. | #221-0759EU |
| PEARL SURFACE Z | 20 g | #221-0769EU |

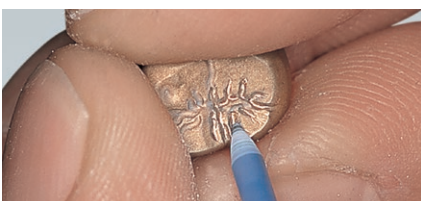


MEISTER FINISH

Minor adjustments on porcelain margins. Grooves in occlusal metal. Inside surface of PFMs and full cast metal crowns. The surface of the access hole of an implant supported crown. The finishing line of a denture framework . The tooth-side-surface of rests.

MEISTER FINISH

| | | |
|------------------------------|-------|-------------|
| MEISTER FINISH ASSORT SET | 3 pcs | #221-0010EU |
| MEISTER FINISH C (BROWN) SET | 3 pcs | #221-0020EU |
| MEISTER FINISH F (RED) SET | 3 pcs | #221-0030EU |
| MEISTER FINISH M (BLUE) SET | 3 pcs | #221-0040EU |
| MEISTER FINISH C (BROWN) | | #221-0059EU |
| MEISTER FINISH F (RED) | | #221-0069EU |
| MEISTER FINISH M (BLUE) | | #221-0079EU |



INTERNAL LIVE STAIN PALETTE

A unique design by renowned ceramist, Mr. Aoshima, offered for the specialist, with a fan-shaped configuration which is very convenient.

I.L.S. PALETTE

| | | |
|----------------|--|-------------|
| I.L.S. PALETTE | | #226-0479EU |
|----------------|--|-------------|

PORCELAIN PALETTE

| | | |
|-----------------------------|------|-------------|
| PASTE OPAQUE BRUSH | 1 pc | #226-0339EU |
| PASTE OPAQUE MODIFIER BRUSH | 1 pc | #226-0349EU |

PORCELAIN MAT

The MAT, made from alumina / ceramic fiber, is designed to hold all-ceramic crowns and porcelain laminate veneers during baking.

PORCELAIN MAT

| | | |
|----------------------|--------|-------------|
| PORCELAIN MAT SQUARE | 2 pcs | #126-0429EU |
| PORCELAIN MAT ROUND | 2 pcs | #126-0439EU |
| PORCELAIN MAT PINS | 10 pcs | #226-0449EU |



NORITAKE MAGIC

MAGIC FORMER is a dry-and-set type Margin Porcelain forming liquid. It has strong adhesive properties with opaque porcelain and becomes quite hard when it is dried. It is easy to remove the coping from the die without disturbing the margin porcelain. MAGIC SEPARATOR is a pen-type porcelain separator. It is used to separate porcelain from the model material in margin porcelain area, on the gingival surface of pontics and in adjacent contact area.

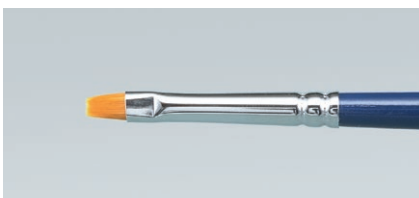
NORITAKE MAGIC

| | | |
|--------------------------|--------|-------------|
| NORITAKE MAGIC SEPARATOR | 3.5 ml | #926-0289EU |
| NORITAKE MAGIC FORMER | 20 ml | #926-0299EU |



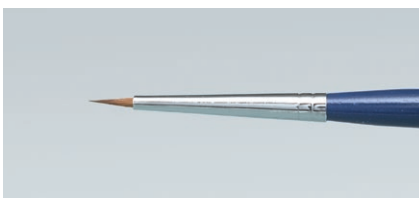
PASTE OPAQUE BRUSH

| | | |
|--------------------|------|-------------|
| PASTE OPAQUE BRUSH | 1 pc | #226-0339EU |
|--------------------|------|-------------|



PASTE OPAQUE MODIFIER BRUSH

| | | |
|-----------------------------|------|-------------|
| PASTE OPAQUE MODIFIER BRUSH | 1 pc | #226-0349EU |
|-----------------------------|------|-------------|



TATSUJIN BRUSH

| | |
|-------------------|-------------|
| TATSUJIN BRUSH #B | #226-0379EU |
| TATSUJIN BRUSH #F | #226-0389EU |
| TATSUJIN BRUSH #S | #226-0409EU |



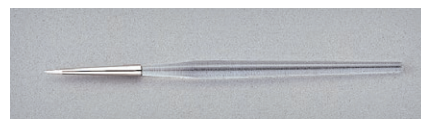
COMPOSITE ACCESSORIES

ESTENIA C & B

| | | |
|------------------------------------|---|----------|
| ESTENIA C & B Modeling Liquid | 6.0 ml | #2201-EU |
| ESTENIA C & B Add-on Primer | 6.0 ml | #2202-EU |
| ESTENIA C & B Air Barrier Paste | 10 ml | #2203-EU |
| ESTENIA C & B CR Sep III | 20 ml | #2204-EU |
| ESTENIA C & B Polishing Paste 10 g | 10 g | #2205-EU |
| ESTENIA C & B Polishing Brush | 12 pcs | #2207-EU |
| ESTENIA C & B Felt Wheel | 12 pcs | #2208-EU |
| ESTENIA C & B Polishing Set | 10 g polishing paste, 12 pcs brush, wheel | #2209-EU |
| ESTENIA C & B Instrument No.1 | 1 pc | #1809-EU |
| ESTENIA C & B Instrument No.2 | 1 pc | #1810-EU |
| ESTENIA C & B Instrument No.3 | 1 pc | #1811-EU |

BRUSHES

| | |
|---|---------|
| Brush, small (transparent) | #901-EU |
| Brush, small (straight flat, transparent) | #921-EU |



DESCRIPTION & GUARANTEE

GUARANTEE

DESCRIPTION

Please read carefully the relevant instructions for use before utilizing these products. KATANA™, Cerabien™, EX-3, CLEARFIL™, CLEARFIL MAJESTY™, PANAVIA™, OXYGUARD™ and TEETHMATE™ are trademarks of the company Kuraray Noritake Dental Inc. Vita™ is a trademark of the company VITA Zahnfabrik. The colour descriptions are based on the best comparison.

GUARANTEE

All of the data contained here are based on actual measurements by Kuraray Noritake Dental Inc. All of the information shown here is given to the best of our knowledge, but without the assumption of any guarantees. Kuraray Noritake Dental Inc. hereby declares that it will replace any products verified to be defective. Neither Kuraray Noritake Dental Inc. nor the distributor assume any liability for losses or damage, including direct, subsequent, and single losses, which result from the application or use or inability to use these products. The user must make sure that the product is suitable for the intended use before using it; by using the product, the user assumes responsibility for any and all risks and obligations.

DISTRIBUTOR

Orders and deliveries from qualified specialist outlets.
Please contact our distributor / dealer in your country:

Stamp:







EU Importer

Kuraray Europe GmbH

Philipp-Reis-Strasse 4,
65795 Hattersheim am Main, Germany
Phone +49 (0)69 305 35 835
Fax +49 (0)69 305 98 35 835
www.kuraraynoritake.eu
centralmarketing@kuraray.com



Kuraray Noritake Dental Inc.

300 Higashiyama, Miyoshi-cho, Miyoshi, Aichi 470-0293, Japan
Website www.kuraraynoritake.com

