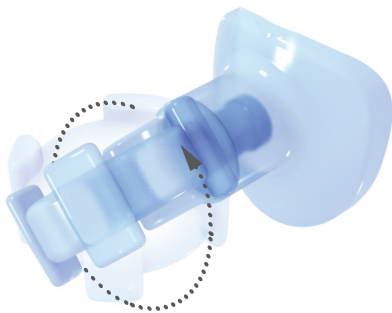


360°
cervical matrix

360° Cervical Matrices are available at www.trident.com, or by calling our customer services team, or by contacting your regular supplier of Trident products.



*Rotatable handle and
three grip positions
for easy access*

360°
cervical matrix



 **trident**

More great products from Trident

To find out more about any of our products, call our customer services team or visit our website: www.trident.com

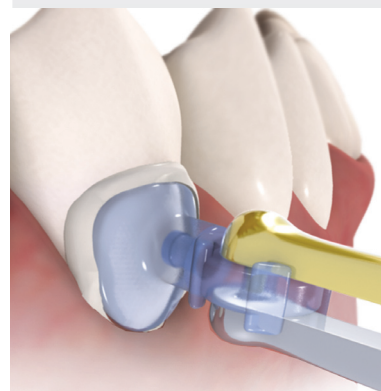
US: 1-800-811-3949 **NZ:** 0800 TRIDENT
CA: 1-866-316-9007 **AU:** 1800-350-421
UK: 0800-311-2097 **INT:** +64 7 549 5612

360 Cervical Matrix Quick Guide



3 2 0 0 4 5

360°
cervical matrix



Quick Guide

 **trident**

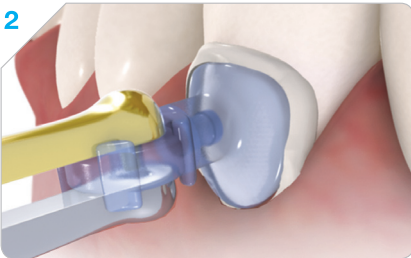
360° Cervical Matrix Quick Guide



1

Load selected matrix on Pin-Tweezers

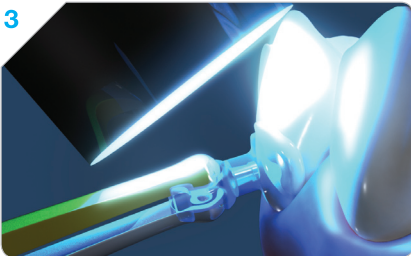
Engage the selected matrix (small, medium or large) in Pin-Tweezers and find the correct insertion angle by rotating the matrix to gain easy access to the prepped cavity. Squeeze tweezers at the back to open and near the tip to grip.



2

Fill cavity and place matrix

Use your preferred technique for incremental composite layering, slightly overfilling with the final, unset increment. Gently slide the matrix over the restoration, sub-gingivally if necessary. Start with the matrix angled slightly towards the gingival margin to force excess composite supra-gingivally.



3

Light-cure and finish

Still holding the matrix in place with Pin-Tweezers, light-cure the final increment of composite through the matrix. Remove matrix and finish. A final light cure is recommended.

Tips and tricks

Squeeze matrix to shape

Pre-shape the matrix by squeezing the sides until it is slightly narrower than the tooth. Pressed on to the tooth before cavity prep it will expand and conform to the tooth contours.

Sub-gingival cavity

Use retraction cord if the cavity is sub-gingival to gain better access to the gingival margin and to control crevicular exudate.

Matrix swivels on two axes

The handle of the 360° Cervical Matrix has three angles of attachment to the Pin-Tweezers. Combined with the rotating matrix, this provides application angles for any restoration in the mouth, so even an upper second molar is easily reached with the 360° Cervical Matrix.

360°
cervical matrix