


**AFFINIS®**



THE ART OF  
IMPRESSIONS

**AFFINIS®** Perfect impressions

 **COLTENE**

**The Coltène/Whaledent dental group is active throughout the world in the development, manufacturing and distribution of high quality dental products. With manufacturing based in Europe and the USA and a global network of agencies and competent trading partners, we provide superior dental solutions.**

**Coltène/Whaledent Dental Group  
Headquarters – Altstätten,  
Switzerland.**



**Our modern AFFINIS production facilities.**



**All stages of development and production are scientifically monitored.**



# CONTENTS

---

**Page**      **6-7**    **The challenge of taking a perfect impression**

---

**Page**      **8-15**    **Advantages and solutions**

---

**Page**      **16-22**    **Techniques with AFFINIS®**

---

**Page**      **23-25**    **Material consistencies that meet your needs**

---

**Page**      **26-28**    **Application of AFFINIS®**

---

**Page**      **29**      **Trays and adhesives**

---

**Page**      **30**      **Bite registration**

---

**Page**      **31-33**    **Clinical report**

---

**Page**      **34-35**    **The product range**

---

7:0





# ALL THE ADVANTAGES OF AFFINIS<sup>®</sup> IMPRESSION MATERIALS AT A GLANCE:

- 1:0** Excellent flow properties in a moist environment
- 2:0** Ideal working time, optimal intraoral setting time
- 3:0** Excellent readability
- 4:0** Minimizes the risk of air entrapments and marginal distortions
- 5:0** 98.4% perfect reproduction of the marginal contours
- 6:0** First-ever autoclavable impressions
- 7:0** Maximum precision during model fabrication

# THE CHALLENGE OF TAKING A PERFECT IMPRESSION

**Scientific studies have consistently demonstrated that up to 90%\* of impressions are inaccurate.**

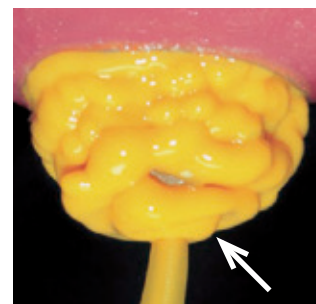
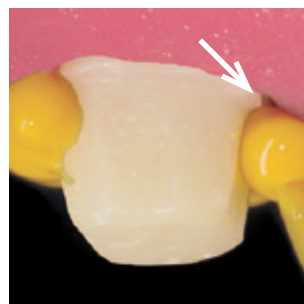
The key reasons behind many inaccurate impressions is due to poor surface affinity and inadequate flowability of an impression material onto moist tooth structure. These issues can cause air entrapments that can consequently lead to trapped air voids and distortions, which result in time-consuming remakes of the impression.

\*Statement from the videotape "The Perfect Impression" by Gordon J. Christensen, DDS, MSD, PhD.

## **Illustration of a material that is not self contouring**

*Poor affinity of the impression material to moist tooth structure can cause air entrapments.*

*Uneven leveling and thixotropy can result in inaccurate contours.*



## Surface affinity on moist dentin

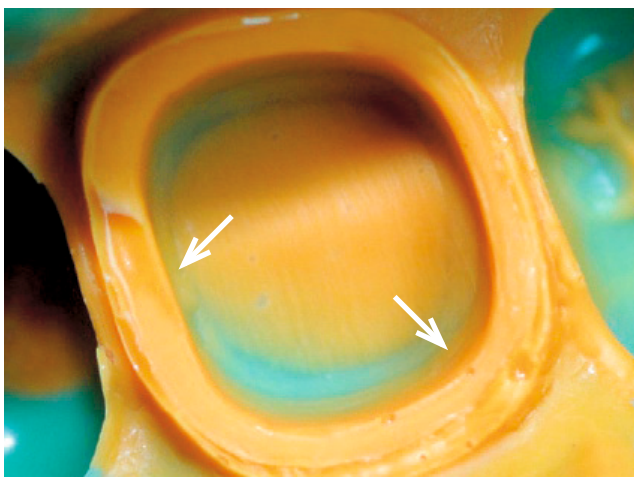
### Competitors' products



Defined amount of freshly mixed impression material on moist dentin – 10 seconds after application (internal data).



**The result:** Any impression material with missing surface affinity may lead to air entrapments and voids. This can result in cavities, defective points, margin distortions or distortions in the impression. The consequences are inaccuracies in dental restorations.



# ADVANTAGES AND SOLUTIONS

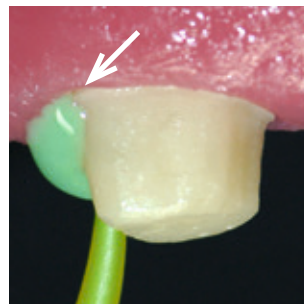
## 1:0 Excellent flow properties in a moist environment

### **98.4% perfect reproduction of marginal contours\* thanks to the optimal affinity of AFFINIS**

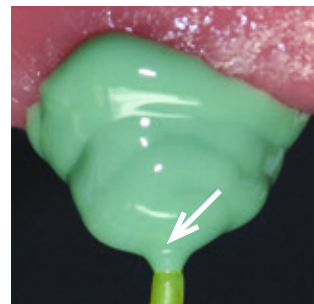
In general, the addition of surface-activated substances with conventional impression materials not only improves the wetting properties, but also restricts the flow. The material has a tendency to trap air voids. In contrast, AFFINIS provides ideal flow properties (self-contouring consistency) due to the structure-breaking properties of its active surfactant agent. The mixed material also delivers excellent stability and does not drip from the tooth.

\* The International Journal of Prosthodontics. May 2007, vol 20, nr. 3


*AFFINIS flows directly  
onto the tooth  
and into the sulcus.*



*AFFINIS does not drip.  
An ideal thixotropic balance  
between its self-contouring  
consistency and firmness.*

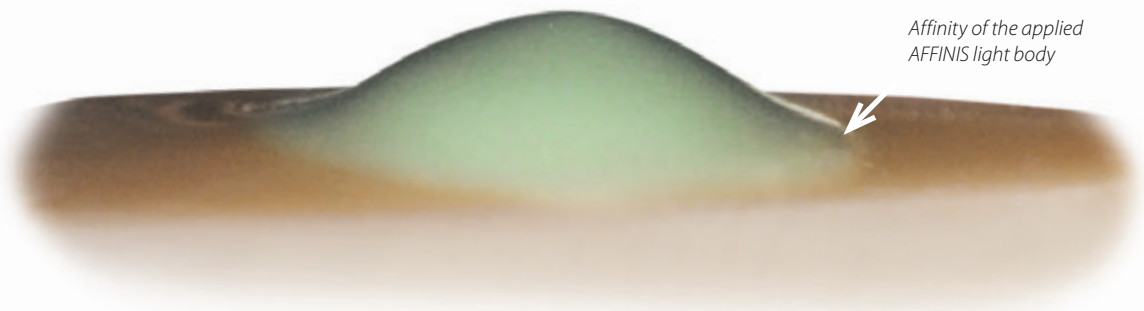






< 10°

AFFINIS®: Excellent wettability on moist tooth surfaces



*The self-contouring consistency and the highly active surfactant agent produces an innovative affinity to the moist tooth structure (internal photo).*

# ≤ 1 min

AFFINIS®: Optimal results with an ideal working time

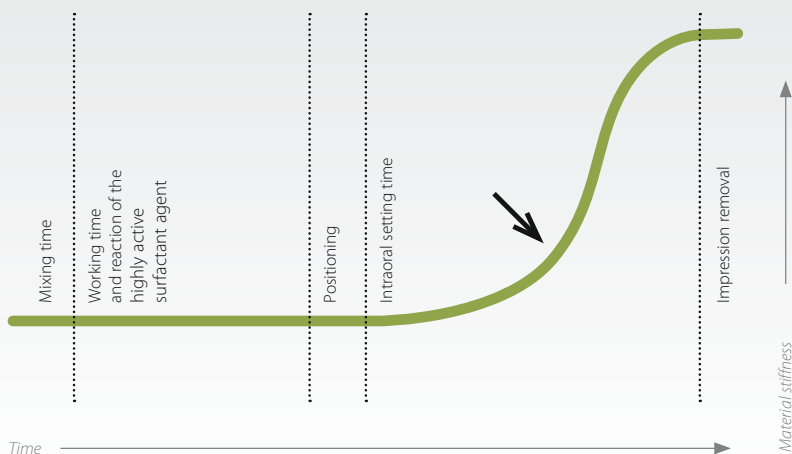
## 2:0 Ideal working time, optimal intraoral setting time

### Optimized setting properties

Thanks to the AFFINIS Snapset, AFFINIS materials offer variable application times up to one minute as well as a short intraoral setting time of  $\geq 2$  minutes (MonoBody  $\geq 2$  minutes 30 seconds).

Its generous amount of working time ensures for stress-free intraoral application of the material. Once the impression tray is seated, the setting process is accelerated due to its thermo-active formula. Its short intraoral reaction phase saves time and comforts the patient.

**AFFINIS Snapset** – High Snapset minimizes the risk of inaccuracies due to inadvertent movements (internal data)



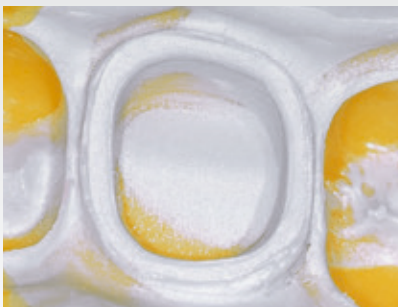
### 3:0 Excellent readability

#### Gold and silver pigmentation ensures outstanding readability

AFFINIS PRECIOUS features outstanding readability of the details. Its unique silver and gold pigmentation significantly reduces light diffusion and improves the visual perception of details. The quality of the impression can be easily and reliably checked thanks to its outstanding readability.



AFFINIS PRECIOUS  
light body



AFFINIS PRECIOUS  
regular body

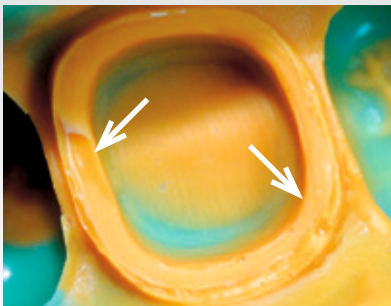


# Gold!

AFFINIS®PRECIOUS: The highest standard in impression taking

## 4:0 Minimizes the risk of air entrapment and marginal distortions

AFFINIS light body wash materials wet the tooth and gingiva extremely fast and effectively. Its distinct surface affinity and flowability virtually eliminates the risk of air voids and distortions.



### **Competitor**

*Air voids and distortions due to poor affinity during the working time.*



### **The difference – no air voids**

*AFFINIS regular body with AFFINIS heavy body. AFFINIS PRECIOUS regular body with AFFINIS heavy body.*



*(internal Data)*



# Min.

Air voids and distortions are reduced to a minimum with AFFINIS®



# 98,4 %

Perfect impressions

## 5:0 98,4% perfect reproduction of marginal contours

### Significant advancements for A-silicones

The introduction of AFFINIS with its innovative surface affinity and optimal flow properties is an important development towards the enhancement of A-silicone impression materials. With the proper preparation, tissue management and clean margins, these properties will deliver perfect impressions of the marginal contours and prepared teeth in virtually 100% of the cases.



#### Clinical results from the University of Innsbruck (Austria)

Clinical tests at the University of Innsbruck confirmed the high success rate achieved with AFFINIS. Only 1.6% of impressions showed defects or distortions in the marginal area. Dentists confirmed 98.4% perfect results using AFFINIS.

Preparations (1000 units)						
Inlays	Onlays	Crowns	Veneers	Implants	Posts	Adhesive Wings
201	156	394	96	76	65	12
Area (1000 units)						
Supragingival	Equigingival	Subgingival	Deep Subgingival			
196	272	454	78			
Rating						
Perfect	Minor Defects*	Unusable				
924	60	16				

**98.4 %**

**Perfect Impressions**

\* Minor defects: Such as small air voids in the impression that did not extend to the preparation margin.

The International Journal of Prosthodontics. May 2007, vol 20, nr. 3

## 6:0 First-ever autoclavable impressions

### First-ever autoclavable impressions

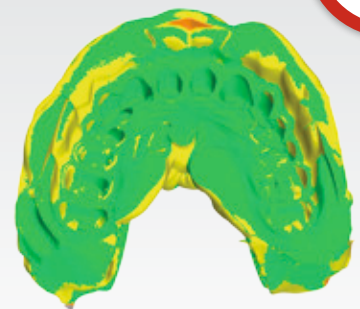
All AFFINIS and AFFINIS PRECIOUS impressions can be autoclaved at 134°C without losing its unique properties. The innovative autoclavable AFFINIS impression materials, impression trays and special adhesive system provides a new perspective on prevention.

### AFFINIS impressions – not only clean, but also sterile.

Complex computer tomographic and clinical measurements as well as comparisons confirm the excellent dimensional stability of the optimized AFFINIS impression material, even after autoclaving. A current study by Dr Brian Miller et al. at King's College London Dental Institute confirms the quality of the AFFINIS impression materials, adhesive (Coltène Adhesive AC) and trays (PRESIDENT impression trays AC).

#### **Dimensional changes after autoclaving**

*Comprehensive quality-controlled studies by dentists and laboratories demonstrated that highly precise and reliable autoclavable impressions and accurately fitting restorations can be attained, regardless of the impression taking technique or viscosity.  
(internal data)*



± (0 - 0.075 mm)    ± (0.075 - 0.120 mm)    ± (> 0.120 mm)

# 134°C

Autoclavable precision impressions – security made to measure

# Max.

Highly active surfactants deliver maximum precision and efficiency

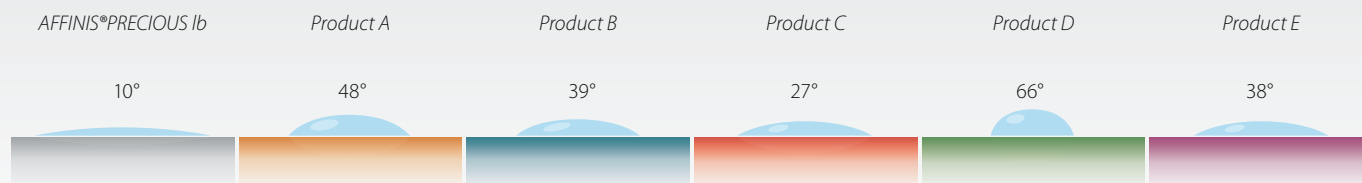
## 7:0 Maximum precision during model fabrication

### More accurate models

AFFINIS distinguishes itself by its quick and exceptional wettability of the model stone in the impression. The reason for this is due to its highly active surfactant agent. This feature is crucial for dental technicians when pouring the stone model.

### Precision when fabricating the model

Contact angle of a drop of water after placing it on cured light body impression material after 10 seconds (internal data).



AFFINIS was developed to attain highly precise results intraorally and in the laboratory. A precision model is the key for accurately fitting restorations.



AFFINIS model from the perspective of a dental technician.

# TECHNIQUES WITH AFFINIS<sup>®</sup>


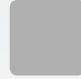
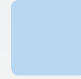
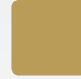
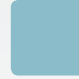

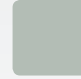
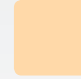



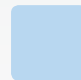

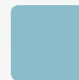


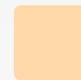

















---

<b>Page</b>	<b>18</b>		<b>One-step putty/wash impression</b>
<b>Page</b>	<b>19</b>		<b>Two-step putty/wash impression</b>
<b>Page</b>	<b>20</b>		<b>Monophase impression</b>
<b>Page</b>	<b>21</b>		<b>Functional impression</b>
<b>Page</b>	<b>22</b>		<b>Transfer impression</b>
			<b>Reline impression</b>

---



## Recommended material combinations

Wash material				Monophase material	Tray material			
AFFINIS light body <i>fast</i> light body	AFFINIS PRECIOUS light body	AFFINIS regular body <i>fast</i> regular body	AFFINIS PRECIOUS regular body	AFFINIS MonoBody	AFFINIS heavy body <i>fast</i> heavy body	AFFINIS Putty System 360	AFFINIS Putty super soft	AFFINIS Putty soft <i>fast</i> Putty soft
								
								
								
								
								
								

← low viscosity → high viscosity →



**The result: Outstanding detail.**

*The pressure of AFFINIS heavy body and the perfect flow properties of AFFINIS regular body deliver outstanding detail.*

## One-step putty/wash impression



**Easy filling of the tray**

The tray can be quickly and easily filled with AFFINIS heavy body, System 360 using the automatic mixer.



**Surface-activation**

While the assistant fills the tray, the dentist can syringe around the preparations using the preferred AFFINIS wash material.



**Hold in situ**

After applying gentle pressure, the tray must be held in situ during the setting phase.



**The perfect impression**

A perfect AFFINIS impression is the key for accurately fitting, laboratory fabricated restorations. It provides the ideal basis for successful teamwork between the dentist and the dental technician.



**Synchronized working**

*The wash material can be applied when the tray is being filled. Begin filling the tray so that filling and syringing are completed at the same time. Always insert the oral tip into freshly extruded material in order to prevent air voids. Insert the tray into the mouth immediately! Gently press for 2 to 3 seconds and hold in situ until the material is completely set.*

**▼ CLINICAL TIP**

**Maximize the working time**

*Higher temperatures will accelerate the setting process and lower temperatures will slow down the setting process. The material can be placed in the refrigerator to extend the working time.*



**The result: Optimal detail reproduction.**

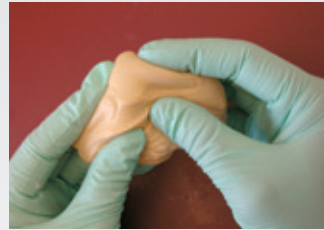
Using your preferred combination of AFFINIS material, you can obtain accurate detail reproduction and visually manageable end results. The consistency, setting time and colour of the materials are compatible with each other.

## Two-step putty/wash impression



**Dispensing**

The mixing ratio for all hand mixed AFFINIS putties is 1:1.



**Easy mixing**

AFFINIS putty soft and super soft are very easy to mix. The consistency of the base and catalyst are highly compatible, allowing them to be mixed quickly to a homogeneous consistency.



**Positioning**

Positioning of the first putty impression and hold in situ for 2 min. Wash the putty impression thoroughly with lukewarm water, dry and cut ventilation channels using a carving knife. This helps prevent an accumulation of wash material and any inaccuracies in the restoration.



**Wash impression**

Syringe around the preparation with AFFINIS PRECIOUS regular body. The surface activation of the wash material and high pressure of the AFFINIS putty prevents distortions in the impression caused by saliva and blood residue. This feature ensures for the highest amount of detail reproduction possible.



**Quick and reliable**

The wash material should be applied into the trimmed putty impression prior to syringing around the preparation to ensure that a sufficient amount of wash material is used.

**Maximize the working time**

Higher temperatures will accelerate the setting process and lower temperatures will slow down the setting process. The material can be placed in the refrigerator to extend the working time.

**▼ CLINICAL TIP**



**The result: Tear-resistant and elastic.**

*Impressions are residue-free and easily removed from the patient's mouth thanks to its high elastic recovery, optimal tear-resistance and elasticity of AFFINIS MonoBody. This guarantees precise end results.*

## Monophase impression



**Stable**

AFFINIS MonoBody features high stability as well as an ideal thixotropy.



**Efficient**

Easily filled into the impression syringe of the mixing unit.



**Flowable**

The material is thixotropic when syringed with optimal flow properties under pressure.



**Maximum precision**

The material flows when gentle pressure is applied during intraoral positioning, capturing the finest details. This ensures for a highly precise reproduction of the preparation. The tray must be held in situ during the intraoral setting phase. AFFINIS MonoBody does not have any taste or odor to prevent additional salivation.



▼ **CLINICAL TIP**

**AFFINIS MonoBody can also be used as the tray material for the one-step putty/wash technique.**

*We recommend using either AFFINIS light body or regular body as the wash material.*



**The result: Dimensionally stable.**  
*Optimum dimensional stability ensures for long-term precision.*

## Functional impression



### Precise application

After coating the border of the tray with Coltène adhesive, AFFINIS System 75 heavy body is applied around the functional margin.

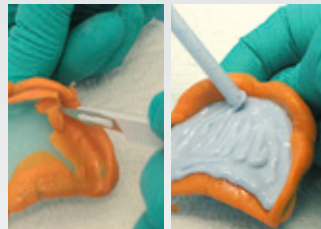


### Positioning

Position the custom tray. The viscosity is ideal for detailed reproduction of all functional movements.

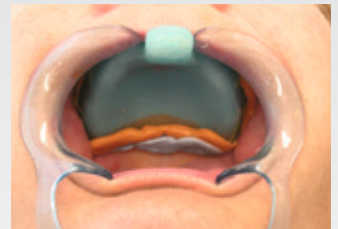
### Hydrocolloid-like properties

AFFINIS heavy body has hydrocolloid-like properties ensuring for an optimal contact to the mucosa in the moist oral environment.



### Cleaning

After the functional marginal impression has been cleaned with luke-warm water, dried and prepared with a scalpel, coat the base of the tray with adhesive and cover with wash material.

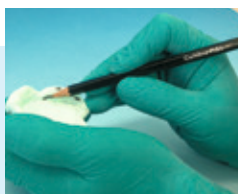


### Wash impression

Place the tray gradually into the final position and assist the patient again with the functional intraoral movements to optimize the wash impression.



Positioning



Mark the high spots on the PSI impression.



Remove the PSI impression.



Grind the denture in the marked area.

### ▼ CLINICAL TIP

#### Quick detection of pressure spots

After fitting the denture, high spots can be easily detected using the Coltène Pressure Spot Indicator (PSI) (page 35).





**The result: securely fixed**

The captured detail of the framework with AFFINIS heavy body ensures that the metal framework is securely fixed in the impression and remains precisely in position when removing the impression.

## Transfer impression



**Framework and adhesive**

Coating individual sections of the metal framework with Coltène adhesive.



**Easy filling of the tray**

The tray is filled quickly and easily with AFFINIS heavy body, System 360 using the automatic mixer.



**Accurate detail**

AFFINIS heavy body captures all details and covers the metal framework exactly.



**Securely fixed**

Metal framework remains exactly in position when removing the impression.



**Retention beads not required**

Even in extreme cases, apply Coltène Adhesive to individual sections of the framework to eliminate the use of laboratory fabricated retention beads. After the model fabrication, the adhesive can be easily removed by the technician using alcohol.



**▼ CLINICAL TIP**

**Easy control**

Fill the crowns and bridges with Coltène Pressure Spot Indicator (Order No. 4440) and inspect the accuracy of the fit of the restoration before permanent cementation.

# MATERIAL CONSISTENCIES THAT MEET YOUR NEEDS

## Wash materials

### AFFINIS light body / regular body

AFFINIS wash materials wet the tooth and gingiva extremely quickly and effectively. Its hydrocolloid-like property ensure that the wash material flows into the narrowest areas without applying pressure. AFFINIS has a very low contact angle thanks to its structure-breaking property of the surfactant agent. The mixed material provides adequate stability and does not drip from the tooth.

### AFFINIS PRECIOUS light body / regular body

AFFINIS PRECIOUS is the latest generation of wash materials. Its flow properties have been improved. The unique colours – silver and gold – facilitate readability of the impression detail. AFFINIS PRECIOUS wash materials have an application time of one minute. The thermo-active formula accelerates the setting process as soon as the impression tray is placed in the patient's mouth.



50 ml Cartridge



25 ml microSystem™



AFFINIS light body



AFFINIS regular body



50 ml Cartridge



25 ml microSystem™

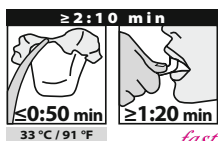
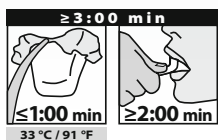


AFFINIS PRECIOUS light body



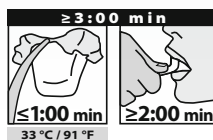
AFFINIS PRECIOUS regular body

Clinical setting times



*fast*

Clinical setting times



## Monophase, wash and tray material

### AFFINIS MonoBody

Monophase material has outstanding wetting properties in a moist environment and actively displaces moisture.

The surface affinity of AFFINIS is comparable to the hydrophilic properties of a polyether or hydrocolloid impression material. The outstanding thixotropy and innovative wetting technology of AFFINIS MonoBody prevents entrapment of air voids and distortions at the gingival margin. The impression is easily removed and a high tear resistance is guaranteed, so that all details are captured even in undercut areas.

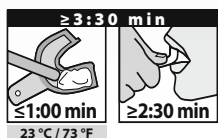


AFFINIS System 360

75 ml Cartridge

AFFINIS MonoBody

Clinical setting times



## Tray material

### AFFINIS heavy body / heavy body fast

The high consistency and rapid build up of pressure for AFFINIS heavy body produces strong compression, making this tray material ideal for the one-step putty/wash technique. Buccal and palatal areas can also be easily reproduced with AFFINIS heavy body.



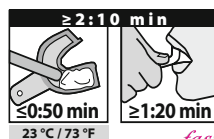
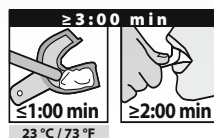
AFFINIS System 360

75 ml Cartridge

50 ml Cartridge

AFFINIS heavy body

Clinical setting times



*fast*



### AFFINIS System 360 putty

A genuine putty from a large cartridge. It provides a firm consistency immediately after being extruded from the mixing unit. It does not adhere to gloves and can be molded immediately into the tray to accommodate the clinical situation.



AFFINIS System 360 putty

### AFFINIS Putty super soft

AFFINIS putty super soft is a very smooth putty, which can be easily mixed to a homogeneous consistency. Super soft putty is ideal for all one-step putty/wash techniques.



AFFINIS Putty super soft

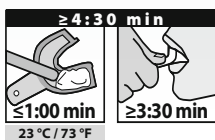
### AFFINIS Putty soft

AFFINIS putty soft is a standard putty in the AFFINIS putty range. The compatible consistencies of the base and catalyst ensure for quick and easy mixing.



AFFINIS Putty soft

Clinical setting times



Clinical setting times



Clinical setting times



*fast*

# APPLICATION OF AFFINIS<sup>®</sup>

**Two different technologies are available  
for the application systems:**

## **microSystem™**

The patented Coltène microSystem cartridges and mixing tips prevent cross-contamination of base and catalyst. The microSystem is compact and practical. This allows the impression material to be applied directly around the preparation from the dispenser. Material waste is minimized thanks to the small mixing tips.



## 50 / 75ml Cartridge system

The standard dispenser can be used to fill the impression tray directly from the cartridge or for syringing intra-orally around the preparations.



# micro



AFFINIS®PRECIOUS: Perfect, convenient, reliable.

## System 360

AFFINIS putty, MonoBody and heavy body in the 5:1 **Cartridge** (content 380ml) will fit all commercially-available automated mixing machines. The disposable 380ml-Cartridge is pre-filled and ready to use immediately. With the large volume of material and a minimum amount of waste in the empty cartridge, the delivery system is very economical to put into action.



## Putties

AFFINIS putties have an easy mixing consistency and are compatible with all AFFINIS wash materials.



# TRAYS AND ADHESIVES

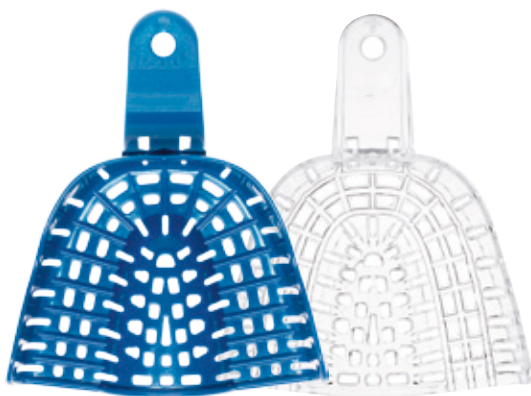
## Coltène impression trays and adhesives

### Impression trays

A patented system of ribs and rails provide plastic trays with a high degree of rigidity. The anatomical contour is the basis for an optimal impression.

### Coltène Adhesive

A thin layer of Coltène Adhesive provides extra retention of the tray material in the tray.



AC



AC



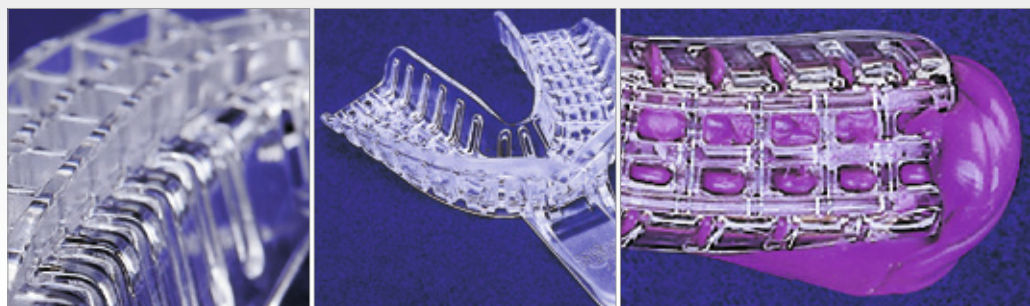
**Autoclavable PRESIDENT AC single-use impression trays and Coltène Adhesive AC**  
 Maximum safety for autoclaving can only guaranteed when using components (AC) recommended by Coltène/Whaledent.

### **PRESIDENT single-use impression trays (transparent) and PRESIDENT AC single-use impression trays (blue)\***

*The patented system of ribs and rails provide plastic trays with a high degree of rigidity.*

*The anatomical contour is the basis for an optimal impression.*

*The tray design ensures that any type of impression material is reliably retained in the tray.*



\* Geometry is identical

# BITE REGISTRATION

## JET BLUE BITE

The mousse-like consistency of JET BLUE ensures that the patient can occlude completely naturally, without feeling any resistance. The material is applied directly from the cartridge using a special spreader tip.

Its extremely short, patient-friendly intraoral setting time rapidly captures the occlusion. After the bite registration has set, JET BLUE BITE has a final hardness of 89 Shore A. It retains a slight degree of elasticity, so that no details can break off the registration and it can still be trimmed or cut.

- ▶ remains in the exact position where you want it
- ▶ no bite resistance, no resilience
- ▶ high final hardness, yet still remains flexible enough for minor adjustments

### Select the appropriate speed:

Fast – 30 sec. working time – 40 sec. intraoral setting time

Superfast – 20 sec. working time – 30 sec. intraoral setting time



### Direct application of JET BLUE BITE FAST



Application of  
JET BLUE BITE fast



Easy application  
with the spreader tip



Ideal working time



Bite registration



# CLINICAL REPORT

The quality of the impression material is decisive for the fitting accuracy and the long-term success rate of a fixed prosthetic restoration. It also saves time and treatment for the patient and the dentist if the impressions are accurate at the first try. This means that it is not necessary to take an impression a second time. Coltène/Whaledent is willing to go to great lengths in development work to come as close as possible to a perfect impression.

With AFFINIS PRECIOUS Coltène/Whaledent has optimised the surface affinity so that even in difficult situations the surface of the teeth will be thoroughly coated without problems and the material will not flow away uncontrolled. The flow behaviour has been optimised to an impressive degree, particularly in a moist environment.

The light-body and regular-body correction materials include unique gold and silver pigments designed to improve readability. They function like a mirror by reflecting the light rays into the eye of the observer. The light scatter is reduced, the light-dark contrast of the correction material is significantly increased and it improves the visual perception of details in the surface profile. Evaluation of the impression result is therefore easier and more secure. The well-known high accuracy of polyvinylsiloxane combined with the ideal processing and short oral dwelling time make these materials the first choice for use in making impressions of prosthetic constructions.



**„AFFINIS / AFFINIS PRECIOUS high-quality impression material guarantees fabrication of accurately fitting, state-of-the-art prosthetic restorations.“**

*Dr. med. dent. P. Heuzeroth  
Winterthur, Switzerland*

**Further user reports are available on our website:**

► [www.coltene.com](http://www.coltene.com)

## Clinical Report



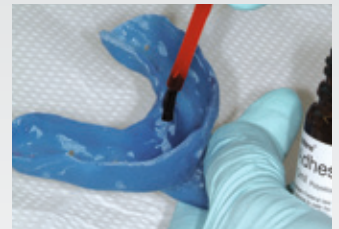
The situation with the skeletal prognathism meant that the patient had serious problems with chewing after the loss of tooth 46. Because he did not want an implant and wanted a restoration as quickly as possible, the manufacture of a conventional bridge was planned. The prior status of the abutment teeth (crown 47 and filling 45) made this solution appear ideal.



After extraction of the crowns and fillings and filling the defects in the teeth with dentine, the teeth were prepared for the new bridge.



To make the preparation margin on the impression obvious, the sulcus was opened and the gingiva slightly retracted with Magic FoamCord (Coltène/Whaledent) and counterpressure from the Comprecap anatomic.



While waiting for this procedure there was time to apply Coltène Adhesive to the prepared customised tray. One of the basic requirements for good impressions is the use of customfitted trays (or standard trays of the appropriate size). Sufficient pressure must be applied to the impression compound to ensure a good result. A tray that fits well increases the accuracy, because an evenly controlled layer thickness means fewer errors.





A sufficient quantity of AFFINIS PRECIOUS (light-body or regular body) was applied to the stumps and the correctly filled tray with the more viscous AFFINIS heavy body was placed in the mouth (single-step 2-phase impression).

When using this technique it is important to select the start time of filling the tray so filling and injection are finished simultaneously, because AFFINIS PRECIOUS sets quickly in the warm oral environment. The ideal processing time for stressfree application and the short oral dwelling time are features that make the procedure much easier for the user and of course for the patient. An experienced dental team is also very helpful when making impressions.

After removal of the tray a close check of the impression of the preparation margin is easy.

An accurately fitted bridge could now be fabricated in the dental laboratory for delivery into the mouth. AFFINIS as a high quality standing impression material guarantees an accurately fitted prosthetic restoration that conforms to the state of the art.

# Product range

## AFFINIS 50/75 System

6501	AFFINIS light body 50 ml Single Pack	2 x 50 ml Cartridge, 12 x Mixing Tip Yellow	1	
6601	AFFINIS fast light body 50 ml Single Pack		A	
6511	AFFINIS regular body 50 ml Single Pack		2	
6611	AFFINIS fast regular body 50 ml Single Pack			
6775	AFFINIS PRECIOUS light body Single Pack			
6776	AFFINIS PRECIOUS regular body Single Pack			
6590	AFFINIS heavy body 50ml Single Pack	2 x 50 ml Cartridge, 6 x Mixing Tip Turquoise	2	
6650	AFFINIS fast heavy body 50ml Single Pack			
6520	AFFINIS heavy body 75 ml Single Pack	2 x 75 ml Cartridge, 12 x Mixing Tip Turquoise	2	
6620	AFFINIS fast heavy body 75 ml Single Pack			
6547	AFFINIS MonoBody 75 ml Single Pack			
4405	Coltène Adhesive AC 10 ml			
4410	Coltène Adhesive 10 ml	1 pc.		
6900	Dispenser 50/75 ml			
6550	Mixing Tip Yellow	40 pcs.	1	
6552	Mixing Tip Turquoise	40 pcs.	2	
6555	Oral Tip Yellow	100 pcs.	A	

## AFFINIS microSystem

6500	AFFINIS light body microSystem™ Single Pack	4 x 25 ml microSystem™ Cartridge, 20 x Mixing Tip Green, 20 pcs. Oral Tips	3
6600	AFFINIS fast light body microSystem™ Single Pack		B
6779	AFFINIS PRECIOUS light body microSystem™ Single Pack		
6510	AFFINIS regular body microSystem™ Single Pack	4 x 25 ml microSystem™ Cartridge, 20 x Mixing Tip Clear, 20 pcs. Oral Tips	4
6610	AFFINIS fast regular body microSystem™ Single Pack		B
6780	AFFINIS PRECIOUS regular body microSystem™ Single Pack		
6270	microSystem™ Dispenser MK II	1 pc.	
6202	Mixing Tip Green	40 pcs.	3
6205	Mixing Tip Green	100 pcs.	3
6214	Mixing Tip Clear	40 pcs.	4
6215	Mixing Tip Clear	100 pcs.	4
6210	Oral Tip White	100 pcs.	B

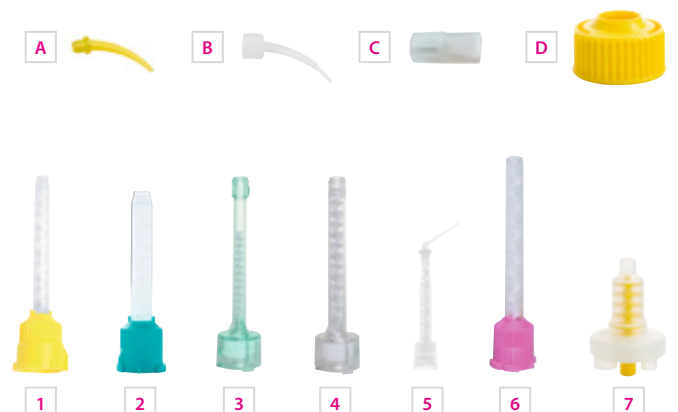
## AFFINIS System 360

6485	AFFINIS System 360 heavy body Starter Kit	1 x 380ml (Base and Cat.) 10 x Mixing Tip Yellow 1 x System 360 Fixation Ring	5
6480	AFFINIS System 360 MonoBody Starter Kit		
6471	AFFINIS System 360 Putty Starter Kit	1 x 380ml (Base and Cat.) 10 x Mixing Tip Yellow 1 x System 360 Fixation Ring	7 D
6487	AFFINIS System 360 heavy body Refill Pack	2 x 380ml (Base and Cat.) 1 x System 360 Fixation Ring	7
6482	AFFINIS System 360 MonoBody Refill Pack		
6472	AFFINIS System 360 Putty Refill Pack	2 x 380ml (Base and Cat.) 1 x System 360 Fixation Ring	7 D
4418	Impression Syringe	50 pcs.	
6162	Dynamic Mixing Tip Yellow	40 pcs.	7
6163	System 360 Fixation Ring	1 pc.	D

## AFFINIS Putty

6530	AFFINIS putty soft Single Pack	300 ml Base and Catalyst each
6531	AFFINIS fast putty soft Single Pack	
6535	AFFINIS putty super soft Single Pack	

## Overview of the mixing- and oral tips



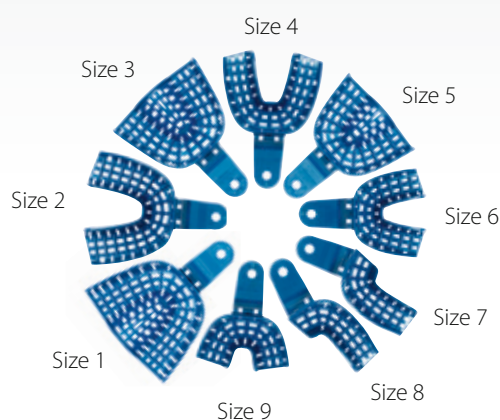
# Impression trays / Bite registration materials

## PRESIDENT Standard single-use trays

<b>C6901</b>	Size 1 Upper, large	12 pcs.
<b>C6902</b>	Size 2 Lower, large	
<b>C6903</b>	Size 3 Upper, medium	
<b>C6904</b>	Size 4 Lower, medium	
<b>C6905</b>	Size 5 Upper, small	
<b>C6906</b>	Size 6 Lower, small	
<b>C6907</b>	Size 7 Quadrant Upper left/Lower right	
<b>C6908</b>	Size 8 Quadrant Upper right/Lower left	
<b>C6909</b>	Size 9 Anterior Upper/Lower	

## PRESIDENT Autoclavable single-use trays

<b>C6950</b>	Size 1 Upper, large	12 pcs.
<b>C6951</b>	Size 2 Lower, large	
<b>C6952</b>	Size 3 Upper, medium	
<b>C6953</b>	Size 4 Lower, medium	
<b>C6954</b>	Size 5 Upper, small	
<b>C6955</b>	Size 6 Lower, small	
<b>C6956</b>	Size 7 Quadrant Upper left/Lower right	
<b>C6957</b>	Size 8 Quadrant Upper right/Lower left	
<b>C6958</b>	Size 9 Anterior Upper/Lower	



## JET BLUE BITE

<b>6491</b>	<b>JET BLUE BITE fast 50 ml Single Pack</b>	1 × 50 ml Cartridge, 6 × Mixing Tip Pink, 6 × Spreader Tips	<b>6</b> <b>C</b>
<b>6493</b>	<b>JET BLUE BITE superfast 50 ml Single Pack</b>		
<b>6495</b>	<b>JET BLUE BITE fast 50 ml Refill Pack</b>	4 × 50 ml Cartridge, 12 × Mixing Tip Pink, 12 × Spreader Tips	<b>6</b> <b>C</b>
<b>6497</b>	<b>JET BLUE BITE superfast 50 ml Refill Pack</b>		
<b>6551</b>	Mixing Tip Pink	40 pcs.	<b>6</b>
<b>6223</b>	Spreader Tips	100 pcs.	<b>C</b>
<b>6900</b>	Dispenser 50/75	1 pc.	

## Magic FoamCord

<b>6735</b>	<b>Magic FoamCord Intro Kit</b>	2 × 50 ml Cartridge, 10 × Mixing Tip Yellow, 10 × Oral Tips Yellow, 45 × Comprecap anatomic	<b>1</b> <b>A</b>
-------------	---------------------------------	--	----------------------

## PSI – Pressure Spot Indicator

<b>4440</b>	<b>PSI Single Pack</b>	1 × 20 ml Activator 1 × 55 ml Base
<b>4445</b>	<b>PSI Activator</b>	1 × 20 ml Activator

JET BLUE BITE is a trademark of Coltène/Whaledent, JET BLUE is a registered trademark of Coltène/Whaledent AG, internationally, excluding the U.S.

In North America, please add the letter C before each item number when ordering

# THE AFFINIS FAMILY



© 2014 Coltène/Whaledent AG – [www.coltene.com](http://www.coltene.com)

#### **Coltène/Whaledent Ltd.**

The President Suite-A  
Kendal House, Burgess Hill,  
Victoria Way  
West Sussex, RH15 9NF / U.K.  
Tel +44 1444 235486  
Fax +44 1444 870640  
[info.uk@coltene.com](mailto:info.uk@coltene.com)

#### **Coltène/Whaledent AG**

Feldwiesenstrasse 20  
9450 Altstätten / Switzerland  
Tel +41 71 757 5300  
Fax +41 71 757 5301  
[info.ch@coltene.com](mailto:info.ch@coltene.com)

#### **Coltène/Whaledent Inc.**

235 Ascot Parkway  
Cuyahoga Falls, Ohio 44223 / USA  
Tel +1 330 916 8800  
Fax +1 330 916 7077  
[info.us@coltene.com](mailto:info.us@coltene.com)

 **COLTENE**