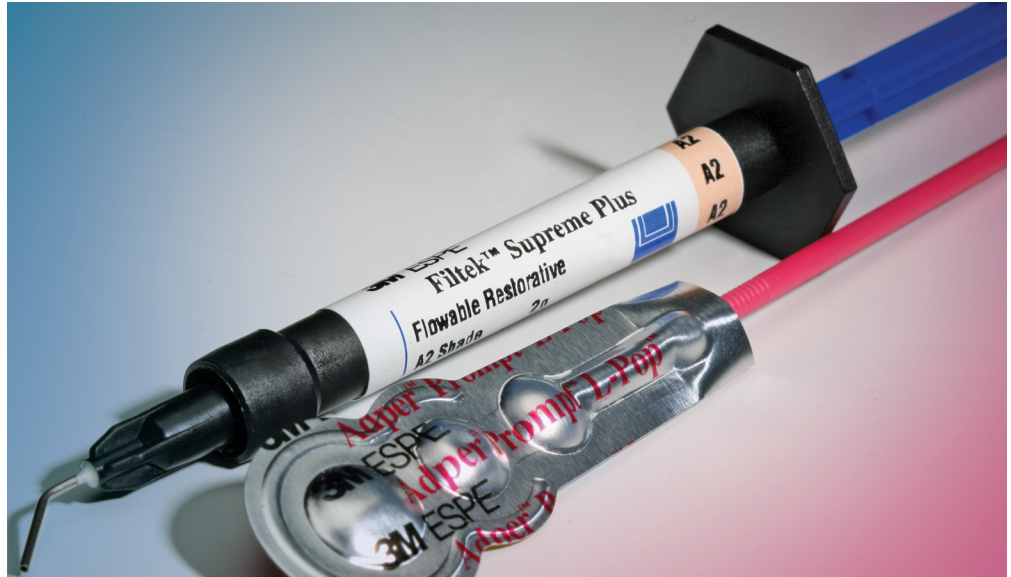


Filtek™ Supreme Plus Flowable Restorative and Adper™ Prompt™ Self-Etch Adhesive



Filtek™
Adper™

Two products working together to simplify Minimally Invasive Dentistry.

When it comes to minimally invasive dentistry (MID), less is more. *Less* drilling means *more* of the tooth structure remains, helping patients maintain their natural smiles throughout their lifetimes.

Unfortunately, less may also mean more work for you – if you use a conventional hybrid composite in combination with an adhesive that requires the etch, prime and rinse steps.

3M ESPE offers a great time-saving, easy MID solution.

The excellent handling, esthetics and wear-resistance of Filtek Supreme Plus Flowable Restorative – combined with the speed of Adper Prompt Self-Etch Adhesive – provide a simple, effective solution for your MID needs.

The Ideal Combination for:

- Small Class I, III, V restorations
- Small MID restorations
- Sealing pits and fissures

Two clinically-proven products.



Patient presented with cervical erosions on upper cuspid and premolar.



The cuspid has been properly isolated and Adper™ Prompt™ L-Pop™ Self-Etch Adhesive is being applied.



After proper drying of the Adper Prompt adhesive, the adhesive is light cured.



The lesion will be restored using Filtek™ 3 Flowable, shade...

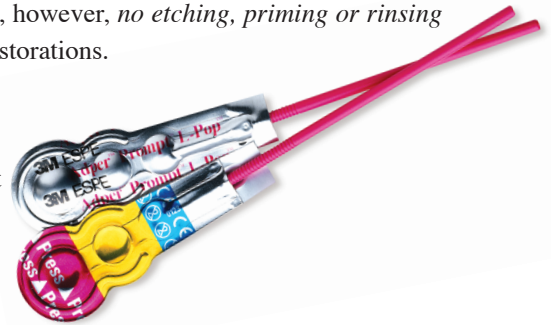
- Bonds to dentin, cut enamel and uncut enamel without separate etch step
- Clinically proven
- Very low incidence of post-operative sensitivity
- Desensitizes hypersensitive root surfaces
- Simplifies MID technique
- Simplifies sealant technique
- Innovative, disposable L-Pop™ unit-dose delivery system
- Available with extra small applicator brushes for very small preparations or working in hard-to-reach areas

Adper™ Prompt™ Self-Etch Adhesive The ideal MID adhesive.

Most self-etch adhesives – including the new one-bottle systems – are either not indicated for use on uncut enamel, or require a separate acid-etch step in order to bond to uncut enamel. With Adper Prompt Self-Etch Adhesive, however, *no etching, priming or rinsing is required* – reducing the time spent on MID restorations.

Etches even uncut enamel

The lower pH of Adper Prompt Self-Etch Adhesive provides deeper etch patterns on uncut enamel than competitive adhesives. The result is proven bond strength without the need for a separate etch step.

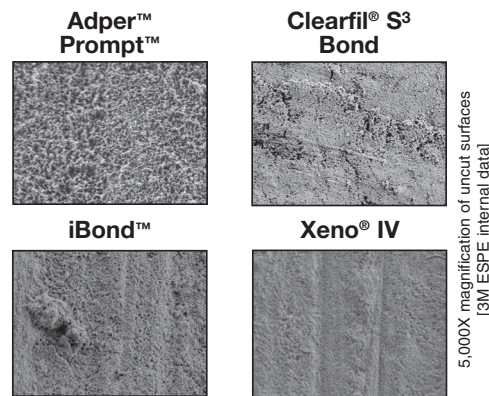


This enhances Adper Prompt adhesive's versatility as a fast, convenient one-step adhesive that offers outstanding bond strength with very low incidence of post-operative sensitivity.

No rinsing required

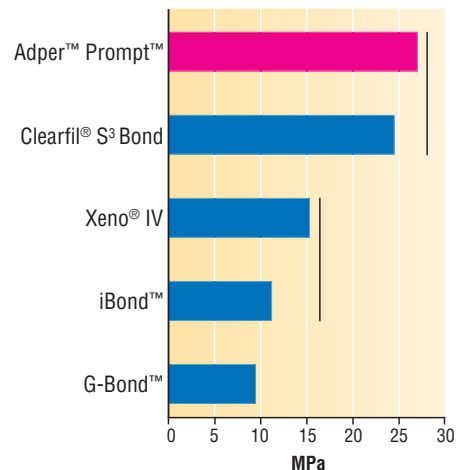
Because the phosphoric acid etch is eliminated, there's no need to rinse – resulting in additional time savings and easier patient management.

Etch Patterns on Uncut Enamel



These scanning electron microscopy images show the lower pH of Adper Prompt™ adhesive provides a more pronounced etch than other self-etch adhesives, allowing for use on UNCUT enamel without a separate acid-etch step. Other adhesives require a separate etch step, per their instructions for use, to properly prepare intact enamel surfaces for bonding.

Bond to Uncut Enamel



Test results confirm Adper™ Prompt™ adhesive's microtensile bond strength. Vertical white lines connect products where bond strength is statistically similar. [Source: Independent microtensile testing courtesy of Dr. Jorge Perdigao, UNIVERSITY OF MINNESOTA].

One fast, easy technique.



be restored
Supreme Plus
de A3.5



The flowable has been placed and cured, but has not yet been polished.



The restoration is finished and polished using Sof-Lex™ XT Discs from 3M ESPE.



The finished restorations. Note the excellent color match and marginal adaptation.

Filtek™ Supreme Plus Flowable Restorative The ideal MID composite.

Filling the small cavities associated with minimally invasive restorations brings many challenges. The cavities are generally difficult to wet, seal and bond. But the low viscosity of Filtek Supreme Plus Flowable Restorative allows it to flow into the cavity, almost by itself.

Controlled, flow-on-demand handling

The direct application method is simple to use. During extrusion, the material becomes more fluid, and flows readily – for effective coverage.

Once placed and the flow ceases, the material returns to its original, non-slumping viscosity and holds its shape.

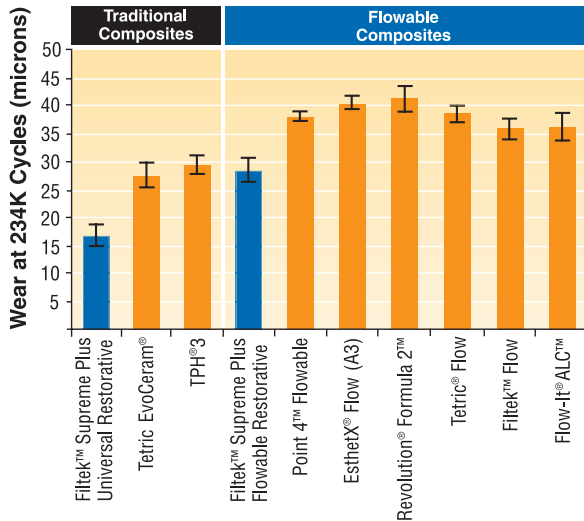
High Wear Resistance

Filtek Supreme Plus Flowable is a true nanocomposite — the filler particles are all on a nanoscale for improved esthetics. Filler load of 55% contributes to wear resistance that is better than leading flowables, and comparable to some traditional microhybrids.



- Better esthetics due to 3M ESPE's unique nanotechnology
- Nanotechnology for better gloss retention
- Flow-on-demand handling that dentists prefer
- Low wear
- Excellent radiopacity
- Available in 12 shades, including Opaque A3 which makes a great liner/base

Wear of Flowables



3-Body Wear Test

Source: 3M ESPE internal data

Ordering Information



3M™ ESPE™ Filtek™ Supreme Plus Flowable Restorative Introductory Kit (5032SC)



3M™ ESPE™ Filtek™ Supreme Plus Flowable Restorative Refill



Adper™ Prompt™ L-Pop™ Self-Etch Adhesive (unit-dose delivery)

Item Number	Product Information	
5032SC	Filtek™ Supreme Plus Flowable Restorative Introductory Kit¹ Includes 5 – 2g syringes ² , 1 each of 5 different shades (A2, A3, A3.5, W, OA3); 3 bags of 20 dispensing tips ²	
Filtek™ Supreme Plus Flowable Restorative Refills		
5032A1	A1	2 – 2g syringes of Shade A1; 1 bag of 20 dispensing tips
5032A2	A2	2 – 2g syringes of Shade A2; 1 bag of 20 dispensing tips
5032A3	A3	2 – 2g syringes of Shade A3; 1 bag of 20 dispensing tips
5032A3.5	A3.5	2 – 2g syringes of Shade A3.5; 1 bag of 20 dispensing tips
5032A4	A4	2 – 2g syringes of Shade A4; 1 bag of 20 dispensing tips
5032B1	B1	2 – 2g syringes of Shade B1; 1 bag of 20 dispensing tips
5032B2	B2	2 – 2g syringes of Shade B2; 1 bag of 20 dispensing tips
5032C2	C2	2 – 2g syringes of Shade C2; 1 bag of 20 dispensing tips
5032D2	D2	2 – 2g syringes of Shade D2; 1 bag of 20 dispensing tips
5032W	White	2 – 2g syringes of Shade W; 1 bag of 20 dispensing tips
5032XW	Extra White	2 – 2g syringes of Shade XW; 1 bag of 20 dispensing tips
5032OA3	OA3	2 – 2g syringes of Shade OA3; 1 bag of 20 dispensing tips
3700T	Filtek™ Flowable Restorative Dispensing Tips 20 dispensing tips	
Adper™ Prompt™ L-Pop™ Self-Etch Adhesive		
41923	Mini Pack – 20 L-Pop Applicators with XS Brushes¹	
41925	Refill Pack – 40 L-Pop Applicators¹	
41926	Giant Pack – 100 L-Pop Applicators¹	
41927	Bulk Pack – 200 L-Pop Applicators¹	
41928	Economy Pack – 500 L-Pop Applicators¹	
41904	XS Applicator Brushes – Refill Pack¹	

¹MSDS available. Call 1-800-634-2249

²Also available separately

Customer Care Center: 1-800-634-2249 www.3MESPE.com

3M ESPE

Dental Products

3M Center
Building 275-2SE-03
St. Paul, MN 55144-1000
U.S.A.
1-800-634-2249

3M Canada

Post Office Box 5757
London, Ontario N6A 4T1
Canada
1-800-265-1840 ext. 6229

Please Recycle

Printed in U.S.A.
© 3M 2006. All rights reserved.

3M, ESPE, Adper, Filtek, L-Pop, Prompt and Sof-Lex are trademarks of 3M or 3M ESPE AG. Used under license in Canada. Clearfil, EsthetX, Flow-It, G-Bond, iBond, Point 4, Revolution, Tetric, TPH and Xeno are not trademarks of 3M or 3M ESPE AG.

70-2009-3860-6