

Neo Spectra™ ST flow

Flowable Composite Restorative

Ordering Information

COMPULA® INTRODUCTORY KIT 607.01.910

24 Compula® Tips (0.25g ea)
4 shade A1 (= VITA® shades A1; B1; C1)
4 shade A2 (= VITA® shades A2; B2; D2)
8 shade A3 (= VITA® shades A3; C2; D3; D4)
4 shade A3.5 (= VITA® shades A3.5; B3; B4; C3)
4 shade A4 (= VITA® shades A4; C4)
1 Bottle Prime&Bond Universal™ Adhesive (2.5 mL)
Accessories
Compules Tips Gun
i-shade label

SYRINGE INTRODUCTORY KIT 607.01.920

5 Syringes (1.8g each) Shades A1-A4
1 Bottle Prime&Bond Universal™ Adhesive (2.5 mL)
i-shade label
Accessories

COMPULA® TIPS REFILLS

16 Compula® Tips (0.25g ea)

Shades

A1 (= VITA® shades A1; B1; C1)	607.01.911
A2 (= VITA® shades A2; B2; D2)	607.01.912
A3 (= VITA® shades A3; C2; D3; D4)	607.01.913
A3.5 (= VITA® shades A3.5; B3; B4; C3)	607.01.915
A4 (= VITA® shades A4; C4)	607.01.914
BW (Bleach White)	607.01.916
D1 (Opaque Dentin)	607.01.918
D3 (Opaque Dentin)	607.01.919
E1 (Translucent Enamel)	607.01.917

SYRINGE REFILLS

2 Syringes (1.8g ea)

25 Syringe Tips

Shades

A1 (= VITA® shades A1; B1; C1)	607.01.921
A2 (= VITA® shades A2; B2; D2)	607.01.922
A3 (= VITA® shades A3; C2; D3; D4)	607.01.923
A3.5 (= VITA® shades A3.5; B3; B4; C3)	607.01.925
A4 (= VITA® shades A4; C4)	607.01.924
BW (Bleach White)	607.01.926
D1 (Opaque Dentin)	607.01.928
D3 (Opaque Dentin)	607.01.929
E1 (Translucent Enamel)	607.01.927

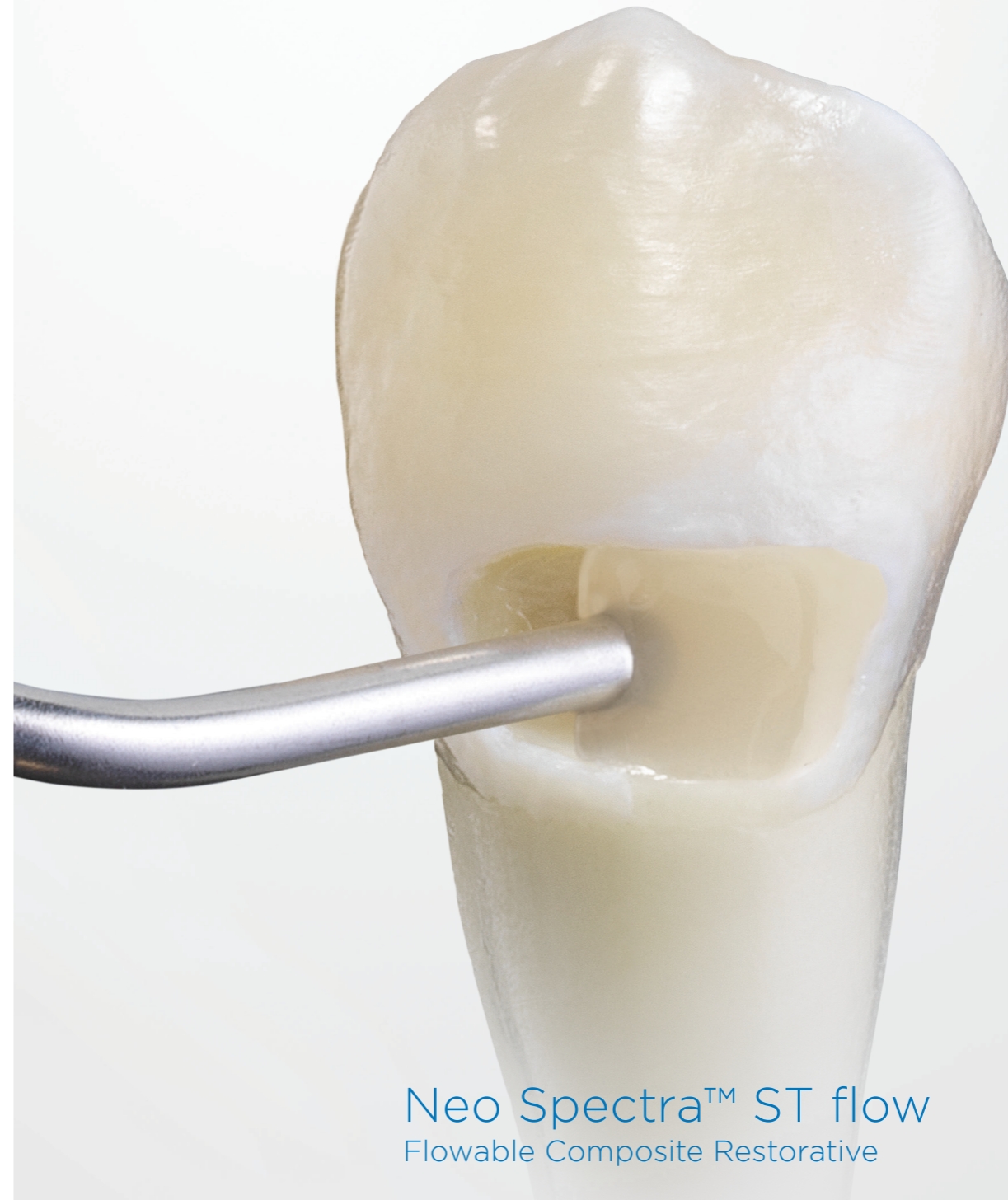
SYRINGE TIPS REFILL

50 Syringe Tips

607.01.932



FLOWABLE SIMPLIFIED.



Neo Spectra™ ST flow
Flowable Composite Restorative

To Learn More, Visit
<http://dentsplysirona.com/NeoSpectraSTflow>

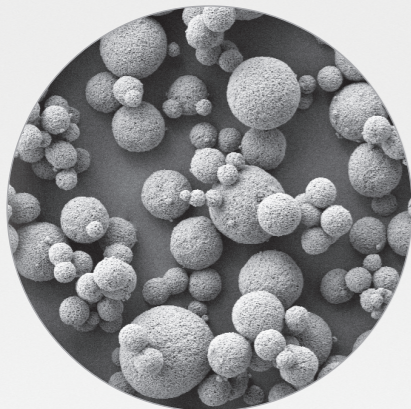
Neo Spectra™ ST flow
Flowable Composite Restorative

A simpler, more versatile esthetic flowable composite.

Thanks to our unique SphereTEC® technology, Neo Spectra™ ST flow composite offers greater simplicity and versatility than you've ever seen in an esthetic flowable.

- ➔ STREAMLINED SHADE COVERAGE
- ➔ OPTIMIZED HANDLING
- ➔ LASTING ESTHETICS

Neo Spectra™ ST flow material, powered by SphereTEC® technology.



SEM picture of SphereTEC® spherical prepolymerized fillers. Their shape and size distribution optimize the material's flow-on-demand handling.

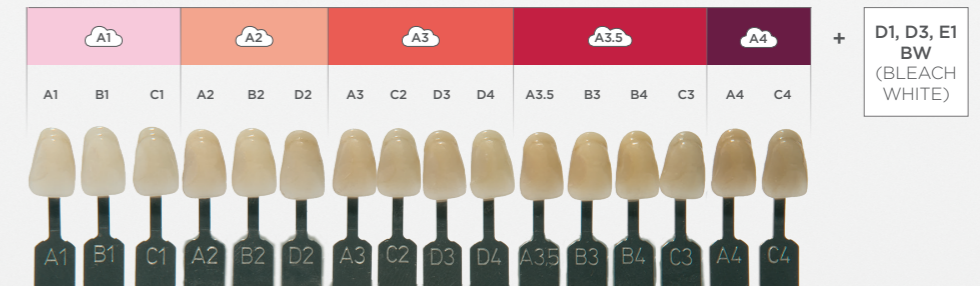


ONLY OUR PROPRIETARY SPHERETEC® TECHNOLOGY CAN DELIVER THESE BENEFITS:

Five Shades cover the full 16-shade VITA® range

- Chameleon blending enables universal CLOUD shades A1-A4 to cover the full VITA¹ range
- Bleach white plus two opaque dentin shades and one translucent enamel shade accommodate special cases
- Flawless shade match to our full Neo Spectra™ ST & Neo Spectra™ ST Effects universal composite portfolio

Universal CLOUD Shades
VITA® SHADES¹



Flow-on-demand handling provides optimum versatility

- Stays put until flow behavior initiates on your command with instrumentation
- Convenient application in Compula® Tips or Syringe



High strength, polish, and stain resistance

- SphereTEC® technology delivers trusted strength
- Resistant to staining from common colorants such as coffee, tea, and red wine
- Quickly and easily polishes to a high gloss



NEO SPECTRA™ ST FLOW COMPOSITE.
A NEW SHADE OF VERSATILITY.

1.VITA is not a registered trademark of Dentsply Sirona.