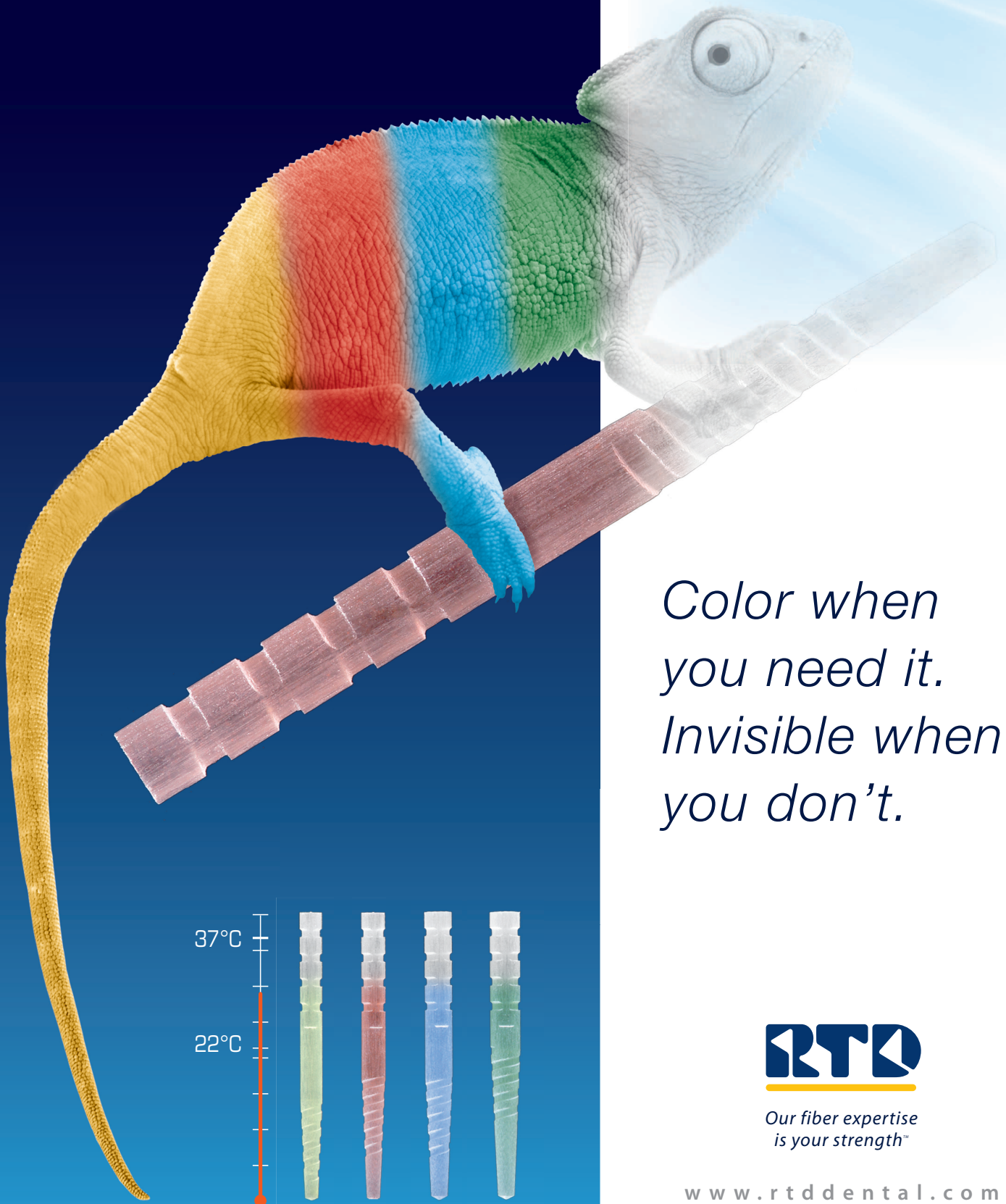


MACRO-LOCK[®] POST X-RO[®] ILLUSION[®]



*Color when
you need it.
Invisible when
you don't.*



*Our fiber expertise
is your strength™*

www.rtdental.com

X-RO® is a new, patented fiber, developed exclusively for dentistry by RTD, with unique radiopacifiers. The in vitro and clinical benefits are profound and persuasive.

Flexible strength:

1800 - 2000 MPa

Interlaminar shear strength:

65 - 70 MPa

Elastic modulus:

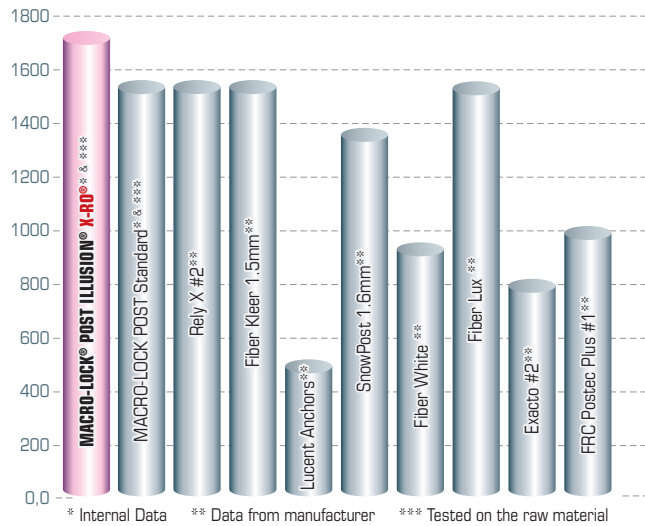
**(300): 15GPa,
same as dentin**

Fatigue Resistance:

**10,000,000 cycles
without breaking**

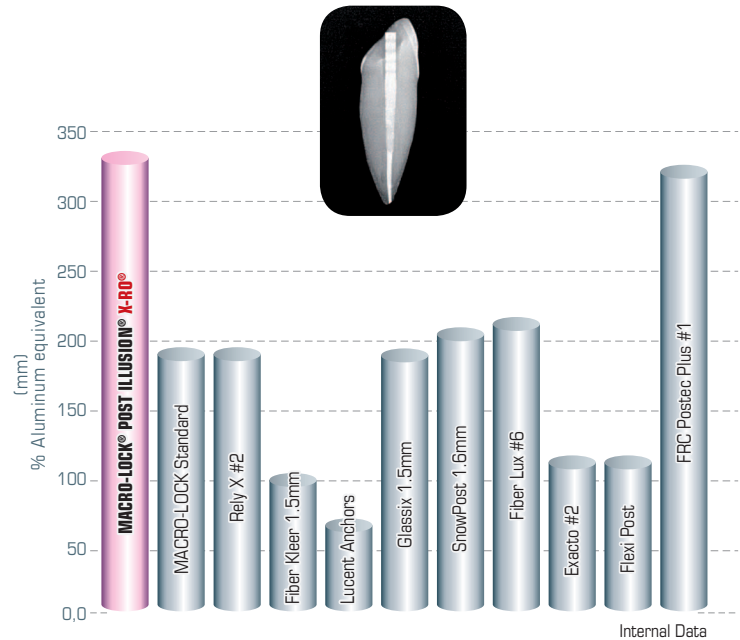
Flexural Strength (ISO #4049)

X-RO Fibers utilize a proprietary coupling agent that increases the bond between the fiber and the epoxy matrix. Together they improve Flexural Strength by at least 200MPa over previous generations of RTD posts. The values given here are from the respective manufacturers.

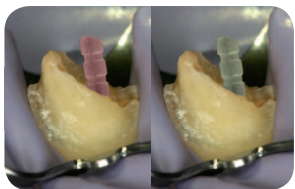


Radiopacity

Radiopacity of the X-RO is ~50% greater than previous generations of RTD Posts, to reach 340% of Aluminum equivalent (ISO Standard #4049). The radiopacity of the post itself varies from 476% (Macro-Lock size 1) to 573% (Macro-Lock size 4).



Patented **ILLUSION** technology



Color-coding for easy identification before or after placement; Posts match the drills.

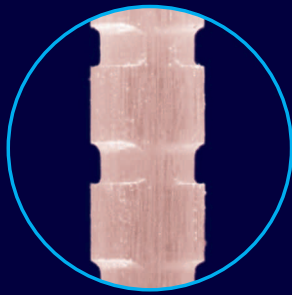


With patented ILLUSION technology, intrinsic color-coding disappears when seated, re-appears on demand, if removal ever becomes necessary.

Other benefits

- Atraumatically removable in minutes.
- Translucency provides esthetics and expedites the dual-cure cementation procedure.
- Corrosion-free and biocompatible. X-RO has passed cytotoxicity, and also intradermal reactivity, systemic toxicity, genotoxicity and hypersensitivity, in order to ensure complete biocompatibility and safety.

MACRO-LOCK POST ILLUSION



Proven Superior Retention

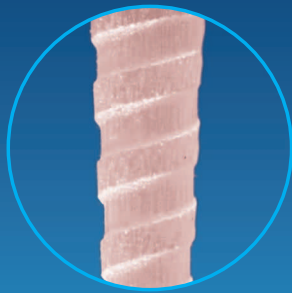
Macro-serrations and anti-rotation features interlock with the cement and core material to increase retention.

Enhanced MICRO-retentive surface roughness in the "smooth" areas of the post.

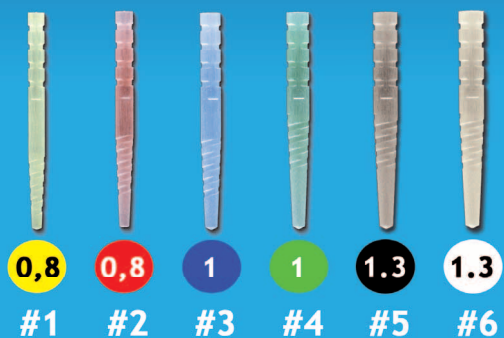
This is the thickest area of the post, for extra strength in function.

Together these eliminate the need for chair-side silane coatings.

Tapered shape enhances adaptation to the root anatomy and conserves dentin.



1.35 1.45 1.65 1.85 2.05 2.20



OPINION LEADERS WORLDWIDE



Dr. Enrique Kogan French

Universidad Tecnológica de Mexico, Mexico city, Nova Southeastern University College of Dental Medicine, Fort Lauderdale, FL, private practice: Mexico City.

"Fiber posts are a reality and a better alternative for the reconstruction of teeth with endodontic treatment. RTD is the creator and the better systems I am recommending... Why not use the best?"



Dr. Yining Wang

Director of Prosthodontics Department, School of Stomatology, Wuhan University, China.

"The validity of fiber post has been confirmed by both of the clinical data and experimental studies. I have been using Macro-Lock fiber post for more than three years. The clinic outcome is excellent. Meanwhile, the mechanical properties of Macro-Lock fiber post have been tested in our studies, experimental or numerical analysis. The quality of Macro-Lock fiber post is outstanding."



Dr. Manfred Friedman

Private Practice, Adjunct Professor, Schulich School of Medicine & Dentistry, Univ. of Western Ontario, London, Ontario, Canada.

"I have placed over 500 Macro-Lock posts without a single failure. The tapered shape facilitates minimal removal of tooth structure and ensures a minimal amount cement, which minimizes polymerization shrinkage and micro-leakage. Superior physical properties, along with macro and micro-retention, and anti-rotational features make this my post of choice for extensively broken down teeth."



Dr. Nicolas Cheleux

Private Practice, Former Assistante of Toulouse University, France.

"I have used RTD fiber posts regularly for more than 10 years and I have had the opportunity to observe the constant improvement with each generation of fiber post. The replacement of the carbon fibers with quartz fibers has dramatically improved the bio mechanical properties, with a modulus of elasticity closer to the dentin, the adhesion with all of the bonding systems as well as the optical properties of the post, to optimize the aesthetics of the final restoration."

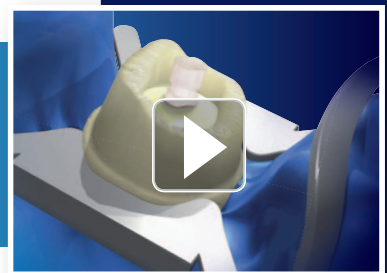
For more information,
connect to these links.



More info on the Macro-Lock® Post ILLUSION® packaging:
www.rtd-dental.eu/macro-lock/GB



View technique video at:
www.rtd-dental.eu/macro-lock-site/GB



Visit www.rtdental.com



RTD

3, rue Louis Neel

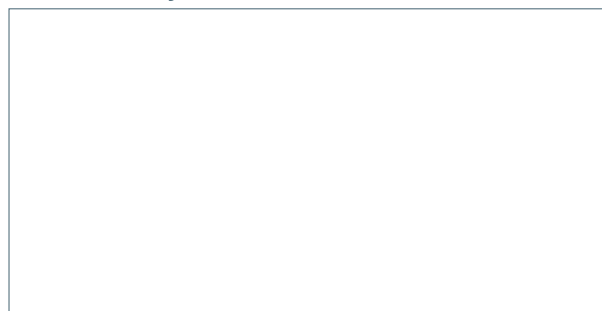
38120 St-Égrève - France

Tel.: +33 (0)4 76 56 56 66

Fax: +33 (0)4 76 56 11 77

E-mail: rtd@rtd.fr - www.rtdental.com

Distributed by



DOC4590GB00-201401-21

