

Easy Glaze®

HIGH GLOSS FINISHING IN ONLY TWO STEPS

Indications

Surface sealing of provisional crowns and bridges, glass ionomer restoratives and definitive composite restorations

Sealing and protecting the adhesive interface between restoration and tooth structure

Protecting glass ionomer cement surfaces from the effects of moisture and dehydration immediately after placement

Sealing glass ionomer liners/build-ups before taking an impression with an alginate

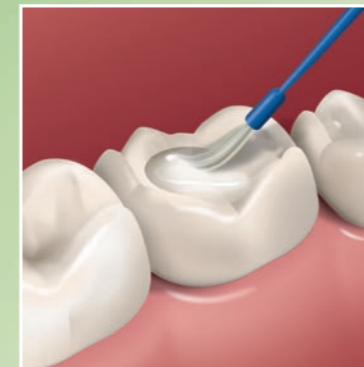
Your advantages:

- Adheres to enamel, dentine, composite and glass ionomer materials
- No conditioning of the restorative necessary
- Natural gloss, quickly created
- Time-consuming high gloss polishing of the temporary is unnecessary
- Simple application
- Optimally coordinated accessories contained in the set
- So versatile it can be used daily



Presentation

REF 1016 bottle 5 ml, accessories



VOCO GmbH
 P.O. Box 767
 27457 Cuxhaven
 Germany
 Tel.: +49 (0) 4721-719-0
 Fax: +49 (0) 4721-719-140
 info@voco.com
 www.voco.com

Available from:

Easy Glaze®

NANO-FILLED, LIGHT-CURING VARNISH
 FOR SEALING SURFACES

Easy Glaze®

MAXIMUM RADIANCE IN ONLY TWO STEPS

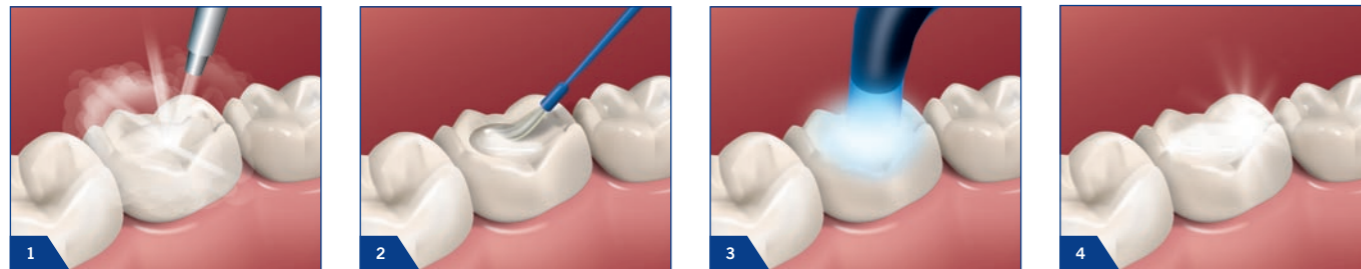
Easy Glaze is a nano-filled, light-curing protective varnish for sealing surfaces. It is simple to use and its versatility makes it suitable for use on numerous materials.

The application on glass ionomer restorations, provisional composite crowns and bridges as well as composite restorations is straightforward and time-saving: A thin layer is sufficient to achieve a high gloss, extremely smooth surface.

Easy Glaze is simple to subsequently cure with either a halogen or LED polymerisation light. Prior conditioning of the restorative is unnecessary.

The nano-fillers contained in Easy Glaze can considerably reduce the abrasion of restorations made from glass ionomer and composite materials as well as temporary crowns and bridges.

Simple application of Easy Glaze®



[1] Easy Glaze® as the high gloss finish for composite restorations

Easy Glaze is the simple high gloss finish for composite restorations. With its perfectly coordinated viscosity, Easy Glaze penetrates the smallest crevices and irregularities after

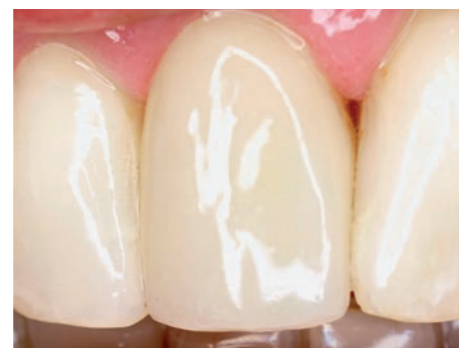
application, smoothes them out, seals them and leaves behind a brilliant, smooth surface without modifying the occlusion.

Easy Glaze provides the adhesive interface between composite and tooth substance with long-term protection.



Before: Composite restorations can appear dull even after the high gloss finishing.

Source: Dr. Marcelo Balsamo



After: Only one layer of Easy Glaze is sufficient to achieve a high gloss effect on the composite restoration. After application of Easy Glaze, the restoration is not only very glossy, but also protected from discolouration and abrasion.

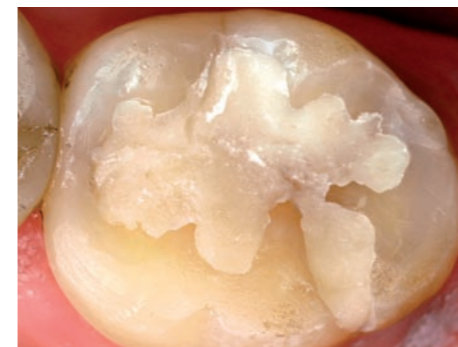
Easy Glaze®

A VARNISH FOR 3 APPLICATION AREAS

[2] Easy Glaze® - Aesthetics and functionality with glass ionomer restorations

If Easy Glaze is applied to a glass ionomer restoration, then the restoration receives protection from moisture within the first 48 hours, thus during the initial sensitivity to water. The restoration is noticeably smoother

and it achieves a higher end-hardness, so that both the abrasion of the restoration and discolouration are considerably reduced. An additional advantage of Easy Glaze on the glass ionomer restoration is that the freshly placed restoration is insulated, before taking an impression with an alginate for example.



Before: Glass ionomer restoration with the typical surface properties. The surface appears rough and dull.

Source: Dr. Marcelo Balsamo



After: The typically rough and dull appearing surface of glass ionomer materials is compensated for with Easy Glaze. The restoration refined with Easy Glaze feels not only smoother to the patient, but it also has an aesthetic appearance.

[3] Easy Glaze® – High gloss for provisional bridges

The application of Easy Glaze on temporary crowns and bridges makes high gloss polishing unnecessary. The tooth-like gloss of the temporary is created in only a short space of time with

Easy Glaze. The temporary additionally receives protection from discoloration. The colonisation of plaque on the temporary is also reduced due to the extremely smooth surface.



Before: Rough surface of an anterior temporary

Source: Dr. Marcelo Balsamo



After: Tooth-like shine of the temporary without high gloss polishing