

SOLUTIONS

elite double



Technical
A-Silicones for Duplication

Zhermack
Dental

ELITE DOUBLE is a complete range of **ZHERMACK** A-silicones **for all types of duplications**. Dental technicians rely on **ELITE DOUBLE** for its **ease of use** and its ability to provide **accurate** and **consistent results**.

elite double 8

elite double 16 Fast

elite double 16 Extra Fast

elite double 22

elite double 22 Fast

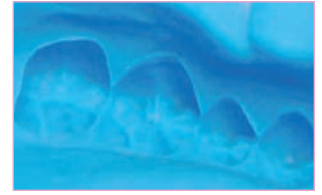
elite double 22 Extra Fast

elite double 32

elite double 32 Fast

elite double 32 Extra Fast

elite double



A RANGE SUITABLE FOR EVERY NEED

The wide range of **ELITE DOUBLE** silicones allows every need of the dental technician to be satisfied; it consists of **nine products** with **four different final hardnesses** and **three setting times**: normal, fast, and the innovative extra fast, the latter designed for automatic mixers.

Its **new colors**, combined with an high degree of opacity, have been optimised **to facilitate the reading of even the thinnest thicknesses**.

SOLUTIONS FOR FAST DUPLICATIONS

ZHERMACK recommends using **ELITE DOUBLE EXTRA FAST** with the **DOUBLE MIX ZHERMACK** automatic mixer for model duplication and removal in just 5 minutes.

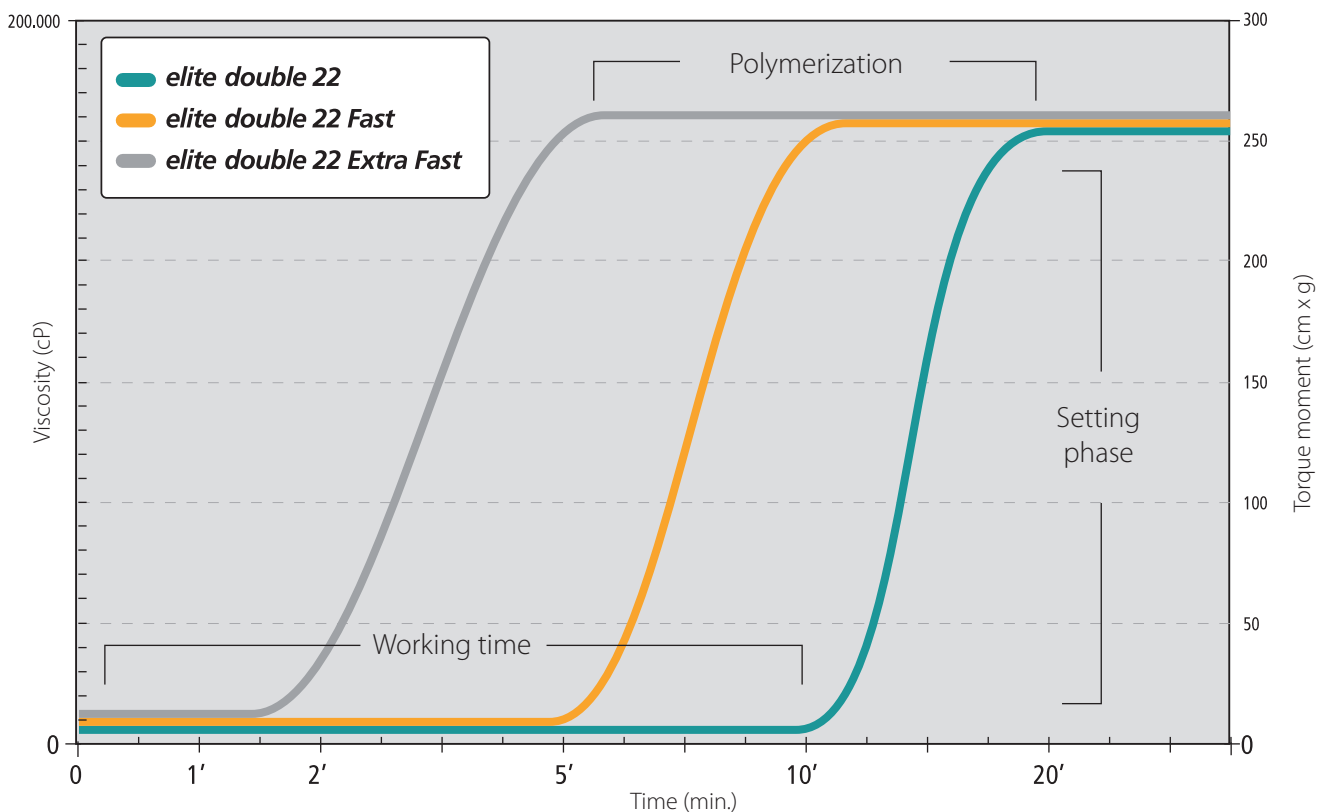


Product	Duplication of dies in integral ceramic coating	Duplication of models, generally in gypsum and/or resin	Duplication of models, controlled expansion coating	Duplication of models, free expansion coating
ELITE DOUBLE 8				
ELITE DOUBLE 16 FAST				
ELITE DOUBLE 16 EXTRA FAST				
ELITE DOUBLE 22				
ELITE DOUBLE 22 FAST				
ELITE DOUBLE 22 EXTRA FAST				
ELITE DOUBLE 32				
ELITE DOUBLE 32 FAST				
ELITE DOUBLE 32 EXTRA FAST				

SPEED AND ACCURACY

All of the silicones of the **ELITE DOUBLE** range are characterized by the **1:1 mixing ratio** and the **“snap set” effect: the constant maintenance of fluidity** throughout working time followed by a **rapid transition to the setting phase**. The snap set effect allows dental technicians to create **precise** and **fast** duplications with the advantage of an **effective working time**.

SNAP SET EFFECT



PHYSICAL-MECHANICAL BALANCED CHARACTERISTICS

Interpreting the needs of **dental technicians**, **ZHERMACK** research labs have developed **ELITE DOUBLE**, the duplication silicone that represents the **perfect balance** between physical and mechanical characteristics.

1. ELASTIC RECOVERY

Duplications produced with **ELITE DOUBLE** rapidly return to their original form thanks to their **excellent elastic recovery (99,95%)**.

2. TEAR STRENGTH AND LACERATION RESISTANCE

ELITE DOUBLE silicones have an elevated tearing resistance, even at very thin thicknesses, assuring the reproducibility of the most minute details.

3. PERFECT DUPLICATIONS

ELITE DOUBLE silicones offer **high detail reproduction capacity** with precision up to 2 μm .

4. RELIABLE DUPLICATIONS

ELITE DOUBLE is **dimensionally stable** and is **compatible with gypsums, resins, investments and acrylic resins**.

MAXIMUM LEVELS OF FLUIDITY

ELITE DOUBLE offers **constant fluidity** during the whole working time, **guaranteeing homogeneous bubble-free** casting for the most detailed reproductions.



TECHNICAL DATA

Product	Shore A Hardness after 24 hours	Mixing time manual / mechanical*	Working time*	Setting time*	Setting
<i>ELITE DOUBLE 8</i>	8	1' / 30"	10'	20'	
<i>ELITE DOUBLE 16 FAST</i>	16	1' / 30"	5'	10'	
<i>ELITE DOUBLE 16 EXTRA FAST</i>	16	for automatic dosing / mixing machines	1'30"	5'	
<i>ELITE DOUBLE 22</i>	22	1' / 30"	10'	20'	
<i>ELITE DOUBLE 22 FAST</i>	22	1' / 30"	5'	10'	
<i>ELITE DOUBLE 22 EXTRA FAST</i>	22	for automatic dosing / mixing machines	1'30"	5'	
<i>ELITE DOUBLE 32</i>	32	1' / 30"	10'	20'	
<i>ELITE DOUBLE 32 FAST</i>	32	1' / 30"	5'	10'	
<i>ELITE DOUBLE 32 EXTRA FAST</i>	32	for automatic dosing / mixing machines	1'30"	5'	

*The indicated values are measured at 23° C

Zhermack 



elite double solutions
Duplicating perfection

Zhermack 
Dental

elite double



Packaging

	250 g (Base) + 250 g (Catalyst)	1 Kg (Base) + 1 Kg (Catalyst)	5 Kg (Base) + 5 Kg (Catalyst)
ELITE DOUBLE 8	C400820	C400830	C400850
ELITE DOUBLE 16 FAST	C400825	C400831	C400847
ELITE DOUBLE 16 EXTRA FAST	-	-	C400848
ELITE DOUBLE 22	C400821	C400832	C400840
ELITE DOUBLE 22 FAST	C400823	C400834	C400842
ELITE DOUBLE 22 EXTRA FAST	-	C400838	C400849
ELITE DOUBLE 32	-	C400833	C400841
ELITE DOUBLE 32 FAST	-	C400836	C400843

Accessories

C400530 TENSILAB	1 bottle, 120 ml with spray
C400900 DISPENSER	Applicator for Elite Double 5 kg

Equipment

C309020 DOUBLEMIX	Automatic mixer 230V
C309021 DOUBLEMIX	Automatic mixer 115V
C309022 DOUBLEMIX	Automatic mixer 230V UK

BRANCHES

GERMANY

Zhermack GmbH Deutschland
Öhlmühle 10 - D-49448 Marl

T +49 (0) 54 43 / 20 33 - 0
F +49 (0) 54 43 / 20 33 - 11
info@zhermack.de
www.zhermack.de

POLAND

Zhermapol Sp. z o.o.
ul. Augustówka 14
02 - 981 Warszawa - Polska

T +48 22 858 82 72
+48 22 292 71 17
F +48 22 642 07 14
biuro@zhermack.com
www.zhermapol.pl

USA

Zhermack Inc.
P.O. Box 4195, River Edge
New Jersey 07661 - 4195

T +1 (877) 819 6206
+1 (732) 389 8540
F +1 (732) 389 8543
info@zhermackusa.com
www.zhermackusa.com