



**GLUMA® Desensitizer**  
More gain, less pain.

Giving a hand to oral health.



**KULZER**  
MITSUI CHEMICALS GROUP


# GLUMA® Desensitizer



The success story continues.

More gain, less pain.

One of the most impairing effects on your patients' daily well-being is hypersensitivity. Sweet or sour dishes, hot or cold morsels – the acute pain is unpleasant and rather blocked out.

For more than 20 years, one drop of GLUMA has been all you need to stop and prevent hypersensitivity. The result is fast and effective, without mixing, curing or repetitive steps. And your patients feel a prompt relief.




 Watch explainer video  
[kulzer.com/video-glumadesensitizer](http://kulzer.com/video-glumadesensitizer)



## GLUMA Desensitizer makes it a success story between you and your patients.

Your patients count on you to relieve them of their sensitivity issues. Just let them participate in the whole range of the GLUMA Desensitizer benefits.

GLUMA – From introduction to accolades				
First Desensitiser on the market			TOWNIE CHOICE AWARD	CLINICIAN'S REPORT
1987	1997, 2000, 2008 (Top Desensitizer)	2001, 2002, 2003, 2005, 2006, 2009, 2011, 2012	2003, 2004, 2005, 2006, 2007, 2008, 2009, 2010, 2011, 2012, 2013	2009 Top Effective Product for Class II 2011 Best products of 2011

GLUMA – Your benefits		
Feature	Benefit	GLUMA Desensitizer
One-step placement	No agitation or light curing required makes it easy to use and saves time	
Universally compatible	GLUMA can be used with all bonding and restorative materials, in any situation	
Economical	One drop, multiple applications	

# GLUMA® Desensitizer

Easily applied – widely applicable.

## How it works.

### ■ Desensitises:

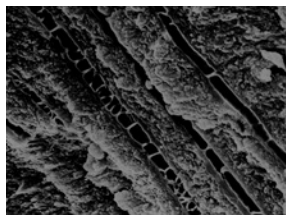
GLUMA is the only desensitizer proven to penetrate exposed dentinal tubuli up to 200 µm<sup>1</sup>. The result is the formation of multiple layers of protein septa that prevent intertubular fluid movements due to osmotic changes.

### ■ Inhibits bacteria:

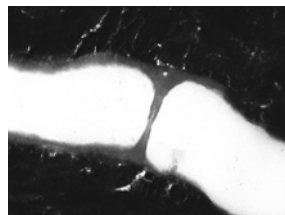
GLUMA provides a hermetic seal that acts as a microbial barrier, inhibiting bacterial growth.

### ■ Re-wet:

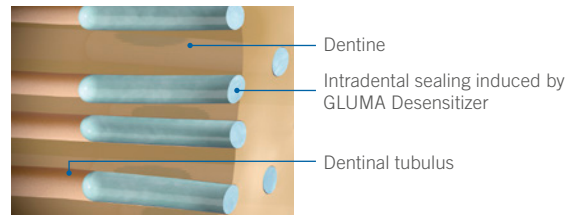
GLUMA resurrects collapsed collagenous fibres, improving the bond strength of many adhesives.



SEM of GLUMA-induced septa in dentinal tubuli.<sup>1</sup>



SEM magnification of a single GLUMA-induced septum in dentinal tube.<sup>1</sup>



Schematic representation of effect.

## Indications:

For the reduction or elimination of pain caused by hypersensitivity in exposed cervical areas that do not require restorations, and of dentine sensitivity after preparation of teeth to receive fixed prosthesis or restorations.

## Specific use for doctors and hygienists:

### Doctor/Assistant – Under every restoration

Use GLUMA below every restoration – direct and indirect – to ensure your patients the comfort they deserve.

- Below crowns.
- Bridges.
- Inlays and onlays.
- Veneers and temporaries.
- Margins around temporary crowns.
- Below all direct restorations.

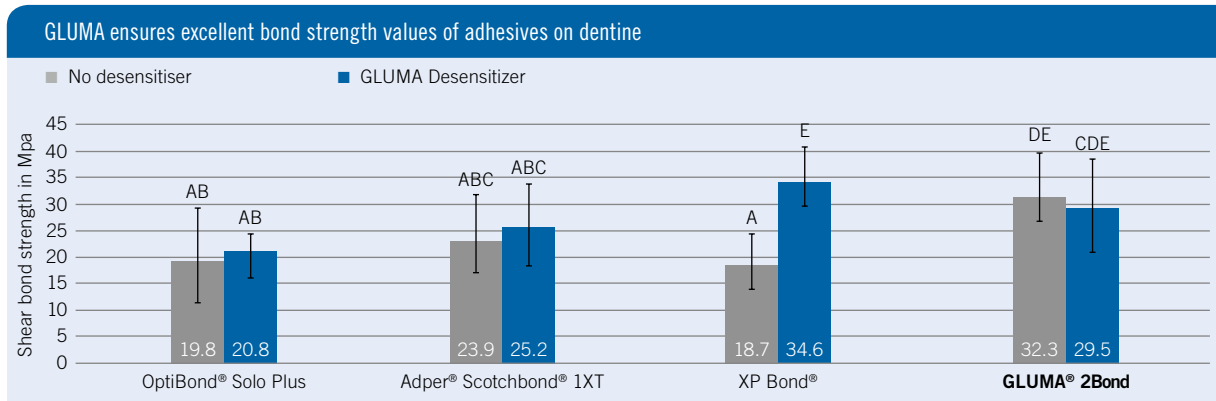
### Dental hygienist – Spot desensitise

With the control of a gel and confidence of GLUMA, your patients will appreciate the fast, effective and long-term results for a more comfortable prophylaxis.

- Cervical erosions.
- Exposed dentine surface.
- Tooth hypersensitivity caused by gingival recession.

<sup>1</sup> Similar letters represent non-statistically significant differences. Source: Schweppe J, Hoffmann M, Kastrati A, Utterodt A, Riedel N, Schaub M: Effect of GLUMA Desensitizer on Bond Strength of Etch & Rinse Adhesives. J Dent Res 90 (Spec Issue A): 3172, 2011.

GLUMA – Compatibility of GLUMA and adhesive systems.



Similar letters represent non-statistically significant differences. Source: Schewpe J, Hoffmann M, Kastrati A, Utterodt A, Riedel N, Schaub M: Effect of GLUMA Desensitizer on Bond Strength of Etch & Rinse Adhesives. J Dent Res 90 (Spec Issue A): 3172, 2011.

Find more clinical studies on our website  
[kulzer.com](http://kulzer.com)



# GLUMA® and GLUMA® Desensitizer

Precision right down ...

## GLUMA and GLUMA Desensitizer – More precise, more economical – with drop control.

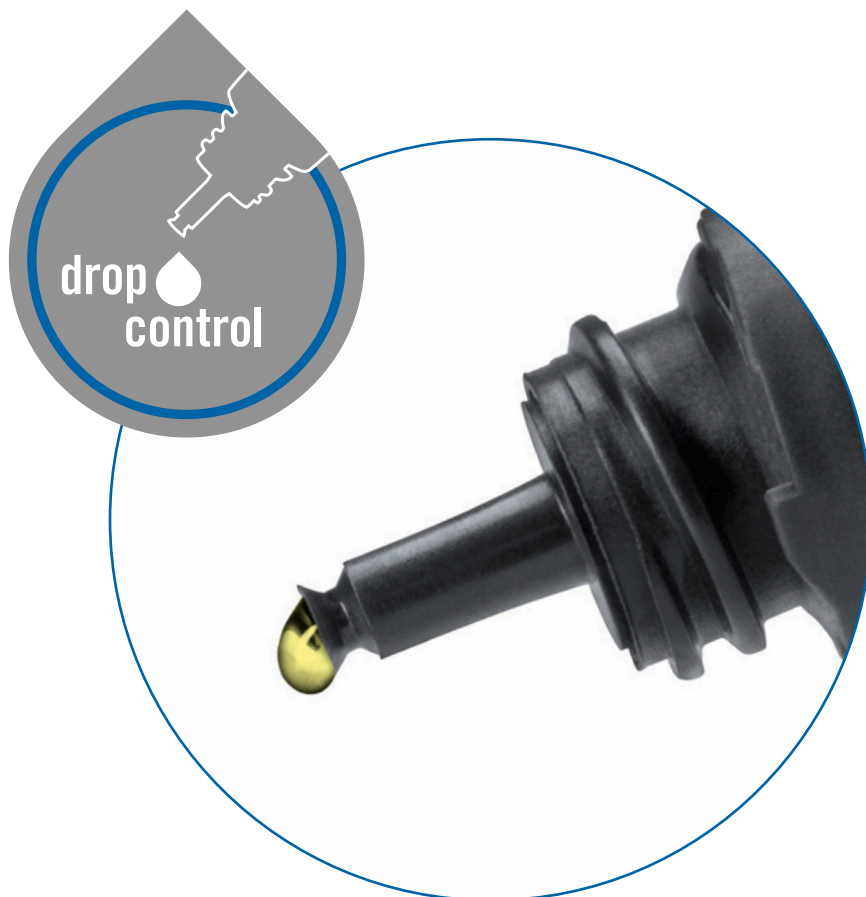
Have you and your assistant ever complained about that drop running down the dropper, jamming the cap? That becomes a thing of the past with our newly designed droppers for bonding agents and desensitizers. The notched design ensures a better cut of the drop. This not only prevents drops from running down the bottle. The new drop control entails several other benefits:

- No jamming or soiling of the opening.
- A very precise output of bonding agent: Depending on the applied pressure, you can produce a smaller or bigger drop – always with a clean cut.
- The amount of single drops goes up to 220 per bottle – saving you about 50 drops per bottle.

### Our quality seal: It cracks with the first opening

Every bottle of bonding agent and desensitizer now also comes with a quality seal, that cracks when you first open it. This seal tells you that the bottle fulfils our quality standards and is untapped.

It is always our aim to make your daily business more convenient and efficient. You will quickly come to appreciate the precise drop control and the opening protection. Why not enjoy the comfort of quality material in well-thought packaging?



# GLUMA® Desensitizer

Product range.

## Application guide GLUMA Desensitizer.



## GLUMA Desensitizer

### GLUMA Desensitizer

1 x 5 ml Bottle

Art. code: 66003764

### Application Brushes

2 x 50 pcs Applicator Tip

Slim/Regular

Art. code: 66064661



GLUMA Desensitizer



## GLUMA® Bond Universal – All-purpose convenience.

Our definition of universal bonding is convenience:

- **Unique moisture control and instant bonding success:** Due to the unique moisture control system and optimised monomer blend, GLUMA Bond Universal offers excellent dentine penetration and reliable bond strength.
- **The all-rounder for bonding matters:** GLUMA Bond Universal enables bonding of composite, precious metal, non-precious metal, zirconia or glass ceramic, and is compatible with light-cure, dual-cure and self-cure materials.
- **Easy and precise application:** Self-etch, total-etch or selective etch – the choice is yours. In addition, our specially designed drop control delivers just the amount of bonding agent you need.



### Contact in Germany

Kulzer GmbH  
Leipziger Straße 2  
63450 Hanau, Germany  
info.dent@kulzer-dental.com

OptiBond® Solo Plus is a trademark of Kerr Corporation • XP Bond® is a trademark of Dentsply DeTrey GmbH • Adper® Scotchbond® is a trademark of 3M Company