




# Prime&Bond universal™

## Universal Adhesive

		
20 sec Agitate slightly	5 sec Remove solvent	Cure ≥ 500 mW/cm <sup>2</sup> : 20 sec ≥ 800 mW/cm <sup>2</sup> : 10 sec



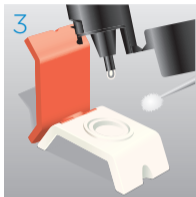
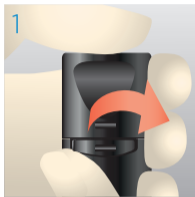
Caution, consult  
instructions for use



THE DENTAL  
SOLUTIONS  
COMPANY™

 Dentsply  
Sirona

## Step by step instructions:



### Preparation

Pull off originality seal.

Flip Top Bottle can be opened and closed with one hand. Do not screw off the cap.

Dispense Prime&Bond universal™ into a CliXdish™.

In a closed CliXdish™ Prime&Bond universal™ remains usable for up to 30 minutes.

To close the bottle, press down the cap until it locks in place with a perceptible “click”.



Cleaning &  
Disinfection  
Disassemble  
CliXdish™  
for reprocessing.

## OPTIONAL



Etching

Start etching at  
enamel margins.



Extend to dentin.

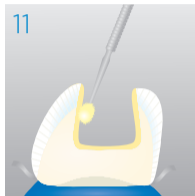


Rinsing

Remove acid gel  
and rinse.

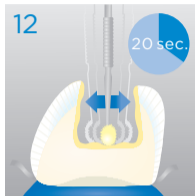


Remove excess  
water.  
**Do not  
desiccate!**



### Application

Apply **Prime&Bond universal™** to all cavity surfaces. **Avoid pooling.**



Keep **Prime&Bond universal™** slightly agitated for 20 seconds.



### Evaporation

Evaporate solvent with air for at least 5 seconds.



### Light-Curing

$\geq 500 \text{ mW/cm}^2 = 20\text{s}$   
 $\geq 800 \text{ mW/cm}^2 = 10\text{s}$

Dentsply DeTrey GmbH  
De-Trey-Str. 1  
78467 Konstanz  
GERMANY  
[www.dentsplysirona.com](http://www.dentsplysirona.com)

© 2016 Dentsply Sirona