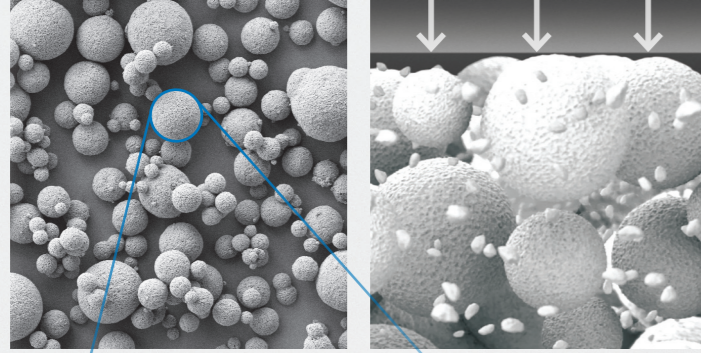


SEM picture of SphereTEC® spherical prepolymerized fillers. Their shape and size distribution create a ball bearing-like effect that enables excellent adaptation and sculpability.

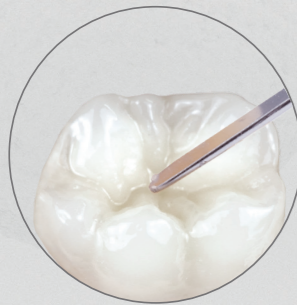


The micro-granulated structure of SphereTEC® filler is able to bind more free resin compared to usual fillers. Therefore Neo Spectra™ ST composite does not stick to hand instruments.

Neo Spectra™ ST universal composite  
with  
**SphereTEC® Technology.**  
Made with what matters.

Magnification of a 15 micron diameter SphereTEC® filler particle

Neo Spectra™ ST composite's performance is made possible by SphereTEC® filler technology, our proprietary method of manufacturing microsized, well-defined spherical superstructures, comprised of submicron glass. The SphereTEC® fillers' morphology, particle size distribution and surface microstructure deliver the benefits that really matter to dentists:



**OPTIMIZED HANDLING**  
for easy placement and shaping



**CHAMELEON BLENDING ABILITY**  
for simplified shade selection and matching



**PROVEN DURABILITY**  
with high polish and stain resistance for lasting esthetics

**Neo Spectra™ ST**  
Universal Composite Restorative

**HIGH VISCOSITY**

**Compules® Tips Intro Kit (HV)** **607.01.970**  
24 HV Compules® Tips (Gray) Assorted - (0.25 g each)  
(4 x A1; 4 x A2; 8 x A3; 4 x A3.5; 4 x A4)  
1 Compules® Tips Gun  
i-shade label  
1 Bottle Prime&Bond Universal™ Adhesive (2.5 mL)  
Accessories

**Syringe Intro Kit (HV)** **607.01.980**  
5 HV Syringes (Gray) Assorted - (3 g each)  
(A1; A2; A3; A3.5; A4)  
i-shade label  
1 Bottle Prime&Bond Universal™ Adhesive (2.5 mL)  
Accessories

**Syringe Eco Kit (HV)** **607.01.990**  
6 HV Syringes (Gray) Assorted - (3 g each)  
(3 x A2; 3 x A3)  
i-shade label  
1 Bottle Prime&Bond Universal™ Adhesive (2.5 mL)  
Accessories

Refills (HV)	Compules® Tips	Syringe
Shades (16 x 0.25 g)		(1 x 3 g)
A1 (= VITA® shades A1; B1; C1)	<b>607.01.971</b>	<b>607.01.981</b>
A2 (= VITA® shades A2; B2; D2)	<b>607.01.972</b>	<b>607.01.982</b>
A3 (= VITA® shades A3; C2; D3; D4)	<b>607.01.973</b>	<b>607.01.983</b>
A3.5 (= VITA® shades A3.5; B3; B4; C3)	<b>607.01.975</b>	<b>607.01.985</b>
A4 (= VITA® shades A4; C4)	<b>607.01.974</b>	<b>607.01.984</b>
BW (Bleach White)	<b>607.01.976</b>	

**LOW VISCOSITY**

**Compules® Tips Intro Kit (LV)** **607.01.870**  
24 LV Compules® Tips (Blue) Assorted - (0.25 g each)  
(4 x A1; 4 x A2; 8 x A3; 4 x A3.5; 4 x A4)  
1 Compules® Tips Gun  
i-shade label  
1 Bottle Prime&Bond Universal™ Adhesive (2.5 mL)  
Accessories

**Syringe Intro Kit (LV)** **607.01.880**  
5 LV Syringes (Blue) Assorted - (3 g each)  
(A1; A2; A3; A3.5; A4)  
i-shade label  
1 Bottle Prime&Bond Universal™ Adhesive (2.5 mL)  
Accessories

**Syringe Eco Kit (LV)** **607.01.890**  
6 LV Syringes (Gray) Assorted - (3 g each)  
(3 x A2; 3 x A3)  
i-shade label  
1 Bottle Prime&Bond Universal™ Adhesive (2.5 mL)  
Accessories

Refills (LV)	Compules® Tips	Syringe
Shades (16 x 0.25 g)		(1 x 3 g)
A1 (= VITA® shades A1; B1; C1)	<b>607.01.871</b>	<b>607.01.881</b>
A2 (= VITA® shades A2; B2; D2)	<b>607.01.872</b>	<b>607.01.882</b>
A3 (= VITA® shades A3; C2; D3; D4)	<b>607.01.873</b>	<b>607.01.883</b>
A3.5 (= VITA® shades A3.5; B3; B4; C3)	<b>607.01.875</b>	<b>607.01.885</b>
A4 (= VITA® shades A4; C4)	<b>607.01.874</b>	<b>607.01.884</b>
BW (Bleach White)	<b>607.01.876</b>	

**Neo Spectra™ ST Effects**  
Universal Composite Restorative

**Compules® Tips Intro Kit** **607.01.940**  
24 HV Compules® Tips (Gray) Assorted - (0.25g each)  
(12 x D1; 8 x D3; 4 x E1)  
Illustrated Technique Guide  
i-shade label

**Syringe Intro Kit (HV)** **607.01.950**  
3 HV Syringes (Gray) Assorted - (3 g each)  
(1 x D1; 1 x D3; 1 x E1)  
Illustrated Technique Guide  
i-shade label

Refills (HV)	Compules® Tips	Syringe
Shades (16 x 0.25 g)		(1 x 3 g)
D1 (use with A1; A2)	<b>607.01.942</b>	<b>607.01.952</b>
D3 (use with A3; A3.5; A4)	<b>607.01.943</b>	<b>607.01.953</b>
E1 (use with A1; A2; A3; A3.5; A4)	<b>607.01.941</b>	<b>607.01.951</b>

**Neo Spectra™ ST Shade Guide** **607.01.869**  
1 shade guide holder  
9 shade guide tabs (A1, A2, A3, A3.5, A4, BW, D1, D3, E1)

**Compules® Tips Gun** **606.65.900**  
1 Compules® Tips Gun

To learn more about  
Neo Spectra™ ST composite, visit  
[dentsplysirona.com/NeoSpectraST](https://dentsplysirona.com/NeoSpectraST)



**Neo Spectra™ ST**  
Universal Composite Restorative



Neo Spectra™ ST composite isn't just made with SphereTEC® filler technology, it's made with more of **what matters to you.**

### Neo Spectra™ ST Universal Composite Restorative

When we set out to create Neo Spectra™ ST composite, we asked clinicians what matters most to them. Certainly, it needs to be durable. But could the material handle better to save you time and frustration during placement? And what if shade selection was simplified, minimizing stock and creating efficiencies during the procedure? Could this composite offer outstanding stain resistance to keep patients satisfied? **Introducing Neo Spectra™ ST composite made to deliver what matters to you.**

74% of dentists complain about handling properties of composites such as adaptability and stickiness.<sup>2</sup>

## efficiency matters

### Versatile handling, made even easier to work with.

Thanks to SphereTEC® filler technology, Neo Spectra™ ST composite offers optimized handling characteristics in both a high and low viscosity to accommodate your preference and technique for placement efficiency.

- Doesn't stick to hand instruments
- Adapts easily to cavity surfaces
- Easy to sculpt and shape
- Excellent slump resistance



## longevity matters

### Durable esthetic results.

SphereTEC® filler takes lasting results to the next level. With over 24 million restorations placed globally, the Neo Spectra™ ST formula has a proven record of clinical success.

- Excellent stain resistance
- Proven wear resistance

57% of dentists frequently see composite staining at recall appointments.<sup>5</sup>

## esthetics matter

### Exceptional esthetics, made even easier to create.

The unique construction of SphereTEC® filler brings an enhanced chameleon blending ability to Neo Spectra™ ST composite for simplified shade matching. It also enables faster finishing and polishes to an excellent luster.

- Five CLOUD shades cover the full VITA® range<sup>3</sup>
- Save money and shelf space by reducing inventory
- Polish to a high gloss with the Enhance® Finishing and Enhance® PoGo® Polishing systems

**i** For esthetically demanding anterior cases, **Neo Spectra™ ST Effects**<sup>1</sup> two additional opacities work with **Neo Spectra™ ST** in a simplified composite layering technique. Go to [dentsplysirona.com/NeoSpectraSTEffects](https://dentsplysirona.com/NeoSpectraSTEffects) to learn more.

Dentists spend up to 28% of Class II chair time on shade selection and finishing and polishing.<sup>2</sup>

80% of patients are reportedly aware of color differences between restored and adjacent natural teeth.<sup>4</sup>



Five universal CLOUD shades  
VITA® Shades

A1			A2			A3			A3.5			A4		+ BW (BLEACH WHITE)		
A1	B1	C1	A2	B2	D2	A3	C2	D3	D4	A3.5	B3	B4	C3	A4	C4	
A1	B1	C1	A2	B2	D2	A3	C2	D3	D4	A3.5	B3	B4	C3	A4	C4	

**Neo Spectra™ ST Composite with SphereTEC® filler technology is made with what matters to you.**

1. Data on file. 2. Dentsply Sirona Restorative, Europe composite user survey 2015, n=297. 3. VITA is not a registered trademark of Dentsply Sirona. 4. Joiner, 2004. 5. Class II Composite Insights, Greater New York Dental Show Survey, 2016.