

The genuine article is always the best

Dürr Dental original accessories and consumables





The perfect fit

Patient comfort, hygiene and image quality should be the focus of X-ray diagnostics in every clinic. When it comes to accessories and consumables for your image plate scanner, you should therefore always rely on original quality from Dürr Dental. Perfectly coordinated components will ensure a long service life for your image plates and keep your image plate scanner working perfectly.



VistaPosition PSP

The new parallel holder system from Dürr Dental



The holder system has been specially developed for use with image plates and combines a number of practical new solutions in a single product. Specially developed bite blocks fix the image plates securely and gently in place. Thanks to the optimised ergonomic shape of the bite block, the

image plate does not need to be folded or squashed when it is inserted in the holder, thus improving the longevity of the image plate. Assembly of the individual components could not be easier thanks to the high quality finish and colour coding of the individual parts.

Accurate positioning of the image plates

- Reproducibility of images

Long-lasting image plate durability

- Protection against bending of image plates
- Comfortable insertion
- Sturdy fixing in the bite block

Distortion-free imaging

- Ideal for endo control images

Compatibility

The VistaPosition PSP holder system is compatible with almost all commonly used image plate systems and intraoral X-ray units.



The consistent colour coding scheme ensures that you can always find the correct indicator arm even in stressful situations – making the assembly process incredibly easy.

The available range covers the following indications:

- Anterior – blue
- Posterior – yellow
- Bitewing – red
- Endo – green

All parts of VistaPosition are suitable for immersion/thermal disinfection and can be autoclaved.

VistaPosition PSP Titanium

This premium product is designed to meet the highest requirements and uses titanium for the indicator arm. Not only does this result in a significant weight reduction for increased patient comfort, but it also facilitates reliable, accurate positioning for intraoral images.

VistaPosition PSP

The stainless steel version of the indicator arm makes VistaPosition PSP the classic all-rounder for any practice.



VistaScan IQ Image Plate*

With the latest generation of VistaScan offering RFID functionality and VistaSoft AI, VistaScan IQ image plates offer you comprehensive AI-assisted functionality – for much easier day-to-day use in your practice, increased user comfort and consistently high image quality.

* For VistaScan devices that have been developed for use with VistaScan IQ image plates (e.g. VistaScan Ultra View, VistaScan Mini 2.0)



Automatic recognition of the anatomical region**

VistaSoft AI rotates intraoral images into the correct anatomical position.

Automatic detection if the wrong side is exposed

VistaSoft AI recognises when the image plate has been exposed from the wrong side and recommends mirroring of the image in the software.

Automatic checking of image plate quality

VistaSoft AI automatically checks the quality of the VistaScan IQ image plate and recommends a replacement if necessary.

QR code simplifies inventory

The QR code on the VistaScan IQ image plate makes it easy to track the condition of all the image plates used in the practice.

Excellent image quality with 100% active area

In contrast to intraoral sensors, with a VistaScan IQ image plate 100% of the image surface is available for diagnosis.

Automatic tooth detection**

With the aid of artificial intelligence, all the teeth captured in the image are automatically detected and saved in the dental chart.

Clear patient assignment to each scanned image

The SmartScan workflow makes assigning the image to the correct patient even easier and more reliable than before.*

* Function available with VistaScan Mini View 2.0 and VistaScan Mini Easy 2.0

** Function depends on the software version. Available from VistaSoft 3.0.20, also for VistaScan Image Plates Plus.

VistaScan Image Plate Plus**

VistaScan Image Plate Plus has been successfully tried and tested for many years and is a dependable companion for all VistaScan units without RFID functionality. In contrast to other image receiver technologies, the five different formats offer the perfect solution for all indications. As a result, VistaScan Image Plate Plus not only delivers high patient acceptance, but also makes sure that users are satisfied as well.

** For VistaScan devices that are developed for use with VistaScan Image Plate Plus (e.g. Mini View, VistaScan Perio and VistaScan Combi)



Excellent image quality with 100% active area

In comparison to other digital image receivers, 100% of the image surface of the VistaScan Image Plate Plus is available for diagnosis.

Patient comfort

In comparison to other image receivers, the thin and flexible image plate ensures maximum patient comfort and is easy to position, even in difficult situations.

Long service life

Ever since it was first launched, VistaScan Image Plate Plus has been robust, durable and reliable. Its service life can be extended by combining it with original VistaScan Light Protection Covers, as these two products have been optimally designed for each other.

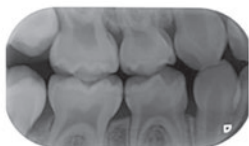
The format is the key

With our extensive portfolio of sizes (S0 – S4) you always have the correct format to hand for every indication.



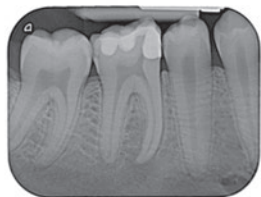
Size 0

- Imaging of anterior teeth for children



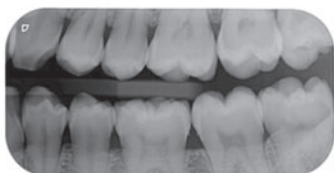
Size 1

- Imaging of posterior teeth or bitewing imaging for children
- Imaging of anterior teeth with tight space conditions for adults (vertical)
- Endo images with tight space conditions (vertical)



Size 2

- Imaging of posterior teeth or bitewing imaging for adults
- Imaging of anterior teeth with generous space conditions for adults
- Endo images with generous space conditions



Size 3

- Optimised format for bitewing images to increase diagnostic reach



Size 4

- Occlusal images to optimally depict e.g. displaced teeth or salivary gland stones

VistaScan Light Protection Cover Plus

Light protection covers play an important role in maximising the service life of the image plates. Various independent institutes have tested their quality characteristics, and the tests have shown that VistaScan Light Protection Covers Plus ensure a long-lasting, high image quality for your intraoral X-ray images.



Scratch-resistant

Reliably protects the delicate surface of the image plate from external mechanical influences. Standard: DIN EN ISO 1518-1.

Protection of the image plate

The original VistaScan light protection cover was developed to prevent image plates from contamination and soiling. This ensures safe patient treatment and a long service life for the image plates. Standard: DIN EN 62366.

Opacity

Reliably protects the exposed image plate against light to maximise image quality and diagnostic accuracy. Standard: DIN 6125.

Biologically safe

The VistaScan Light Protection Cover Plus has passed the relevant biological safety testing in accordance with the standard EN ISO 10993-1, which ensures that your patients are kept safe. The light protection covers also have a neutral taste to keep them as pleasant for your patients as possible.

Germ-resistant

Reliably prevents contamination of the image plate. Standard: DIN 58953-6.

Fully equipped

VistaScan IQ packs				
VistaScan IQ Pack S0	VistaScan Image Plates IQ S0	2 pcs	2 x 3 cm	2130106051
	VistaScan Light Protection Cover Plus	1000 pcs		
VistaScan IQ Pack S1	VistaScan Image Plates IQ S1	2 pcs	2 x 4 cm	2130106151
	VistaScan Light Protection Cover Plus	1000 pcs		
VistaScan IQ Pack S2	VistaScan Image Plates IQ S2	2 pcs	3 x 4 cm	2130106251
	VistaScan Light Protection Cover Plus	1000 pcs		
VistaScan IQ Pack S3	VistaScan Image Plates IQ S3	2 pcs	2.7 x 5.4 cm	2130106351
	VistaScan Light Protection Cover Plus	1000 pcs		
VistaScan IQ Pack S4	VistaScan Image Plates IQ S4	1 unit	5.7 x 7.6 cm	2130106451
	VistaScan Light Protection Cover Plus	100 pcs		

VistaScan Image Plate Plus*				
VistaScan Image Plates Plus S0	VistaScan Image Plates Plus S0	2 pcs	2 x 3 cm	2130-040-50
	VistaScan Image Plates Plus ID S0	2 pcs	2 x 3 cm	2130-040-60
VistaScan Image Plates Plus S1	VistaScan Image Plates Plus S1	2 pcs	2 x 4 cm	2130-041-50
VistaScan Image Plates Plus S2	VistaScan Image Plates Plus S2	4 pcs	3 x 4 cm	2130-042-50
	VistaScan Image Plates Plus ID S2	4 pcs	3 x 4 cm	2130-042-60
	VistaScan Image Plates Plus S2	12 pcs	3 x 4 cm	2130-042-55
VistaScan Image Plates Plus S3	VistaScan Image Plates Plus S3	2 pcs	2.7 x 5.4 cm	2130-043-50
VistaScan Image Plates Plus S4	VistaScan Image Plates Plus S4	1 unit	5.7 x 7.6 cm	2130-044-50

VistaScan Light Protection Cover Plus*				
VistaScan Light Protection Cover Plus S0	VistaScan Light Protection Cover Plus S0	100 pcs		2130-080-00
	VistaScan Light Protection Cover Plus, White S0	100 pcs		2130-080-50
VistaScan Light Protection Cover Plus S1	VistaScan Light Protection Cover Plus S1	100 pcs		2130-081-00
VistaScan Light Protection Cover Plus S2	VistaScan Light Protection Cover Plus S2	100 pcs		2130108251
	VistaScan Light Protection Cover Plus S2	300 pcs		2130-082-00
	VistaScan Light Protection Cover Plus S2	1000 pcs		2130-082-55
	VistaScan Light Protection Cover Plus, White S2	300 pcs		2130-082-50
	VistaScan Light Protection Cover Plus, White S2	1000 pcs		2130108256
VistaScan Light Protection Cover Plus S3	VistaScan Light Protection Cover Plus S3	100 pcs		2130-083-00
VistaScan Light Protection Cover Plus S4	VistaScan Light Protection Cover Plus S4	100 pcs	VistaScan Combi/Mini View/	2130-084-00
	VistaScan Light Protection Cover Plus S4	100 pcs	Mini Plus/VistaScan Perio Plus	
VistaScan Bite protector S4	VistaScan Bite protector S4	100 pcs		2130-074-03

*VistaScan Image Plate Plus

VistaPosition PSP Anterior/Posterior Kit Titanium				
Indicator arm	Anterior Titanium	1 unit		2130100500
Indicator arms	Posterior Titanium	2 pcs		
Bite blocks	Anterior	2 pcs		
Bite blocks	Posterior	2 pcs		
Aiming ring	Anterior	1 unit		
Aiming rings	Posterior	2 pcs		

VistaPosition PSP Bitewing Kit Titanium				
Indicator arm	Bitewing Titanium	1 unit		2130100600
Bite block	Bitewing S0/S1	1 unit		
Bite blocks	Bitewing S2 Horizontal	2 pcs		
Bite block	Bitewing S3	1 unit		
Aiming ring	Bitewing	1 unit		

VistaPosition PSP Endo Kit Titanium			
Indicator arm	Endo Titanium	1 unit	2130100700
Bite blocks	Endo Q2/Q4	2 pcs	
Bite blocks	Endo Q1/Q3	2 pcs	
Aiming ring	IntraEndo	1 unit	

VistaPosition PSP Anterior/Posterior Kit			
Indicator arm	Anterior	1 unit	2130101500
Indicator arms	Posterior	2 pcs	
Bite blocks	Anterior	2 pcs	
Bite blocks	Posterior	2 pcs	
Aiming ring	Anterior	1 unit	
Aiming rings	Posterior	2 pcs	

VistaPosition PSP Bitewing Kit			
Indicator arm	Bitewing	1 unit	2130101600
Bite block	Bitewing S0/S1	1 unit	
Bite blocks	Bitewing S2 Horizontal	2 pcs	
Bite block	Bitewing S3	1 unit	
Aiming ring	Bitewing	1 unit	

VistaPosition PSP Endo Kit			
Indicator arm	IntraEndo	1 unit	2130101700
Bite blocks	Endo Q2/Q4	2 pcs	
Bite blocks	Endo Q1/Q3	2 pcs	
Aiming ring	IntraEndo	1 unit	

VistaPosition Anterior/Posterior – accessories			
Indicator arm	Anterior Titanium	1 unit	2130100351
Indicator arm	Posterior Titanium	1 unit	2130100350
Indicator arm	Anterior	1 unit	2130100427
Indicator arm	Posterior	1 unit	2130100426
PSP bite blocks	Anterior	4 pcs	2130100352
PSP bite blocks	Posterior	4 pcs	2130100353
Aiming ring	Anterior	1 unit	2130100354
Aiming ring	Posterior	1 unit	2130100355

VistaPosition Bitewing – accessories			
Indicator arm	Bitewing Titanium	1 unit	2130100344
Indicator arm	Bitewing	1 unit	2130100428
PSP bite blocks	Bitewing S0/S1	4 pcs	2130100345
PSP bite blocks	Bitewing S2 Vertical	4 pcs	2130100346
PSP bite blocks	Bitewing S2 Horizontal	4 pcs	2130100347
PSP bite blocks	Bitewing S3	4 pcs	2130100348
Aiming ring	Bitewing	1 unit	2130100349

VistaPosition Endo – accessories			
Indicator arm	Endo Titanium	1 unit	2130100341
Indicator arm	IntraEndo	1 unit	2130100429
PSP bite blocks	Endo Q2/Q4	2 pcs	2130100342
PSP bite blocks	Endo Q1/Q3	2 pcs	2130100386
Aiming ring	IntraEndo	1 unit	2130100343

Want to know more?

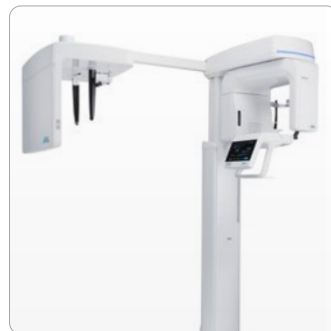
» www.duerrdental.com



VistaScan



VistaIntra



VistaPano



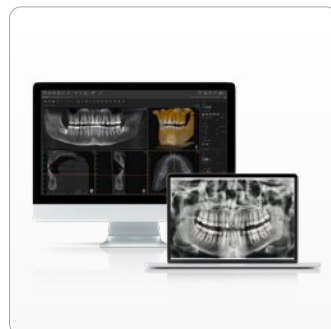
VistaVox



VistaCam



VistaRay



VistaSoft



Accessories

DÜRR DENTAL SE
Höpfigheimer Str. 17
74321 Bietigheim-Bissingen
Germany
www.duerrdental.com
info@duerrdental.com

 **DÜRR
DENTAL**
THE BEST, BY DESIGN