



SendoSeal MTA

Root Canal Sealer

Simple. Safe. Bio-compatible.



SendoSeal MTA



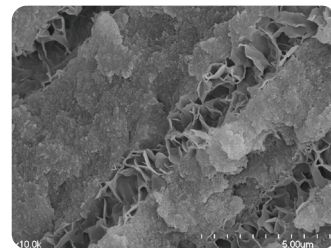
SendoSeal MTA is a root canal sealer designed to permanently seal the root canal. The sealer is bio-compatible and MTA-based, which means that it sets by absorbing moisture in the root canal. With its high pH value (pH 10–12), SendoSeal MTA has an excellent antibacterial effect, which helps with the healing process.

The product is supplied as a syringe of premixed material, which makes it simple to use. In studies*, SendoSeal MTA has been shown to have outstanding physical and biological properties.

SendoSeal MTA root canal sealer contributes to the formation of hydroxylapatite in the dentinal tubules.



Figure: Cannula with bent tip.



Representative scanning electron microscope image (x1000) of gutta-percha with SendoSeal MTA.

Simple Application

SendoSeal MTA root canal sealer comes premixed in a syringe. The material is applied directly to the root canal with the thin cannula, which ensures smooth and simple handling. SendoSeal MTA has outstanding flowability, making it easy to fill the entire root canal.

Dimensional Stability and Hermetic Sealing

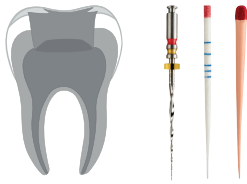
SendoSeal MTA root canal sealer is dimensionally stable and does not dissolve over time. The root canal remains sealed, protecting against the risk of any new infection.

High Radiopacity

SendoSeal MTA is very radiopaque, making it easy to distinguish the root filling and assess the result of the X-ray.

**Physical properties and biocompatibility of an injectable calcium-silicate- based root canal sealer: in vitro and in-vivo study by Eun-Su Lim Young-Bae Park, Young-Sun Kwon, Won-Jun Shon, Kwang-Won Lee, Kyung-San Min och Physicochemical properties of Epoxy Resin Based and Bioceramic Based root canal sealers by Ju- Kyung Lee, Sang Won Kwak, Jung-Hong Ha WooCheol Lee, Hyon Cheol Kim*

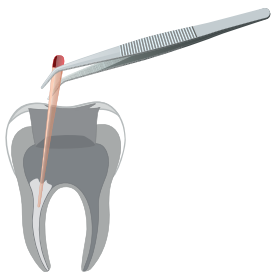
Your Step-by-Step Guide to Use



1. Prepare and rinse the root canal. Dry the root canal with paper points. Try in and select a suitable gutta-percha point.



2. Apply the SendoSeal MTA in the root canal directly using the thin cannula. Using back-fill technique, slowly withdraw the cannula while simultaneously applying the material.



3. Insert the gutta-percha point into the root canal. Use a pumping motion to disperse the material throughout the root canal. When the gutta-percha point reaches the instrumentation length, hold the gutta-percha point in place for a further one to two seconds. With the apex open, move the gutta-percha point down without using any pumping motion.

4. Finally, remove the excess gutta-percha from the cavity.

SendoSeal MTA has a high radiopacity of over 8 mm Al, which makes it easy to distinguish the root filling and assess the result of the X-ray.



Indicator image before treatment.



12 months after treatment.

Photo with courtesy of Dr Vahid Khayyami, endodontics specialist, Helsingborg, Sweden



REF	Product name
300001	SendoSeal MTA

DIRECTA

Directa AB, Sweden | www.sendoline.com

The contents of this brochure, including layout and images, are protected by copyright.
Sendoline, S1, S5, S5 Rotary Files, S-Files / S-fil, including the S symbol and NiTi-S, are all trademarks / logos of Directa.
© 2021 Directa AB. All rights reserved.