



## Structur 2 SC · Structur Premium

EXCELLENT TEMPORARIES WITH STRUCTUR

# Structur

## SIMPLE TO USE

Reliable products are required to provide your patients with prosthetic treatments, especially with regard to temporaries. Your patients' masticatory function, phonetics and aesthetics must be guaranteed until the definitive restoration is fitted.

For the patient, temporaries which are closely similar to the natural tooth are an important step on the way to the definitive treatment. Patients increasingly judge these no longer according to function only (protection of the prepared tooth and guaranteed masticatory function), but also with regard to aesthetics (they should match shade and shape of the tooth). Long-term temporaries frequently substitute the dental prosthesis for weeks or months when extensive restoration work is carried out. The properties of the material for temporary restorations are of particular importance in such cases.

### **Tooth shade and natural appearance**

Temporary restorations should be "invisible"; they should be indistinguishable from natural teeth. A diverse range of eight tooth shades together with the natural fluorescence of Structur make it possible to fulfil these requirements.

### **Tooth-like hardness**

Of course, the patient would like to be able to eat with the temporaries. Unrestricted food intake is essential for the patient and crucially influences well-being and compliance with the ongoing treatment.

### **High material stability**

The utilized material must be able to withstand chewing pressure for weeks or months, without giving way or breaking when loaded. This applies in particular to crown margins thinning towards the edge and to other delicate structures of the restoration.

### **Quick and simple application**

The fabrication of temporary restorations must be easy to integrate into the process of fabricating prostheses in the surgery: Simple, bubble-free mixing even of small amounts, i.e. for a single crown, as well as larger amounts for multi-unit treatments, are not a problem even for your assistant, thanks to the presentation in the 1:1 cartridge and the tried and tested mixing tips.

Mixing errors, shade variations and mixed-in air bubbles belong to the past, thanks to the choice of presentation of either the cartridge or QuickMix syringe with the coordinated mixing tips.

### **Short period of retention in the mouth**

Structur 2 SC and Structur Premium can be removed from the oral cavity after only 1.5 minutes from commencement of mixing, and after a mere further 2.5 minutes they reach a sufficient level of hardness for finishing and polishing.

### **Finishing and polishing**

Temporary restorations must be finished, whether they are fabricated directly or in the laboratory. The reason is that overfilling of the impression or deep-drawing tray is essential in the fabrication of the temporary. The resulting excess material must be removed and the prepared surfaces smoothed and polished.

For the surgery, the hardness of the material used for temporary restorations is important in two ways: On the one hand, the initial hardness must be as high as possible after the material has set, to permit finishing and incorporation of the restoration; on the other hand, the patient is unlikely to treat the temporary with great care after leaving the surgery. High stability values of materials for temporary restorations that are reached only hours after setting thus do not reflect the reality in the surgery.

All Structur products can be finished and polished with fine, cross-cut carbide burs, fine metal or sandpaper separating disks, goat hair brushes and textile buffers. Carefully polished, smooth temporaries impede adhesion of plaque and simultaneously facilitate cleaning for the patient.

# Structur

## QUICK FABRICATION

### **Tooth-like brilliance**

The surfaces of temporary restorations exhibit a texture different from that of a natural tooth. Modern developments now also permit tooth-like brilliance and “high gloss” surfaces on temporaries. Easy Glaze, for instance, is very easy to use for this, and it achieves an immediately impressive result.

### **Corrections and repairs**

Margins of crowns in particular, also those on temporary restorations, determine the success or failure of the prosthetic treatment to a large degree.

With subgingivally prepared teeth, there is no support provided to the gingiva by the dental hard tissue. If this condition is not taken into account during fabrication of the temporary, then potential consequences are gingival recession, exposed preparation boundaries and thus aesthetic complications from the now visible margin of the restoration.

In the anterior region, this is not tolerated by many patients and it thus frequently leads to fabrication of a new temporary, with the associated time and financial expenditure caused to your surgery. In contrast, carefully examining the crown margins and possibly carrying out additional finishing are less costly and time-consuming.

This includes lining the crown margins with a thin layer of material that supports and shapes the gingiva in the area of the preparation boundary. The natural emergence profile on the gingival line thus remains intact. Cutting the area free from the impression before filling is too imprecise and frequently leads to overextended margins on the temporaries and thus also to the mostly undesirable effect of compression of the gingiva!

Structur 2 SC and Structur Premium are composites and can be seamlessly adapted to the existing conditions in a quick and efficient manner, without additional application of a bond.

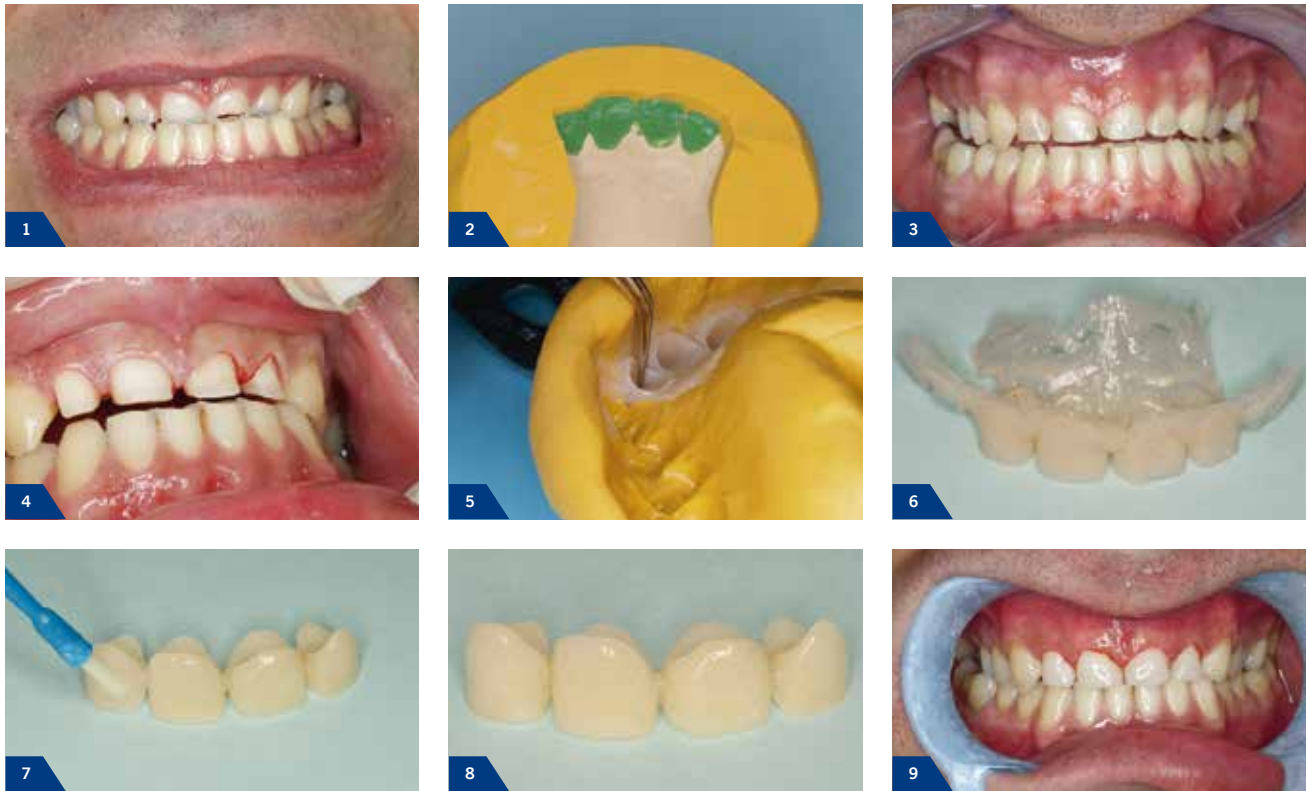
The situation is the same with regard to repairs and small modifications that can arise from treatment of more complex prosthetic restorations: Crowns and bridges made from Structur 2 SC or Structur Premium can be quickly and efficiently corrected and repaired with the same material or a light-curing composite without any problems.

### **Cost-effective**

Structur Premium and Structur 2 SC enable you to control the cost of fabricating temporary restorations: Structur 2 SC is the right choice of product for individual crowns, short bridges in the posterior region with a short to moderate retention time in the mouth, and for cost-conscious patients. For patients with high aesthetic expectations, Structur Premium is the appropriate product for long-term temporaries and for long bridges and restorations in the anterior region. Structur 2 in the QuickMix syringe is perfect where only a small amount is required for smaller temporaries such as individual crowns or partial crowns and for corrections.

# Structur

## CLINICAL CASES



Source: Dr. Wentaschek, University Medical Center, Department of Prosthodontics, Johannes Gutenberg University Mainz, Germany

Severely abraded maxillary front showing chipping and defects on teeth 12 - 22 (Fig. 1). The situation is aesthetically and functionally unsatisfactory. The maxillary front was rebuilt from wax on the model and transferred to a silicone key (Fig. 2). Restoration of the incisors with the assistance of the composite key (Fig. 3). Preparation of teeth 12 - 22 for crown treatment after a new silicone impression has been taken (Fig. 4). Fabrication of the provisional restorations with Structur 2 SC. Finishing of the Structur crowns with Easy Glaze (Fig. 7) and subsequent incorporation. Distinct improvement of the clinical situation through the temporaries, even before further treatment is carried out (Fig. 9).



Source: Dr. Wentaschek, University Medical Center, Department of Prosthodontics, Johannes Gutenberg University Mainz, Germany

Teeth 13, 11, 21 and 22 have been prepared for a bridge. Tooth 12 is missing; 11 has been furnished with a post build-up. Temporary restoration made from Structur Premium in situ (Fig. 1); situation without the provisional bridge (Fig. 2). Modelling of the gingiva through accurately designed bridge unit (Fig. 3) with the emergence profile of a natural tooth. Structur Premium supports such measures through its tissue-friendly properties and because it facilitates precise, appropriate finishing.

## Structur

### EVEN BETTER WITH EASY GLAZE



Source: Dr. Wentaschek, University Medical Center, Department of Prosthodontics, Johannes Gutenberg University Mainz, Germany

Unsatisfactory aesthetic situation due to missing incisors and mesial inclination. The black triangle between the central incisors is particularly noticeable and unpleasing (Fig. 1). The clinical case shows the prepared and thereby axially corrected teeth (Fig. 2), as well as the treatment with temporaries made from Structur 2 SC (Fig. 3). A considerable improvement on the initial situation, with visible aesthetic benefit provided already by the temporaries.

## Easy Glaze®

### NANO-FILLED LIGHT-CURING COATING FOR SURFACE SEALING

#### Easy Glaze® – Visible brilliance

Easy Glaze is a light-curing, high-gloss nano-filled protective varnish for surface finishing of composite and glass ionomer materials.

Structur Premium and Structur 2 SC are composites and thus ideally suited for surface finishing with Easy Glaze: After application, the protective varnish with its perfectly coordinated viscosity penetrates the smallest recesses and anomalies, smoothes them out and leaves behind a high-gloss surface following polymerisation with a conventional polymerisation light, without polishing or modification of the occlusion. Application couldn't be simpler, and it permanently and recognisably improves the aesthetic result: The sealed surface impedes plaque adhesion, facilitates oral hygiene and increases the quality of the temporary to an extent that is visible to your patient.

#### Advantages

- Glossy and aesthetic surfaces
- Easy to use
- Provides protection against discolouration



#### Presentation

- |          |  |
|----------|--|
| REF 1016 | Bottle 5 ml, accessories                 |
| REF 2245 | Easy Brush, application brushes, 50 pcs. |
| REF 2315 | Mixing palettes, 20 pcs.                 |

### A material for luting temporaries must meet several criteria

- Reliable luting
- Simple mixing and uncomplicated application
- Quick application
- Biocompatibility
- No inhibition of composite cements

### Provisional luting of temporaries

The demands on temporary luting materials are contradictory. On the one hand, secure luting is expected; on the other hand, it must be guaranteed that the restoration fitted in this way will be easy to remove.

The preparation wound must be closed without irritation and the material must not impact on subsequent definitive luting carried out with frequently used luting composites. Eugenol therefore has to be ruled out as an ingredient, because it acts as an inhibitor in the polymerisation of composites.

### Indications

**Provicol® / Provicol® QM / Provicol® QM Plus / Provicol® C**  
Eugenol-free luting cement with calcium hydroxide for temporary mountings

The calcium hydroxide (Ca(OH)<sub>2</sub>) contained in Provicol has a bacteriostatic effect and does not impact negatively on the subsequent definitive cementation of the restoration, not even if composite luting cements are used.

Provicol is available in three different types of presentation, enabling you to select the one that can best be integrated into your chairside work routine.

### Provicol® QM / Provicol® QM Plus

- Application from the QuickMix syringe
- Quick and always bubble-free mixing

### Provicol® C

- Presentation in 65 g cartridges
- Ideal for many units in surgeries with a high rate of prosthodontics

### Provicol®

- Handmix version
- The proven Provicol in tubes

### Product advantages

- Quick application
- Contains calcium hydroxide
- Eugenol-free, thus ideal before adhesive luting with composite cements



### Presentation

REF 1075	Tube 2 × 25 g (base / catalyst)	REF 1098	QuickMix syringe 5 ml, accessories	REF 1076	Cartridge 2 × 65 g, accessories
REF 1078	Tube 10 × 25 g (base / catalyst)	REF 1099	Set QuickMix syringe 3 × 5 ml (2 × Provicol QM, 1 × Provicol QM Plus), accessories	REF 2158	Dispenser – type 2
REF 1074	QuickMix syringe 5 ml, accessories	REF 2261	Dispenser – QuickMix	REF 2185	Mixing tips type 6, 50 pcs.
REF 2261	Dispenser – QuickMix	REF 2189	Mixing tips type 10, 50 pcs.		

## Structur Premium

### HIGHLY AESTHETIC COMPOSITE MATERIAL FOR THE FABRICATION OF PROVISIONAL CROWNS AND BRIDGES

#### Indications

Fabrication of highly aesthetic crowns, bridges, inlays and onlays

#### Advantages

- Aesthetic like porcelain
- High stability of shape and shade
- Natural fluorescence
- Brilliant gloss
- As hard as enamel
- Extremely high fracture resistance
- Perfect handling
- Convenient work steps, easy to trim and polish
- Long-term use of temporary possible
- Very economical due to minimal material loss

#### Presentation

REF 1710 Set cartridge 75 g A3, dispenser type 2, accessories

REF 2158 Dispenser – type 2

REF 2185 Mixing tips type 6 for cartridge, 50 pcs.

Shade	Cartridge 75 g, mixing tips type 6	Cartridge 5 × 75 g, mixing tips type 6
A1	REF 1712	–
A2	REF 1713	–
A3	REF 1714	REF 1719
A3.5	REF 1717	–
B1	REF 1718	–
B3	REF 1715	–
BL	REF 1716	–



# Structur 2 SC

## PROVISIONAL CROWN AND BRIDGE MATERIAL THAT MEETS ALL DEMANDS

### Indications

#### Structur 2 SC

Universal, economical crown and bridge material for temporary crowns, inlays and onlays

#### Structur 2 QM

Universal, economical crown and bridge material for temporary crowns, inlays and onlays, presented in the QuickMix syringe



### Presentation Structur 2 SC

- REF 1478 Set cartridge 75 g A3, dispenser type 2, accessories
- REF 1499 Set cartridge 75 g A2, dispenser type 2, accessories
- REF 2158 Dispenser – type 2
- REF 2185 Mixing tips type 6 for cartridge, 50 pcs.

Shade	Cartridge 75 g, mixing tips type 6	Cartridge 5 × 75 g, mixing tips type 6
A1	REF 1479	–
A2	REF 1480	REF 1492
A3	REF 1481	REF 1491
A3.5	REF 1490	–
B1	REF 1482	–
B3	REF 1483	–
C2	REF 1486	–
BL	REF 1485	–

### Advantages

- Quick and easy handling
- Economical and hygienic application
- Short setting time in the mouth
- Good shape and shade stability
- Excellent aesthetics
- Wide range of shades
- Natural fluorescence
- Simple to finish and polish



### Presentation Structur 2 QM

- REF 2261 Dispenser – QuickMix
- REF 2189 Mixing tips type 10 for QuickMix syringe, 50 pcs.

Shade	QuickMix syringe 8 g, mixing tips type 10
A1	REF 1309
A2	REF 1310
A3	REF 1311
B1	REF 1312

VOCO GmbH  
Anton-Flettner-Straße 1-3  
27472 Cuxhaven  
Germany

Freecall: 00 800 44 444 555  
Fax: +49 (0) 4721-719-140

info@voco.com  
www.voco.dental

Available from: