

THE BEGO WAX AND MODELLING RANGE

Partners in Progress





Jörg Fasel,
Product Manager Consumables
BEGO Dental

The BEGO wax and modelling programme meets the highest dental technology standards.

Wax is used on a daily basis in dental laboratory work. The wax-ups fabricated by the dental technician are like the signature of your dental laboratory. Even in this age of digital CAD/CAM technology, wax still has an important role to play.

In actual fact, 'wax' is a very broad term covering the most diverse type of waxes. One way of defining a particular wax is by the nature of the raw material it is made from, i.e. vegetable, animal, mineral or synthetic waxes. Another approach is to define waxes in terms of their chemical or physical properties. But what all waxes have in common is that they soften or liquefy when heated and solidify when cooled to room temperature.

In dental technology, mixtures of very different types of wax are required in most cases in order to create the ideal properties to suit the specific indication. Bite registration waxes, for example, remain opaque when heated, guaranteeing perfect modelling properties. Milling waxes are hard and can be very easily shaved or milled. Model casting waxes are very easy to mould without changing the chosen profile shape or surface structure

We have the right wax to meet every need. But don't just take our word for it – try out our range of waxes for yourself!

4 good reasons, for choosing BEGO waxes

- 1 For more than a century our product range has included waxes which meet the highest dental technology standards.
- 2 The “Made in Germany” seal of quality is your guarantee of superb products. We manufacture special dental waxes from high quality raw materials in our own production facilities using tried and tested formulations with quality control at every stage.
- 3 All the products in the BEGO range of waxes are geared to the needs and wishes of practitioners. It goes without saying that our waxes burn out leaving no residue and provide a high level of adaptability with secure bonding.
- 4 In addition, our modelling range is rounded off with a range of special waxes, accessories and modelling tools.

Index

Partial denture technique	4–10
Preparation wax	4
Blocking-out wax	5
Smooth Casting wax	5
Stippled Casting wax	6
Way profiles	7
Wax Profile assortment	7
Wax border strips with retentions	8
Anatomical wax bar Profiles for lower-jaw partial denture frames	8
Wax retentions for lower-jaw partial denture frames	9
Way clasp profiles	9
Wax grid retentions for maxillary partial denture frames	10
Wax wire for sprues	10
<hr/>	
Crown and bridge technique	11–17
Dipping wax	11
Cervical wax	11
Crown wax	12
ScanBlock and ScanWax	13
Occlusal wax	14
Aroma occlusal wax	15
Milling wax	15
FC Modelling wax for pressable ceramics	16
SecuPress Ring system	16
Rapid-Wax-System	17
Rapid-Ringless-System	17
<hr/>	
Modelling system	18–19
BEGO Modelling wax for prosthetics	18
Isocera Separating liquid for the crown and bridge technique	18
Plastic sticks and plastic hollow sticks for distribution channels	18
Aurofilm Wetting agent for investment and releasing the surface tension of silicone duplicating moulds	19
Adapta deep-drawing system	19
Rapidi modelling knife	19

BEGO is one of the pioneers of the partial denture technique using CoCr alloys. A large number of useful special waxes and profiles complete the BEGO partial denture system in a practical way. In combination with the BEGO alloy brands Wironit® and WIRONIUM® and the BEGO investment materials Wirovest® and WiroFine, these waxes and profiles enable the partial denture technique to be applied efficiently and with perfect results every time.

Preparation wax for the partial denture technique

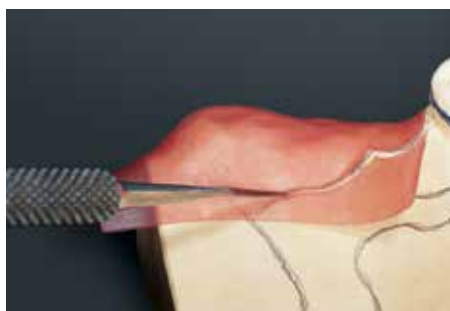
- The preparation wax is exceptionally malleable, allowing it to be adapted to the master model perfectly and with firm adhesion, which saves having to use an additional wax adhesive
- The exemplary shape retention and edge strength of the preparation wax, with a high solidification point of approx. 70 °C, mean that it can be used with duplicating hydrocolloid at working temperatures of 55 °C
- Simple removal from the master model following duplication rounds off the user-friendly working characteristics perfectly

Product details				
Availability	Contents	Presentation	Qty	REF
Preparation wax, colour: red, sheet size 17.5 x 8 cm				
0.5 mm	15 sheets	pack	1	40036
0.6 mm	15 sheets	pack	1	40037
0.7 mm	15 sheets	pack	1	40038



Modelling tip

If it is planned to duplicate under pressure, the best results are obtained if the saddles are inundated all round.



Preparation wax



Model ready for duplicating



Blocking-out wax

Blocking-out wax

- This wax was developed for blocking out undercuts, for creating clasp steps and for relieving the strain on critical areas of the model. It is tailored to meet the special requirements of the partial denture technique.
- This blocking-out wax can be easily scraped and cut, is hard and thus ensures the dimensionally-stable, well-defined reproduction of clasp steps on the investment model
- The boiling-out temperature of approx. 90 °C, the setting temperature of approx. 68 °C and the melting temperature of approx. 80–85 °C guarantee reliability and resilience during duplication, even at high temperatures

Product details

Availability	Contents	Presentation	Qty	REF
Blocking-out wax, colour: pink	70 g	tin	1	40032



Modelling tip

The edges of wax steps should be formed using a sharp instrument at an angle of 90 °C so that the wax clasp profile receives a defined position.

Smooth casting wax

- Simple, crease-free adaptation
- Adheres firmly to the investment model and burns out leaving no residue
- The high transparency of the wax makes for optimal clarity of the construction markings on the master model and saves unnecessary, time-consuming corrections to the wax-up
- Smooth casting wax is used to vary the required thickness in combination with stippled surfaces or when the clinical indication so requires

Product details

Availability	Contents	Presentation	Qty	REF
Smooth casting wax, colour: green, Sheet size 17.5 x 8 cm				
0.25 mm	15 sheets	pack	1	40091
0.3 mm	15 sheets	pack	1	40092
0.4 mm	15 sheets	pack	1	40093
0.5 mm	15 sheets	pack.	1	40094
0.6 mm	15 sheets	pack	1	40095



Wax clasp step

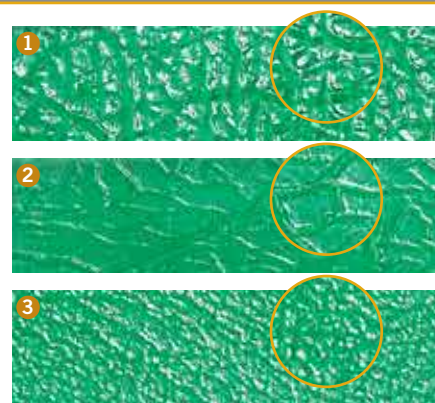


Smooth casting wax

Stippled casting wax

- Tried and tested wax for modelling the bases of upper partial dentures
- Can be easily adapted and adheres firmly to the investment model with no additional wax adhesive
- The stippled casting wax is available in three different surface textures – from fine to coarse – and allows customisation of the surface shape as required by the practitioner
- The individual stippling of the cast partial denture base facilitates the gripping of food and reduces the foreign body sensation for the patient's tongue

Product details			
Availability	Contents	Presentation	Qty
Stippled casting wax, colour: green Sheet size 15 x 7.5 cm	15 sheets	pack	1
	REF	REF	REF
	1 coarse veined	2 medium veined	3 fine veined
0.35 mm	40160	40192	40210
0.4 mm	40170	40193	40220
0.5 mm	40180	40194	40230
0.6 mm	40190	40195	40240



Modelling tip
Before making the model, the investment material can be sprayed with Durofluid to improve adhesion of wax profiles still further. The modelling wax can be adapted more easily if, in addition, the model is preheated to 35 °C.



Crease-free adaptation of the fine stippled casting wax



Coarse casting wax over smooth casting wax ensures defined plate thickness



Medium stippled casting wax placed centrally in the deep palate



Continuous clasps




Casting strip 2.0 x 6.5 mm



Beading wire 0.8 mm

Wax profiles

- Tried and tested wax profile shapes make for easy, customised wax-up for a wide range of indications in dental technology
- BEGO wax profiles are very easy to mould, do not bend up and can be easily fixed to the investment model
- The wax formula is designed to provide high internal stability and thus offers remarkable protection against inadvertent deformation and constriction during shaping
- The wax profile assortment comes in a handy box containing the most frequently required thicknesses and profiles

Product details					
Availability	Contents	Presentation	Qty	REF	
Wax profiles, colour: green, length 17 cm					
● 0.8 mm beading wire	30 g	pack	1	40261	
● 1.0 mm beading wire	40 g	pack	1	40263	
● 1.35 mm sprues	50 g	pack	1	40301	
● 1.6 x 4.0 mm bars, lower jaw	75 g	pack	1	40421	
● 2.0 x 4.0 mm bars, lower jaw	85 g	pack	1	40422	
● 1.15 x 1.75 mm clasps, continuous clasps	50 g	pack	1	40441	
● 2.0 x 4.5 mm casting strips, upper jaw (small bases)	90 g	pack	1	40462	
● 2.0 x 6.5 mm casting strips, upper jaw	125 g	pack	1	40461	

Flat casting strips – optimally adapted for the casting of maxillary bases

The creation and dimensioning of the sprues are just as important as a precise wax-up. In the case of transverse bars, horseshoe-shaped and large maxillary partial denture bases, the flat casting strips have proven particularly successful.

Tip: Wax profiles 2.0 mm x 6.5 mm for sprues on large maxillary wax-ups, wax profiles 2.0 mm x 4.5 mm for delicate maxillary wax-ups

Wax profile assortment

- The BEGO wax profile assortment includes the most widely used profiles for wax-ups, which come in a practical box with compartments
- Medium-hard wax quality

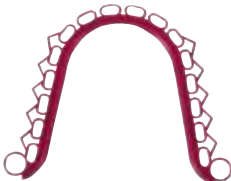
Product details			
Availability	Presentation	Qty	REF
Wax profile assortment, colour: green, length 17 cm consisting of:	pack	1	40250
● 0.8 mm beading wire = 6 g			
● 1.35 mm Gusskanäle = 10 g			
● 2.0 x 4.0 mm bars, lower jaw = 17g			
● 2.0 x 6.5 mm casting strips, upper jaw = 2 x 25 g			
● 1.15 x 1.75 mm clasps, cont. clasps = 10 g			



Wax border strips with retentions

- Wax edge strips with retentions considerably reduce the modelling time for the bases of maxillary partial dentures. The prefabricated shapes can be easily adapted to meet individual requirements
- A great advantage is that the border strip can easily be shaped as desired since the size can be varied by trimming the tips of the retentions
- The wax is so supple that it can be shaped easily and reliably as required onto the duplicate model

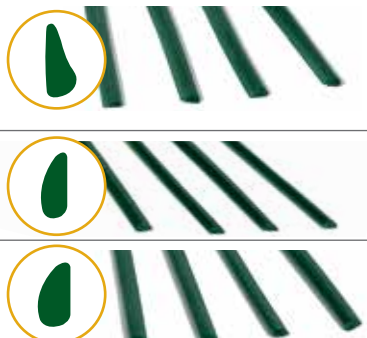
Product details				
Availability	Contents	Presentation	Qty	REF
Wax border strips, colour: red, length 17 cm	25 pieces	Pack	1	40025



Anatomical wax bar profiles for lower-jaw partial denture frames

- Three different wax bar profiles for customised shaping of the sublingual bar according to the patient or model status
 - The half-teardrop shape of the anatomical wax profile in particular has been tried and tested for many years. It is easy to finish and polish
 - The rounded upper edge and concave shape facing the tongue plus the anatomical lower-jaw profile make for good patient acceptance
- Tip:** For periodontal prophylaxis, a distance of 4 mm should be maintained between the gingival margin and the upper edge of the bar in the case of lower-jaw partial denture bases.

Product details				
Availability	Contents	Presentation	Qty	REF
Anatomical wax bar profile, colour: green, length 17 cm, 1.8 x 4.2 mm	15 pieces	pack	1	40075
Small wax bar profile, colour: green, length 17 cm, 1.6 x 4.0 mm	75 g	pack	1	40421
Standard wax bar profile, colour: green, length 17 cm, 2.0 x 4.0 mm	85 g	pack	1	40422



Modelling tip

Adapt the bar using Wiroasil duplicating silicone in the shape of a mortar pestle to prevent air gaps between the wax pattern and duplicate model.



Anatomical wax bar profile



Wax hole retention

Wax retentions for lower-jaw partial denture frames

- Which retention profile shape of the various BEGO wax retentions is determined by the specific indication and clinical requirements
- Excellent restoration results can be achieved in both mandibular and maxillary modelling
- Both partial and total dental prostheses can be modelled easily and efficiently
- BEGO wax retentions are available in packs of 15 or in the economical laboratory pack containing 150 pieces

Product details					
Availability	Contents	Presentation	Qty	REF	
Colour: red, length: 17 cm					
1 Wax hole retentions	15 pieces	pack	1	40620	
Wax hole retentions (laboratory pack)	150 pieces	pack	1	40630	
2 Wax retentions with round holes	15 pieces	pack	1	40051	
Wax retentions with round holes (laboratory pack)	150 pieces	pack	1	40052	

Wax clasp profiles

- Wax clasp profiles for the premolars or molars ensure a firm grip as well as giving the partial denture the necessary stability
- All clasp profiles have an optimum anatomical shape. The half-teardrop cross-sections have proved to be very effective in preventing food residues from becoming lodged
- BEGO wax clasp profiles are very easy to mould, do not bend up and can be easily and securely fixed on the investment model with an optimum degree of adhesion
- BEGO wax clasp profiles help save time during modelling. The wax shapes can be customised by shortening or lengthening them

Product details					
Availability	Contents	Presentation	Qty	REF	
Wax clasp profiles, colour: green, (280 clasps)	10 sheets	pack	1	40020	
Wax patterns / wax clasp profile colour: green (200 clasps)					
1 for premolars	10 sheets	pack	1	40021	
2 for molars	10 sheets	pack	1	40022	
3 for Bonyhard clasps	10 sheets	pack	1	40024	
Wax patterns ring clasp profile colour: green					
1 straight	10 sheets	pack	1	40029	
2 curved	10 sheets	pack	1	40023	

Wax grid retentions for maxillary partial denture frames

- ① Wax grid retentions – permit the simple and effective shaping of retentions to total or partial dentures. They guarantee a high level of security in the connection between the resin and the partial denture plate. The large grid retentions facilitate very economical use of material
- ② the same as ① but with a larger plate
- ③ Wax diagonal grid retentions – for shaping the retentions for partial dentures. This particularly advantageous shape offers a very high degree of security in the connection between the resin and the dentures
- ④ + ⑤ Wax grid retentions with holes – can be used as retentions for partial maxillary dentures and as a reinforcement for acrylic full maxillary acrylic dentures

Product details					
Availability	Contents	Presentation	Qty	REF	
Wax grid retentions, colour: red					
① 60 x 42 mm	25 pieces	pack	1	40060	
② 100 x 100 mm	10 pieces	pack	1	40062	
③ 75 x 150 mm	10 pieces	pack	1	40061	
④ for partial upper-jaw dentures, 70 x 70 mm	20 pieces	pack	1	40066	
⑤ for upper-jaw dentures, 70 x 70 mm	20 pieces	pack	1	40039	

Wax wire for sprues

- BEGO wax wires are very easy to shape, do not bend up, and burn out leaving no residue. This allows casting of stress-free constructions and use with pressable ceramics.
- The wax formula is designed to provide high internal stability and offers remarkable protection against inadvertent deformation and constriction during bending
- The wax wire facilitates economical use because only the length that is actually required can be cut off
- An opening in the side of the outer packaging allows the wax wire to be fed directly from the pack, thus offering optimal protection against undesirable impurities and deformations

Product details					
Availability	Colour	Contents	Presentation	Qty	REF
Wax wire, medium-hard					
Ø 2.5 mm, approx. 50 m	green	250 g	roll	1	40085
Ø 3.0 mm, approx. 36 m	green	250 g	roll	1	40086
Ø 3.5 mm, approx. 28 m	green	250 g	roll	1	40087
Ø 4.0 mm, approx. 21 m	green	250 g	roll	1	40088
Ø 5.0 mm, approx. 17 m	green	250 g	roll	1	40089



Modelling tip

To reduce tension after hot forming, set the wire aside for a short period.



Wax grid retentions with holes Ø 2,5 mm



Wax wire for sprues

BEGO offers a comprehensive range of waxes for crown and bridge work. The properties of the modelling waxes - individually developed by dental technicians for dental technicians – are perfectly tailored to the respective range of indications. In combination with BEGO investment materials (Bellavest® SH) and BEGO alloys (Wirobond® 280) they produce impressive casting results with excellent fit.

Dipping wax

- Dipping wax forms wax copings in bridge and crown work, providing the basis for precision dental restorations
- Minimal shrinkage and optimum viscosity are key features of BEGO dipping waxes, guaranteeing reproducible results with uniform wall thicknesses and high accuracy of fit
- The two wax versions maintain a very consistent viscosity even when the wax is kept at standby temperature for a longer period, ensuring precise control of the required coping thickness at all times
- Green and red dipping waxes contain only organic components and can be safely used in the ceramic pressing technique
- The increased elastic recovery and strength of the hard elastic red dipping wax maintains the stability of the copings, even in critical situations
- ① Working temperature of the green dipping wax 70 to 75 °C
- ② Working temperature of the hard elastic dipping wax approx. 95 °C

Product details					
Availability	Colour	Contents	Presentation	Qty	REF
① Dipping wax	green	150 g	pack	1	40009
② Dipping wax hard-elastic	red	70 g	tin	1	40155



Modelling tip

Warm the plaster stump to approx. 35 °C before dipping. Best dipping results can be achieved when you dip the object quickly, then pull it out slowly and evenly.

Cervical wax






- BEGO cervical wax for cervical edges in eggplant (aubergine) is a tension-free wax on which extremely high demands are placed during modelling
- BEGO cervical wax is completely tension-free after modelling and is therefore highly recommended for details on cervical edges of crowns, precision parts and as undercut wax of inlays
- The cervical wax burns out leaving no residue, making it suitable for the ceramic pressing technique as well
- Thanks to the finely adjusted formulation and careful monitoring of all raw material properties, the cervical wax undergoes only very slight shrinkage after the individual layers have been applied
- BEGO cervical wax has a very low limit of elasticity, so any deformation only has a plastic effect. This allows safe wafer-thin modelling up to the preparation margin
- Solidification temperature approx. 62 °C

Product details					
Availability	Colour	Contents	Presentation	Qty	REF
Cervical wax	eggplant	70 g	tin	1	40112



Crown wax

- Hard and medium-hard wax compositions in blue, dark blue, grey and dentine ensure optimum waxing up of all types of crowns
- Three shades provide for colour preferences and facilitate customised contouring
- The balanced shrinkage of BEGO crown and bridge waxes is reduced to a minimum by the selective use of high-quality raw materials and rigorous production management
- BEGO crown wax is particularly suitable for waxing up with either an open flame or an electric wax knife
- Both waxes (medium-hard/hard) have ideal carving properties and solidify quickly, enabling them to be applied very quickly. The choice of version depends essentially on the technician's preference, the ambient conditions (room temperature) and the stability required when removing the model or when investing.
- BEGO crown wax can also be used for inlays thanks to its working characteristics
- The solidification point of hard crown wax is approx. 61 °C and that of medium-hard crown wax approx. 60 °C

Product details						
Availability	Colour	Contents	Presentation	Qty	REF	
Crown wax hard	blue	70 g	tin	1	40111	
Crown wax hard	grey	70 g	tin	1	40145	
Crown wax hard	dentin	70 g	tin	1	40146	
Crown wax medium-hard	dark blue	70 g	tin	1	40115	
Crown wax medium-hard	grey	70 g	tin	1	40147	
Crown wax medium-hard	dentin	70 g	tin	1	40148	

Modelling tip

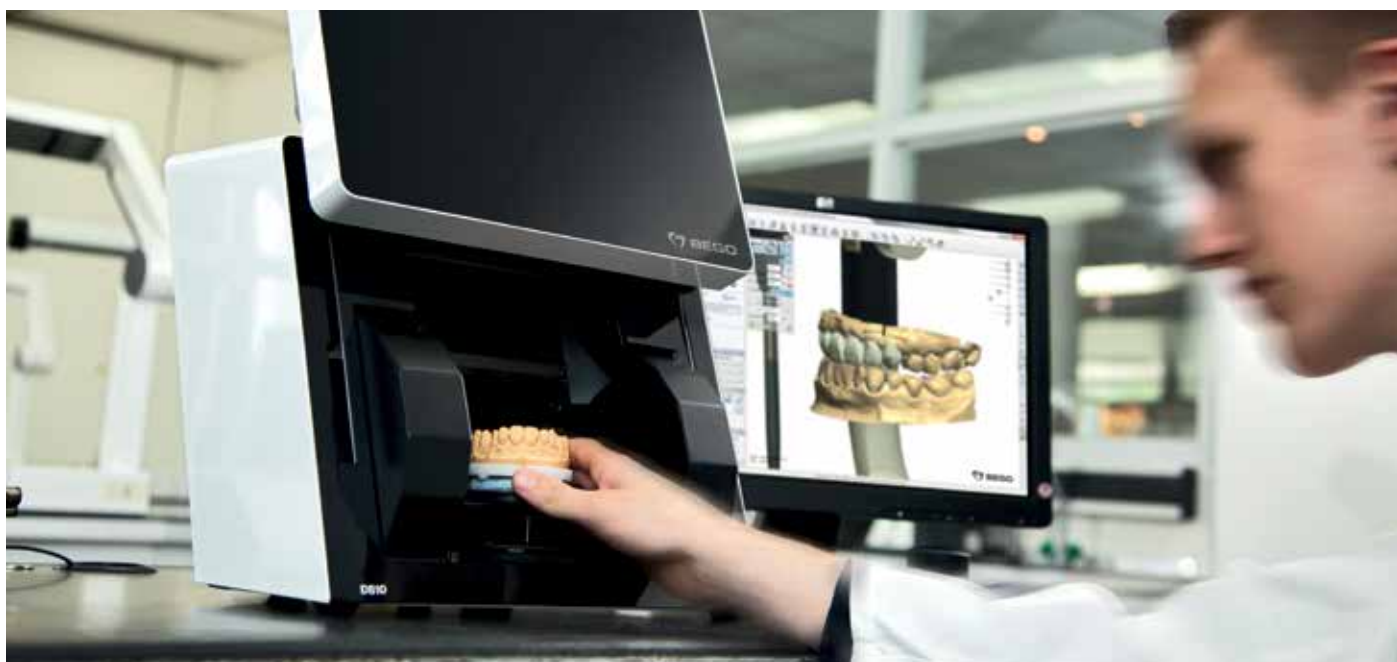
Applying small portions of wax reduces the wax contraction.

ScanBlock and ScanWax

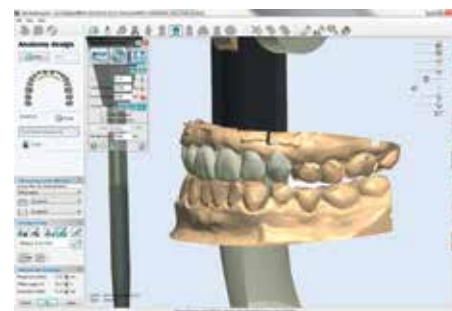
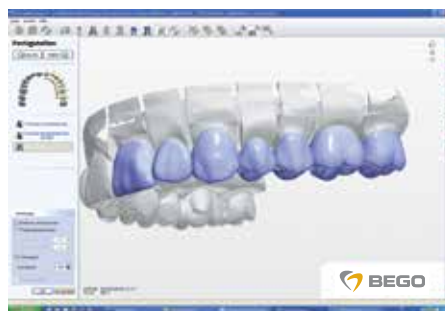
- An increasing number of waxed-up restorations are being scanned using the CAD/CAM technique. The use of highly opaque wax is the most effective way of preventing translucent effects and ensuring optimal data generation. Precision dental restorations using the CAD/CAM technique can only be fabricated if there is high data density.
- The high degree of hardness and opacity of BEGO ScanBlock wax also makes it ideal for waxing up restorations fabricated by the milling technique, and for modelling standard crowns and bridges
- A wax with very high opacity is required for blocking out small cavities on the plaster die in CAD/CAM work. Translucent effects cause data loss during scanning. ScanBlock ensures data density, even with thin layers of wax.
- Solidification temperature 62 °C

Product details

Availability	Colour	Contents	Presentation	Qty	REF
ScanWax	dentin	70 g	tin	1	40151
ScanBlock	sky-blue	70 g	tin	1	40152



ScanWax dentin



Wax scan in the virtual articulator

Occlusal wax

- Ideal for efficient and aesthetic modelling of occlusal surfaces. BEGO occlusal wax is available in two pastel shades to facilitate the shaping of occlusal surfaces. The choice of shades is a matter of personal preference. The advantage of light pastel shades, as with all BEGO occlusal waxes, is that they provide high-contrast visualisation of waxed-up occlusal surface contours, thereby greatly facilitating the implementation of occlusal concepts.
- A high degree of hardness is necessary when modelling occlusal surfaces in order to prevent compression at the contact points between maxilla and mandible
- BEGO occlusal wax is very ductile because of its high surface tension. Wax drops form a ball when solidified, enabling even the most delicate occlusal contours to be waxed.
- BEGO occlusal waxes do not stain, are not sticky and are very easy to mill. They also meet the highest dental technology standards.
- Solidification point approx. 59 °C

Product details					
Availability	Colour	Contents	Presentation	Qty	REF
Occlusal wax	grey	70 g	tin	1	40114
Occlusal wax	dentin	70 g	tin	1	40118



Modelling tip

The wax-up can easily be given a high-gloss, degreased finish before the investment process by using diluted washing-up liquid and a soft brush.

Aroma occlusal wax

- Aroma occlusal wax is an advanced formulation from the BEGO occlusal wax range with optimised hardness and individual fragrances. The fragrances of wild berries and vanilla provide a surprisingly pleasant working ambience.
- These occlusal waxes do not stain, are not sticky and are very easy to mill
- Solidification temperature approx. 59 °C

Product details					
Availability	Colour	Contents	Presentation	Qty	REF
Aroma occlusal wax Wild berries	grey	70 g	tin	1	40120
Aroma occlusal wax Vanilla	dentin	70 g	tin	1	40123



Milling wax

- BEGO milling waxes in green and grey are specially formulated to meet the particular challenges of machine processing
- The ideal hardness of the wax prevents shavings from adhering to the wax-up and clogging up the milling tool, so the view of the milled surface is unobstructed at all times
- The grey milling wax is also formulated with the maximum possible opacity, thus enabling optimal visual assessment of the milled surfaces and contours
- The ideal motor speed for milling wax is approx. 2,000–5,000 rpm, depending on blade geometry and diameter of the milling tool used
- The solidification temperature of both milling wax versions is approx. 62 °C

Product details

Availability	Colour	Contents	Presentation	Qty	REF
Milling wax	green	70 g	tin	1	40113
Milling wax	grey	70 g	tin	1	40119



Modelling tip

The application of Isocera separating liquid (page 18) to the milling tool prevents the blades from becoming clogged or wax shavings adhering to the tool, so you avoid surface inaccuracies right at the milling stage.



Green milling wax



Grey milling wax being machined

FC modelling wax for pressable ceramics

- Special wax for crowns and bridges in press technique and press-to-metal technique, burns out leaving no residue
- This high-quality modelling wax is specially formulated for the full ceramic sector

Product details					
Availability	Colour	Contents	Presentation	Qty	REF
FC modelling wax	navajowhite	70 g	tin	1	40103
FC modelling wax	grey	70 g	tin	1	40105



Modelling tip

As a general rule, adhere to the minimum ceramic wall thickness of 0.8 mm. If there is limited space availability, press with a layer thickness of 0.8 mm and then reduce the thickness of ceramic using a rotary instrument.

SecuPress Ring system

- For investing pressable ceramic restorations with Bellavest® SH, three different re-usable ring sizes are available. The markings facilitate optimal positioning and simplify the task of deflasking the restoration.

Product details	
Availability	REF
SecuPress Ring system for 100 g investment / 2 g ingots 100 g/12 mm	70050
SecuPress Ring system for 200 g investment / 2 g ingots 200 g/12 mm	70051
SecuPress Ring system for 300 g investment / 2 g ingots 300 g/12 mm	70053



Fully anatomical wax-up




Wax-up pattern cut-back technique



Sculpting wax FC, grey REF 40105


Rapid-Wax-System compatibel with Rapid Ringless System

- Time savings as compared to individual sprue system technique
- Secure position and dimensions
- Reliable sprue transitions
- Modelling wax that burns without residue

Product details					
Availability	Contents	Presentation	Qty	REF	
Direct wax sprues					
Ø 2.0 mm	250 pieces	pack	1	40654	
Ø 2.5 mm	250 pieces	pack	1	40655	
Ø 3.2 mm	250 pieces	pack	1	40656	
Ø 5.0 mm	100 pieces	pack	1	40652	
Ø 5.0 mm	250 pieces	pack	1	40653	
Wax button for Rapid-Ringless-System	100 pieces	pack	1	40657	

Rapid-Ringless-System compatible with BEGO Rapid wax system

- Time savings in relation to mould systems with foil sleeve, iron ring, etc.
- Compatible with Rapid-Wax-System Minimal wear, thus lower costs than with comparable systems
- Universally applicable for many casting systems Easy separation of mould and mould ring
- For all BEGO crown and bridge investment materials

Product details					
Availability		Presentation	Qty	REF	
Casting ring and base Size 1 x (Ø 37 mm/1 1/4")		set	1	52665	
Size 3 x (Ø 55 mm/2")		set	1	52666	
Size 6 x (Ø 72 mm/2 1/2")		set	1	52667	



Sprue with reservoir



Wax ball – funnel seal



Indirect wax sprue

BEGO modelling wax for prosthetics

- Sheets of pink standard wax for wax-ups of bases for full or partial dentures, partial denture saddles and occlusal registrations
- Easily shaped and modelled with minimal contraction
- Ideal strength for secure attachment of acrylic teeth
- The high solidification point of approx. 59 °C guarantees reliable trial insertion, enabling the wax to be used as set-up wax in the acrylic casting technique without becoming deformed
- Reliable quality management guarantees compatibility during trial insertion of the prepared prosthesis made of BEGO modelling wax, which is why our waxes carry the CE mark


Product details					
Availability	Colour	Contents	Presentation	Qty	REF
BEGO modelling wax, thickness 1.5 mm	pink	500 g	pack	1	40001
BEGO modelling wax, thickness 1.5 mm	pink	2.5 kg	pack	1	40007



CE


Isocera Separating liquid for the crown and bridge technique

- Isocera separates wax from the plaster model very effectively
- Highly suitable for insulating plaster dies when copings are created using the wax dipping technique

Product details					
Availability	Contents	Presentation	Qty	REF	
Isocera	200 ml	bottle	1	52705	

Plastic sticks and plastic hollow sticks for distribution channels

- Plastic sticks and hollow plastic sticks are used as a casting reservoir in the sprue technique for casting
- They stabilise the wax-up when using the lift-off technique for crowns and bridges, can be easily shaped over a flame, and burn out leaving no residue
- Hollow sticks are used in metal-ceramic work for non-precious alloys and alloys with a reduced precious metal content, especially in larger multi-unit constructions

Product details					
Availability	Contents	Presentation	Qty	REF	
Sticks, length 17 cm, Ø 2.5 mm ● (Cross section 1:1)	40 pieces	pack	1	52590	
Hollow sticks, length 16.5 cm, Ø 5 mm ○ (Cross section 1:1)	12 pieces	pack	1	52595	

Modelling tip

Before planned investment under pressure, the ends of the hollow sticks must be sealed very deeply with wax.

Aurofilm Wetting agent for investment and releasing the surface tension of silicone duplicating moulds

- Reliable preparation agent for investment in CoCr as well as crown and bridge work
- Aurofilm eliminates the water-repellent effects of the wax pattern ensuring smooth casting surfaces
- Aurofilm is also used successfully in the silicone duplication technique to reduce surface tension

Product details

Availability	Contents	Presentation	Qty	REF
Aurofilm	1 litre	bottle	1	52015
Aurofilm (spray bottle – for refilling)	100 ml	bottle	1	52019



Adapta deep-drawing system

- Simple and fast deep-drawing of copings
- Reasonably priced system which has been proven over many years with special plastic foils
- A uniform minimum wall thickness ensures a high level of stability in the copings
- Ideal for the double-crown technique; coated with milling wax, the Adapta coping offers a high level of protection against inadvertent milling through
- The thin 0.1 mm spacer foil, which is used as part of the system, frees up the necessary, defined space for the luting material

Product details

Availability	Contents	Presentation	Qty	REF
Adapta deep drawing system comprising: 1 Forming tub with Adapta mastic 1 Spare pack Adapta mastic 1 Foil holder 100 Adapta foils, 0.6 mm in foil dispenser 1 Pack, 100 Adapta foils, 0.6 mm 200 Adapta foils, 0.1 mm red, in foil dispenser		set	1	20500
Adapta deep drawing system intro set comprising: 1 Forming tub with Adapta mastic 1 Foil holder 50 Adapta foils, 0.6 mm 50 Spacer foils, 0.1 mm		set	1	20520

Availability	Contents	Presentation	Qty	REF
Adapta mastic (spare pack)		pack	1	20503
Forming tub with Adapta mastic, 1 Forming tub		piece	1	20504
Adapta foil holder		piece	1	20510
Adapta foil dispenser incl. 100 x 0.6 mm				20519
Adapta foil dispenser incl. 200 x 0.1 mm				20521
Adapta Spacer foils, 0.1 mm transparent	200 pieces	pack	1	20517
Adapta Spacer foils 0.1 mm red	200 pieces	pack	1	20502
Adapta foils 0.6 mm, transparent	100 pieces	pack	1	20501



Rapidi modelling knife

- The Rapidi modelling knife is ideal for cutting, scraping and modelling, easy-to-change blade

Product details

Availability	Contents	Presentation	Qty	REF
Rapidi modelling knife		piece	1	52270
Rapidi spare blades	40 pieces	set	1	52280





www.bego.com

BEGO Bremer Goldschlägerei Wilh. Herbst GmbH & Co. KG
Wilhelm-Herbst-Str. 1 · 28359 Bremen, Germany
Tel. +49 421 2028-0 · Fax +49 421 2028-100
E-mail info@bego.com · www.bego.com