

ACTIVA™ BioACTIVE

SMART™ Biomaterials for Today's Caries Management

RESTORATIVE

Dual-cure, injectable,
BioACTIVE restorative system

- Esthetic, BPA-free restorative
- Releases calcium, fluoride, and phosphate
- Versatile solution—from Class I to Class V, plus bulk-fill
- Treatment of choice for caries management

The SMART™ restorative for both doctor and patient



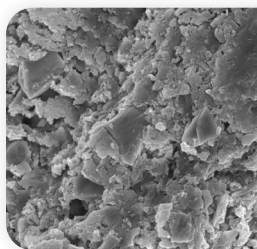
Moisture friendly for fewer complications

Ideal for Class V caries and
cases where moisture control
is difficult



A better Class II and bulk-fill

Significantly lower
shrinkage stress



Continuous defense against secondary caries

Releases calcium, fluoride, and
phosphate, supporting defense
against microleakage*



*ACTIVA™ BioACTIVE physically seals the margin of the material and tooth interface through apatite crystal formation, subsequently protecting against microleakage, the leading cause of secondary caries and recurrent decay.

SMART™ technologies inside ACTIVA™


WetBond™
Moisture-friendly
chemistry


ION-X™
Powers
bioactivity

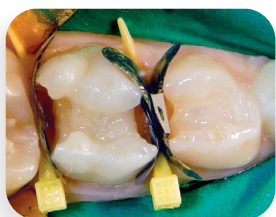

MODULUS™
Elastomeric strength
and resilience

SMART™ Materials = Versatile Solutions

The best bulk-fill with the lowest shrinkage stress

Case study: Fast, moist-field bulk placement in pediatric patient using ACTIVA™ KIDS BioACTIVE-RESTORATIVE™

Images courtesy Dr. Mark Cannon



Prepared teeth



Teeth restored with ACTIVA (pediatric shade)



Use ACTIVA KIDS for everyday pediatric cases!



Moisture friendly and ideal for Class Vs

Case study: Repairing sensitive cervical lesions

Images courtesy Dr. C. H. Pameijer



Cervical lesions



ACTIVA provides bioactivity and patient comfort

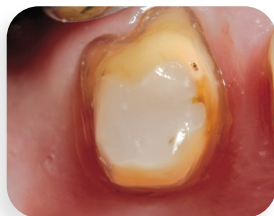
Bioactive advantage for core buildup

Core Buildup

Images courtesy Dr. Robert Lowe



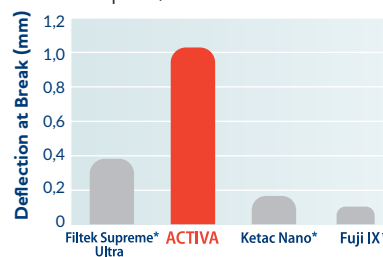
ACTIVA is used to build the core on a badly broken-down molar.



The tooth is ready to receive a crown.

Deflection at Break

A measure of toughness, flexion, stress absorption, and fracture reduction



*Not trademarks of Pulpdent Corporation

Ordering Information

Available from your preferred dental dealer

VR*	ACTIVA Starter Kit: 8 gm / 5 mL syringe, ACTIVA-SPENSER™ + 20 automix tips * Specify Shade: A1, A2, A3	\$216.00
VR1*	ACTIVA single: 8 gm / 5 mL syringe + 20 automix tips * Specify Shade: A1, A2, A3, A3.5	\$139.99
VR2*	ACTIVA Value Refill: 16 gm (2 x 8 gm / 5 mL syringes) + 40 automix tips * Specify Shade: A1, A2, A3, A3.5	\$259.99

VKP	ACTIVA KIDS Starter Kit: 8 gm / 5 mL syringe, opaque white shade, ACTIVA-SPENSER + 20 automix tips	\$216.00
VK1P	ACTIVA KIDS single: 8 gm / 5 mL syringe, opaque white shade, + 20 automix tips	\$139.99
VK2P	ACTIVA KIDS Value Refill: 16 gm (2 x 8 gm / 5 mL syringes), opaque white shade + 40 automix tips	\$259.99

Ask about our new user special!

XF-VR-SMART-01
REV: 01/17/2024

For more information,
email sales@pulpdent.com or visit pulpdent.com

PULPDENT
80 Oakland Street
Watertown, MA 02472 • USA

