



ZenFlex™

NiTi Rotary Shaping File System

Maximum Strength. Minimally Invasive.

Featuring an ideal balance of strength and flexibility, ZenFlex lets you reach the full working length with reduced risk of breakage while preserving more tooth integrity.



High Cutting Efficiency

Designed with triangular cross section with proprietary heat treatment, ZenFlex exhibits high cutting efficiency that lets you reach the full working length of even complex root geometries.



Minimally Invasive

A maximum flute diameter of 1mm and a non-cutting tip work together to minimize transportation and preserve the tooth's structural integrity.



Exceptional Strength

Resists torsional stress and cyclic fatigue resulting in minimal breakage and reduced transportation.



Excellent Flexibility

Proprietary heat-treatment design delivers excellent controlled memory and flexibility for up to 90° curves.



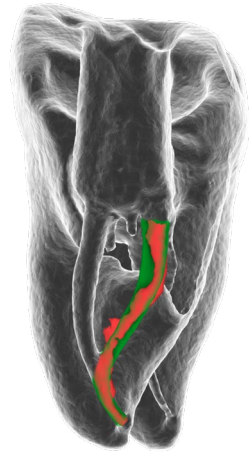
Corresponding ZenFlex Gutta Percha Points

Choose the corresponding size and taper to meet the needs of each root canal procedure.

Follow the Curvature. See the Difference.

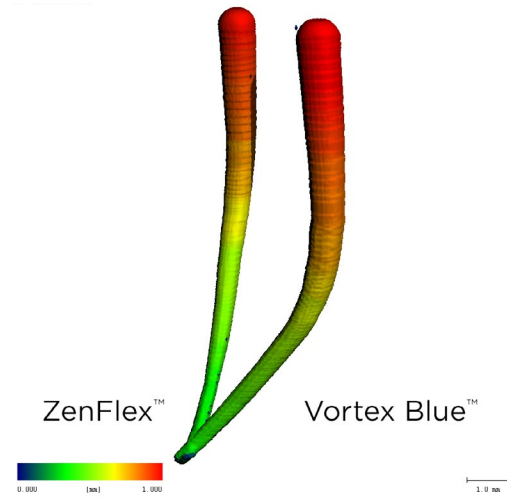
We invited leading endodontist Dr. Stephen Buchanan to put ZenFlex to the test. Dr. Buchanan found that ZenFlex is able to shape severely curved canals.

He also found that ZenFlex is able to maintain more tooth structure after RCT, due to its 1mm maximum flute diameter.



● Pre-Op Canal ● Shaped Canal

*CT scans taken from extracted teeth.



ZenFlex From the Professionals' Perspective.

“ ZenFlex shaping instruments have variable-pitch flute angles that prevent them from threading into canals, provide them with enormous chip space between flutes, and help prevent tip breakage. These sophisticated instruments deliver single-file shapes without transporting canals due to their variable-heat treatment. Customizing heat treatment for each file size produces smaller files with more shape memory to prevent unwinding and larger files with remarkable ductility. It also has a 1mm maximum flute diameter in order to better maintain the structural integrity of teeth after RCT, and Kerr's AutoFit gutta percha points fit well to the ends of canal shapes cut by ZenFlex Files. ”



- Dr. Stephen Buchanan

“ The ZenFlex Rotary Files cuts smoothly and efficiently reaching working length in reduced time. ”



- Dr. Bernice Ko

“ I really like the control memory of ZenFlex. It's one of my favorite features about the file. I have had three cases recently where I wish I could have used the ZenFlex file on because of the severe “S” shaped curvatures of the roots. ”

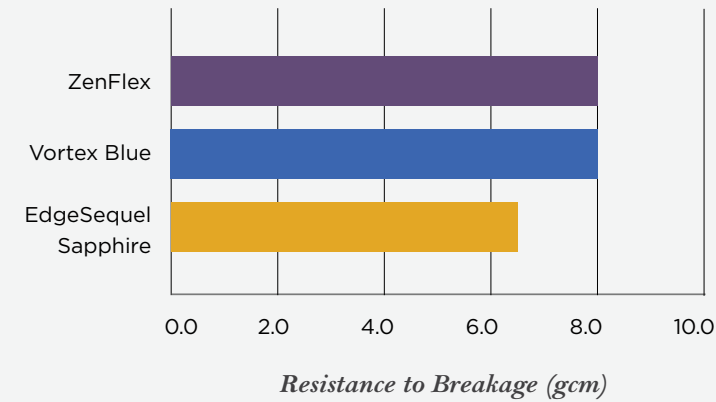
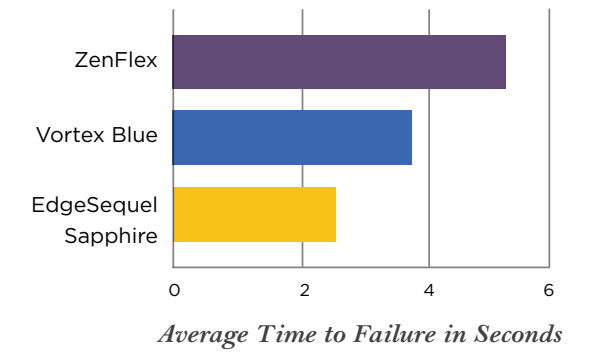


- Dr. Matthew Miller

Dr. Ko, Dr. Buchanan, and Dr. Miller are paid consultants of Kerr.

When Failure is Not an Option.

Compared to other brands, ZenFlex delivers greater resistance to cyclic fatigue. This results in longer time to failure and shorter time to reach the working length while minimizing the risk of breakage and transportation.



Torque Strength.

ZenFlex is designed to be as resistant or more resistant to torsional stresses relative to major rotary file competitors despite having a 20% smaller maximum flute diameter and smaller mass.

● ZenFlex
● Vortex Blue



Flexibility Meets Memory.

Every canal anatomy is different, and some are more complex than others. Designed with proprietary heat-treatment technology, ZenFlex provides excellent flexibility for up to 90° curves.

With exceptional controlled memory, ZenFlex maintains its pre-curved shape, resulting in easier insertion into even the most challenging canal anatomies.



Gutta Percha Points.

Use your ZenFlex confidently and precisely. ZenFlex Gutta Percha Points match with canals shaped by ZenFlex NiTi Files.

Data on File.

ZenFlex Adapts to Your Needs.

With a wide selection of tip and taper configurations.

Ordering Information

ZENFLEX NITI SHAPING FILES PACK OF 6

Taper	Tip	21mm	25mm	31mm
.04	20	818-1201	818-1202	818-1203
	25	818-1251	818-1252	818-1253
	30	818-1301	818-1302	818-1303
	35	818-1351	818-1352	818-1353
	40	818-1401	818-1402	818-1403
	45	818-1451	818-1452	818-1453
	50	818-1501	818-1502	818-1503
	55	818-1551	818-1552	818-1553
.06	20	818-2201	818-2202	818-2203
	25	818-2251	818-2252	818-2253
	30	818-2301	818-2302	818-2303
	35	818-2351	818-2352	818-2353
	40	818-2401	818-2402	818-2403
	45	818-2451	818-2452	818-2453
	50	818-2501	818-2502	818-2503
	55	818-2551	818-2552	818-2553

GUTTA PERCHA POINTS PACK OF 50

Taper	Tip	30mm
.04	20	825-9420
	25	825-9425
	30	825-9430
	35	825-9435
	40	825-9440
.06	45	825-9445
	20	825-9620
	25	825-9625
	30	825-9630
	35	825-9635
	40	825-9640
	45	825-9645

ZENFLEX NITI SHAPING FILES ASSORTED PACK OF 6

Taper	Tip							21mm	25mm
.04	20	25	30	35	40	45	818-0421	818-0425	
.06	20	25	30	35	40	45	818-0621	818-0625	

GUTTA PERCHA POINTS ASSORTED PACK OF 60

Taper	Tip							30mm
.04	20	25	30	35	40	45	825-9400	
.06	20	25	30	35	40	45	825-9600	



For added flexibility and control, ZenFlex works with your preferred endodontic motor and handpieces.